

# ALAN DONAKER SURVEYING

**Alan Donaker, P.S.**

**19849 TR 383**

**Walhonding, OH 43843**

Fax: (740) 327-1083

Phone: (740) 327-7001

Being 23.538 acres, more or less, 8.619 acres in Section 3, 6.493 acres in Section 4, 8.119 acres in Lot 11 and 0.307 acres in Lot 12, in the Second Quarter of Township 3 North, Range 8 West, United States Military Lands, in Township of Cass, in the County of Muskingum, in the State of Ohio, conveyed to Kenneth Moore, Jr., DR 1032-567 (part), Parcel No. 10-04-04-23-000 (part, 6.493 acres), Parcel No. 10-04-03-04-000 (part, 8.619 acres), Parcel No. 10-08-51-18-000 (part, 8.119 acres) and Parcel No. 10-08-51-19-000 (all, 0.307 acres) and more particularly described as follows:

Commencing at a ½" rebar found at the Northwest corner of the South ½ of Section 3;

thence, with the West line of Section 3, S. 04° 26' 00" E. a distance of 1247.26' to a point on the South line of the Limited Access line of State Road 16 (Musk-16-7.16), said point being the TRUE POINT OF BEGINNING:

thence, with the South line of the Limited Access line of State Road 16 (Musk-16-7.16), the following 9 courses:

1. thence, N. 78° 07' 04" E. a distance of 873.41' to a ⅝" rebar set;
2. thence, N. 76° 17' 44" E. a distance of 422.34' to a ⅝" rebar set;
3. thence, N. 85° 12' 00" E. a distance of 190.76' to a ⅝" rebar set;
4. thence, N. 76° 10' 28" E. a distance of 592.17' to a ¾" pipe found;
5. thence, N. 66° 35' 23" E. a distance of 608.41' to a ¾" pipe found;
6. thence, N. 83° 33' 51" E. a distance of 300.29' to a ⅝" rebar set;
7. thence, N. 52° 58' 37" E. a distance of 669.90' to a ⅝" rebar set;
8. thence, N. 86° 09' 49" E. a distance of 311.18' to a ¾" pipe found;
9. thence, N. 47° 20' 23" E. a distance of 218.90' to a ⅝" rebar set;

thence, with the property line of Dana Lewis aka Dana J. Lewis, DR 1073-287, S. 11° 18' 42" E. a distance of 398.75' to a ⅝" rebar found on the North line of Raiders Road;

thence, with the North line of Raiders Road, the following 10 courses:

1. thence, S. 74° 48' 56" W. a distance of 499.68' to a concrete monument found;
2. thence, S. 15° 11' 04" E. a distance of 20.00' to a concrete monument found;
3. thence, S. 74° 48' 56" W. a distance of 2593.96' to a concrete monument found;
4. thence, S. 15° 11' 04" E. a distance of 5.00' to a concrete monument found;
5. thence, S. 74° 48' 56" W. a distance of 399.76' to a concrete monument found;
6. thence, S. 15° 11' 04" E. a distance of 5.00' to a concrete monument found;
7. thence, S. 74° 48' 56" W. a distance of 589.02' to a concrete monument found;
8. thence, N. 15° 11' 04" W. a distance of 10.00' to a concrete monument found;
9. thence, with a curve to the right, the curve data for which is: D = 06° 28' 16", R = 5729.58', L = 647.10', Ch. B. S. 78° 04' 25" W., Ch. L. 646.76' to a ⅝" rebar set;
10. thence, S. 81° 19' 56" W. a distance of 627.70' to a ⅝" rebar set;

thence, with the property line of Kenneth W. III and Annette Moore, DR 1136-642, N. 04° 34' 56" W. a distance of 174.23' to a ⅝" rebar set on the South line of the Limited Access line of State Road 16 (Musk-16-7.16);

thence, with the South line of the Limited Access line of State Road 16 (Musk-16-7.16), the following 3 courses:

1. thence, N. 71° 45' 55" E. a distance of 607.09' to a 5/8" rebar set;
2. thence, N. 89° 19' 12" E. a distance of 396.23' to a 5/8" rebar set;
3. thence, N. 78° 07' 04" E. a distance of 263.38' to the TRUE POINT OF BEGINNING, containing 23.538 acres, more or less, and is subject to all easements, rights-of-way, or restrictions, whether recorded or implied.

Bearings are based on DR 1137-423 and are for angular calculations only.

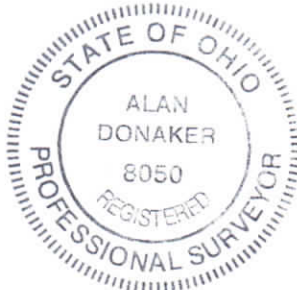
All 5/8" rebars set are 30" long with plastic cap marked "AMD 8050".

Pertinent Documents: Tax Map and all Deeds and Plats shown, Mus-16-7.16

Surveys by: Earl R. Donaker, W.J. Biedenbach, Malcolm A. Grove, Richard Max Graves, Alan Donaker

Description and plat by Alan Donaker, Professional Surveyor, #8050, from a survey of the premises on May 21, in the year of our Lord Two Thousand Thirteen.

*Alan Donaker 5/21/13*  
**OFFICE COPY  
NOT RECORDABLE**



DESCRIPTION  
APPROVED  
By: *[Signature]* 5/21/2013

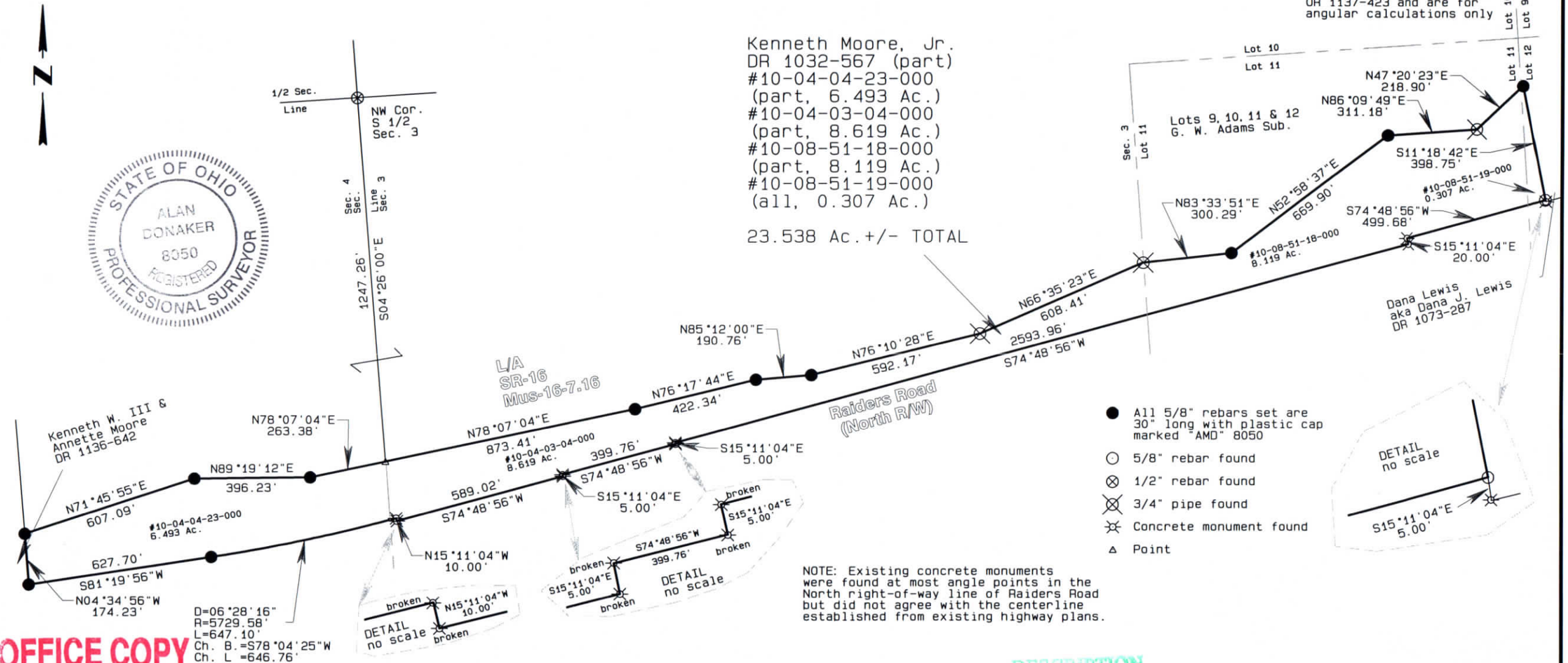
This property is subject to all easements, rights-of-way or restrictions, whether recorded or implied.

ALAN DONAKER SURVEYING  
19849 TR 383  
Walhonding, OH 43843  
Telephone: (740) 327-7001  
Fax: (740) 327-1083

Pertinent Documents: Tax Map  
All Deeds and Plats Shown  
Mus-16-7.16

Surveys by: Earl R. Donaker,  
W. J. Biedenbach, Malcolm A.  
Grove, Richard Max Graves,  
Alan Donaker

Bearings are based on  
OR 1137-423 and are for  
angular calculations only

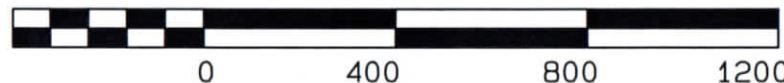


OFFICE COPY  
NOT RECORDABLE

I, Alan Donaker, P.S. 8050, hereby certify this plat to represent a boundary survey pursuant to Chapter 4733.37 Ohio Administrative Code and to be correct to the best of my knowledge and belief.

GRAPHIC SCALE

1"=400'



DESCRIPTION  
APPROVED  
By: [Signature] 5/11/2016

Kenneth Moore, Jr.  
DR 1032-567  
23.538 Ac. +/-  
Secs. 3 & 4, Lots 11 & 12  
2nd. Qtr., T3N, R8W  
United States Military Lands  
Cass Township  
Muskingum County, Ohio  
May 21, 2013