

13-60-14-12 SNR

ADDRESS N/A

Being a part of 2 tracts conveyed to Arden T. Pennington and Mada Pennington by Deed Volume 424 page 39 and Deed Volume 802 page 131 of the Muskingum County Deed Records, in the North west Quarter of Section 14, Township 14, Range 14, Muskingum County, Ohio and being further described as follows:

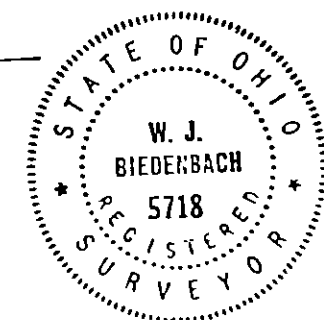
Commencing at the Southeast Corner of the Northwest Quarter of Section 14; thence North 01 degree 02 minutes 11 seconds East 561.90 feet to a point; thence North 88 degrees 57 minutes 49 seconds West 342.86 feet to a point in the center of East Athens Road (County Road number 87), said point being the place of beginning of this tract; thence along the center of said East Athens Road the next 11 courses and distances:

- 1) North 62 degrees 32 minutes 30 seconds West 75.05 feet to a point;
- 2) North 65 degrees 34 minutes 14 seconds West 95.27 feet to a point;
- 3) North 66 degrees 29 minutes 40 seconds West 98.01 feet to a point;
- 4) North 67 degrees 19 minutes 17 seconds West 98.90 feet to a point;
- 5) North 67 degrees 27 minutes 28 seconds West 94.07 feet to a point;
- 6) North 72 degrees 00 minutes 47 seconds West 95.73 feet to a point;
- 7) North 79 degrees 08 minutes 33 seconds West 63.29 feet to a point, said point being North 01 degree 59 minutes 39 seconds East 25.81 feet from a point marked by an existing 5/8 inch rebar;
- 8) North 82 degrees 38 minutes 32 seconds West 249.35 feet to a point, said point being North 11 degrees 43 minutes 08 seconds East 39.63 feet from a point marked by an existing 5/8 inch rebar;
- 9) North 82 degrees 55 minutes 01 seconds West 276.05 feet to a point;
- 10) North 55 degrees 22 minutes 03 seconds West 101.65 feet to a point;
- 11) North 57 degrees 17 minutes 54 seconds West 144.91 feet to a point, said point being North 29 degrees 57 minutes 10 seconds East 21.0 feet from a point marked by an existing 5/8 inch rebar; thence leaving said center of East Athens Road (County Road number 87) South 29 degrees 57 minutes 10 seconds West 2.54 feet to a point, said point being 18.46 feet from a point marked by an existing 5/8 inch rebar; thence North 23 degrees 18 minutes 06 seconds West 194.75 feet to a point marked by an existing 1/2 inch rod, said point being the Southwest Corner of a tract conveyed to Ronald D. Supplee by Deed Volume 712 page 290 of the Muskingum County Deed Records; thence North 73 degrees 13 minutes 54 seconds East 178.00 feet to a point marked by a 5/8 inch rebar set; thence North 05 degrees 08 minutes 31 seconds West 107.00 feet to a point marked by a 5/8 inch rebar set; thence North 05 degrees 43 minutes 53 seconds West 111.11 feet to a point marked by a 5/8 inch rebar set; thence North 15 degrees 22 minutes 36 seconds East 76.56 feet to a point marked by a 5/8 inch rebar set; thence North 52 degrees 06 minutes 16 seconds West 304.91 feet to a point marked by a 5/8 inch rebar set, said point being the Northeast Corner of a tract conveyed to C. and G. Rhoads recorded in Deed Volume 489 page 131 of the Muskingum County Deed Records; thence South 89 degrees 39 minutes 37 seconds East 1464.44 feet to a point marked by a 5/8 inch rebar set; thence South 00 degrees 43 minutes 11 seconds West 1128.45 feet to the place of beginning, passing a point marked by an iron pin at 1098.45 feet.

Containing 27.204 acres more or less, subject to all legal road right-of-way.

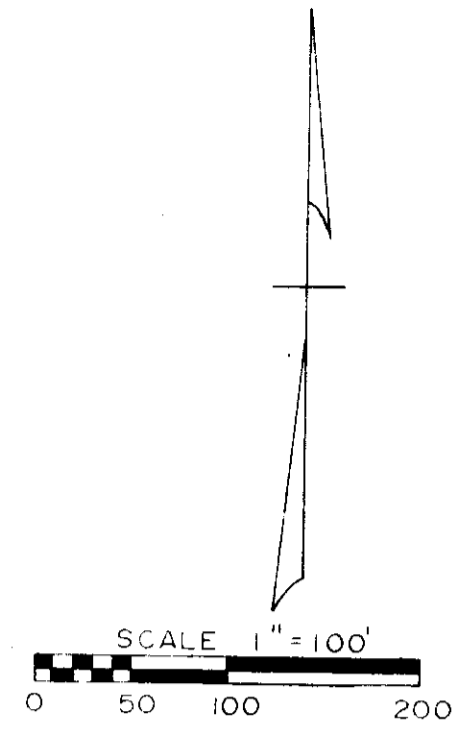
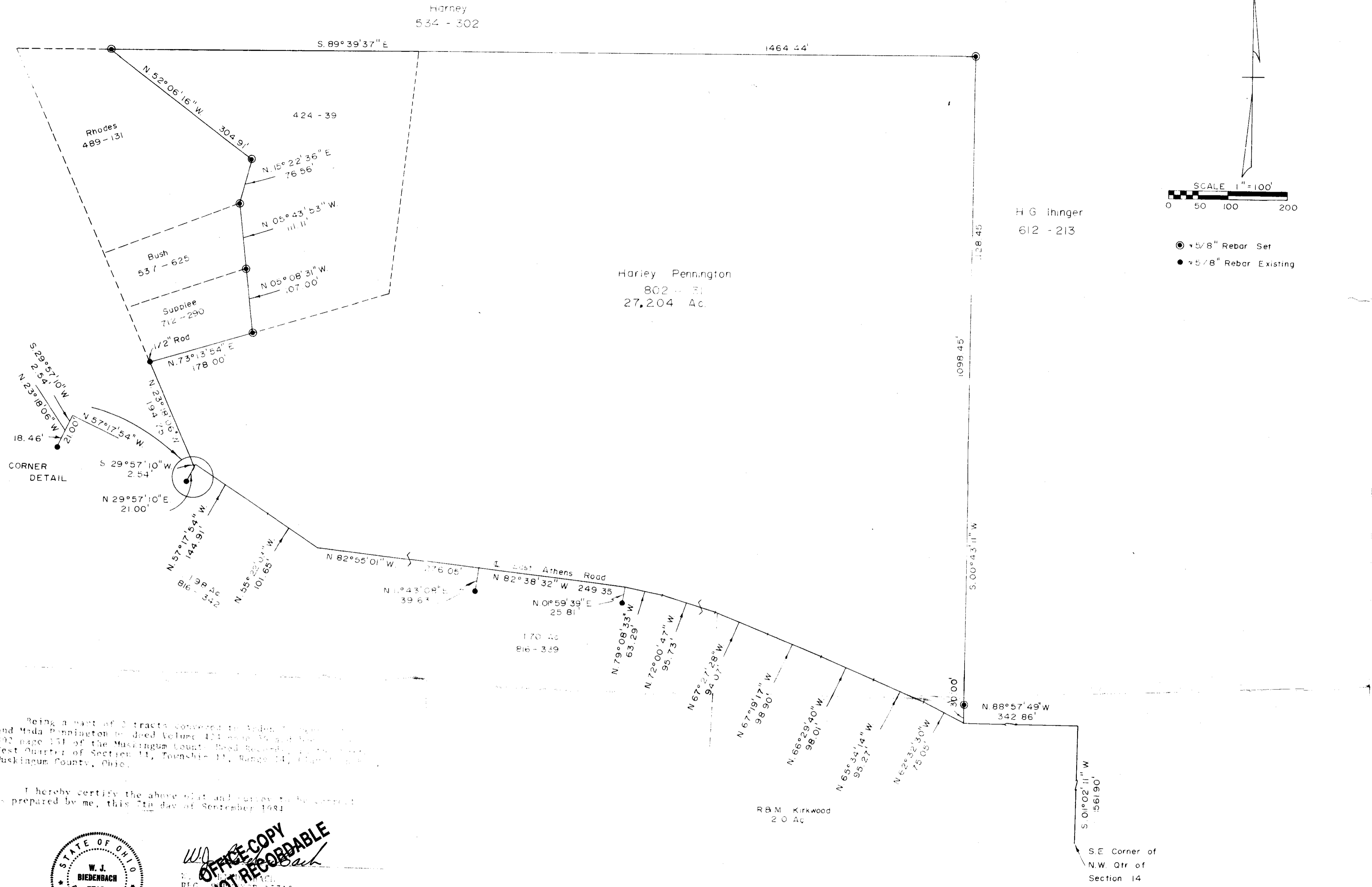
I hereby certify the above description to be correct as prepared by me, this 7th day of September 1984.

W. J. BIEDENBACH
REG. SURVEYOR #5718



L. H. HUFFMAN
1881-8-84

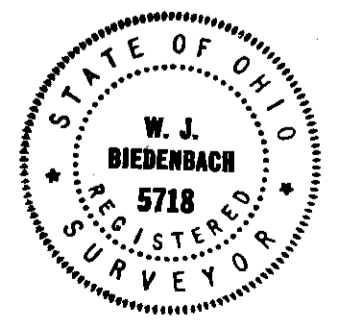
OFFICE COPY
NOT RECORDED



● 5/8" Rebar Set
 ● 5/8" Rebar Existing

Being a part of 2 tracts conveyed to John Pennington and Mada Pennington by deed Volume 111 page 54 and 55, 802 page 151 of the Muskingum County Deed Record, the West Quarter of Section 14, Township 11, Range 14, Muskingum County, Ohio.

I hereby certify the above plat and survey to be correct as prepared by me, this 27th day of September 1984



**OFFICE COPY
NOT RECORDABLE**

W. J. BIEDENBACH & ASSOC.
 Surveying & Mapping
 3120 Lisa Ln - Zanesville, Ohio 43701
 (614) 453-4850

Drawn by *AB* Date 8-30-84
 Scale 1" = 100' Checked by