

DESCRIPTION

APPROVED

By: A.C. Swinehart  
6-8-2016 *CS*

17-79-01-01-001



**Linn Engineering, Inc.**

*Civil Engineering Consultants*

740-452-7434 • 1-800-991-7434

534 Market Street • P.O. Box 2086 • Zanesville, Ohio 43702-2086

**Zanesville Board of Education**

**DR 876-193 Tract II**

**+/- 1.660 ac.**

Situated in the Township of Falls, County of Muskingum, State of Ohio, bounded and described as follows:

Being a part of Lots 1 and 2 of Edmund J. Brush Subdivision as the same is designated and delineated on Muskingum County Plat Book 1, Page 203 (Re-plat Book 1, Page 208) and being a part of lands now owned by Zanesville Board of Education as recorded in Muskingum County Deed Record 876, Page 193 Tract II, and being more particularly described as follows:

Beginning at an axle found on the southeast corner of Lot 2 of said Brush Subdivision;

thence along the south line of said Lot 2 South 61 degrees 52 minutes 27 seconds West 238.00 feet to a point in the center of Joe's Run;

thence along the center of Joe's Run and the meanderings thereof the following six courses:

- 1) North 25 degrees 08 minutes 44 seconds West 196.64 feet;
- 2) North 22 degrees 49 minutes 43 seconds West 128.05 feet;
- 3) North 32 degrees 26 minutes 12 seconds West 166.22 feet;
- 4) North 30 degrees 38 minutes 53 seconds West 24.14 feet;
- 5) North 12 degrees 59 minutes 44 seconds West 100.03 feet;
- 6) North 12 degrees 59 minutes 47 seconds West 111.67 feet to a point on the north line of said Lot 1 and on the line common to the City of Zanesville and Falls Township, from which an iron pin found bears South 61 degrees 52 minutes 27 seconds West 44.16 feet;

thence along said north line and the line common to the City of Zanesville and Falls Township North 61 degrees 52 minutes 27 seconds East 12.97 feet to the southwest corner of Woodside Subdivision as the same is designated and delineated on Muskingum County Plat Book 1, Page 296 (Re-plat Book 1, Page 265);

thence continuing along said lines North 61 degrees 52 minutes 27 seconds East 63.56 feet, from which an axle found bears North 61 degrees 52 minutes 27 seconds East 66.09 feet;

thence through said Board of Education lands the following eleven courses:

- 1) South 06 degrees 45 minutes 28 seconds West 28.58 feet;
- 2) South 18 degrees 20 minutes 41 seconds East 163.17 feet;
- 3) South 06 degrees 37 minutes 52 seconds East 30.14 feet;

DESCRIPTION

APPROVED

By: A.L. Swinehart  
6-8-2016 CLJ

17-79-01-01-001 A

- 4) South 21 degrees 14 minutes 42 seconds East 84.88 feet;
- 5) South 36 degrees 40 minutes 50 seconds East 90.59 feet;
- 6) South 23 degrees 54 minutes 01 seconds East 58.82 feet;
- 7) South 33 degrees 46 minutes 09 seconds East 54.95 feet;
- 8) South 21 degrees 34 minutes 42 seconds East 43.54 feet;
- 9) South 82 degrees 53 minutes 43 seconds East 130.89 feet;
- 10) North 88 degrees 50 minutes 22 seconds East 53.71 feet;
- 11) North 64 degrees 19 minutes 27 seconds East 23.89 feet to a point the east line of said Lot 2 and the west line of lands now owned by Zanesville Board of Education (DR 876-193 Tract I) and the line common to the City of Zanesville and Falls Township;

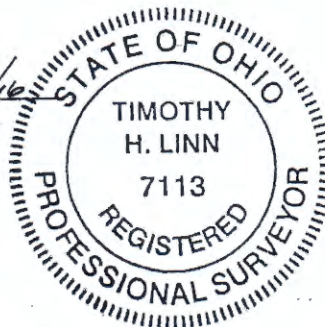
thence along the aforementioned lines South 09 degrees 24 minutes 45 seconds East 78.64 feet to the place of beginning, containing 1.660 acres, more or less, subject to all legal road right of ways and applicable easements, written or implied.

Bearings are based on Ohio State Plane Coordinate System, NAD 83, South Zone, Grid South, as per GPS observations made on June 26, 2015.

This description is written based on a survey completed May 17, 2016 by Timothy H. Linn, Reg. No. 7113.

**OFFICE COPY**  
**NOT RECORDABLE**  
Timothy H. Linn  
Reg. No. 7113

5/18/16  
Date



PARCEL NO.:

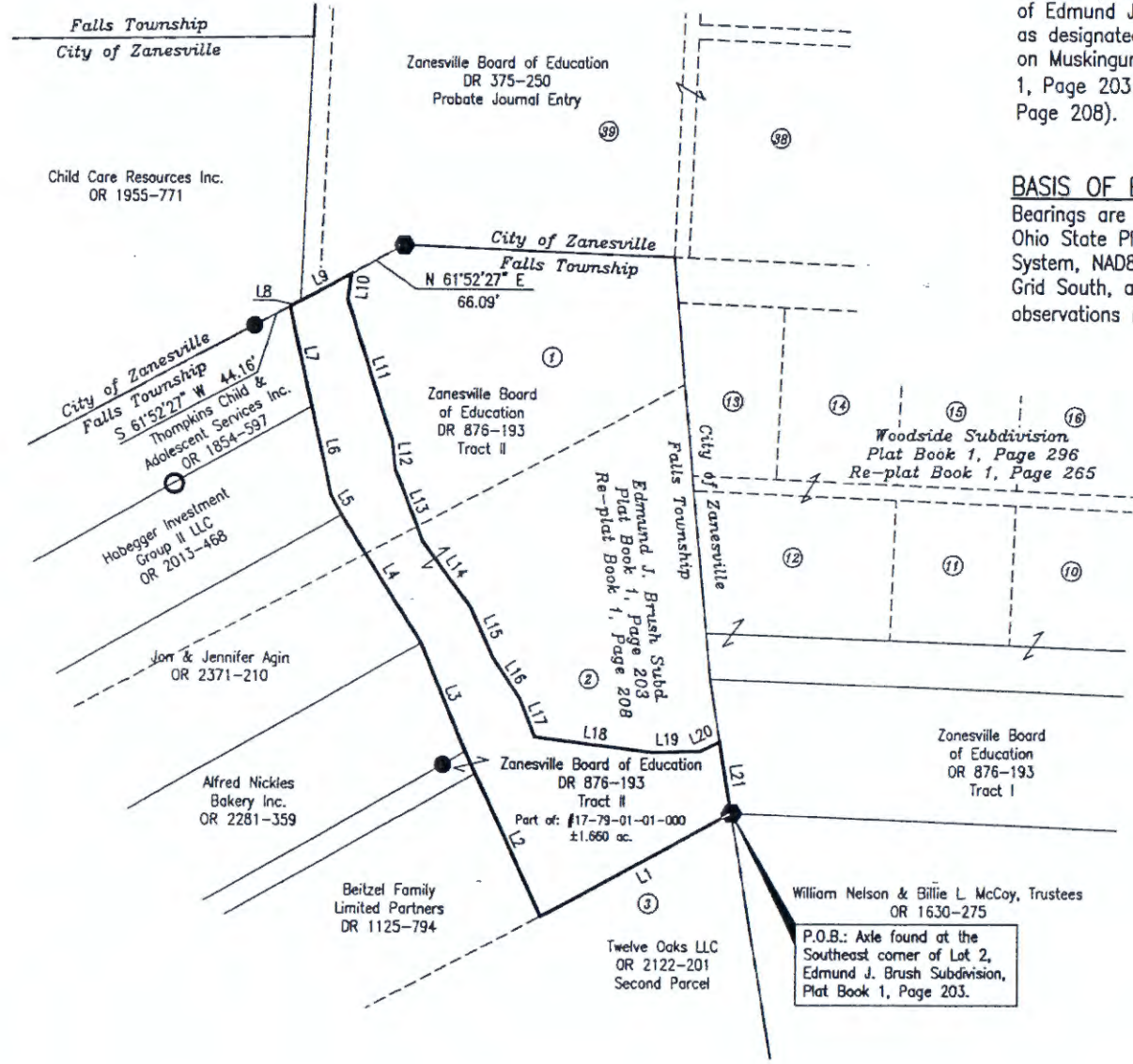
Part of: 17-79-01-01-000 (1.660 ac.)

DESCRIPTION

APPROVED

By: [Signature] 6/8/2016





**SITUATED IN**  
 Being a part of Lots 1 and 2 of Edmund J. Brush Subdivision as designated and delineated on Muskingum County Plat Book 1, Page 203 (Re-plat Book 1, Page 208).

**REFERENCES**  
 As shown on Plat.

**PARCEL NO.**  
 Part of: 17-79-01-01-000 (±1.660 ac.)

**BASIS OF BEARING**  
 Bearings are based on the Ohio State Plane Coordinate System, NAD83, South Zone, Grid South, as per GPS observations made 6/26/15.

**LEGEND**  
 ○ Pipe Found  
 ● Iron Pin Found, 5/8" rebar  
 ● Axle Found  
 P.O.B. Place of Beginning

LINE	BEARING	DISTANCE
L1	S 61°52'27" W	238.00'
L2	N 25°08'44" W	196.64'
L3	N 22°49'43" W	128.05'
L4	N 32°26'12" W	166.22'
L5	N 30°38'53" W	24.14'
L6	N 12°59'44" W	100.03'
L7	N 12°59'47" W	111.67'
L8	N 61°52'27" E	12.97'
L9	N 61°52'27" E	63.56'
L10	S 06°45'28" W	28.58'
L11	S 18°20'41" E	163.17'
L12	S 06°37'52" E	30.14'
L13	S 21°14'42" E	84.88'
L14	S 36°40'50" E	90.59'
L15	S 23°54'01" E	58.82'
L16	S 33°46'09" E	54.95'
L17	S 21°34'42" E	43.54'
L18	S 82°53'43" E	130.89'
L19	N 88°50'22" E	53.71'
L20	N 64°19'27" E	23.89'
L21	S 09°24'45" E	78.64'

**DESCRIPTION APPROVED**  
 By: *[Signature]* 5/18/16



**OFFICE COPY NOT RECORDABLE**  
 Timothy H. Linn, Reg. Surveyor No. 7113  
 Date: 5/18/16



**Linn Engineering, Inc.** 740-452-7434  
 Civil Engineering Consultants  
 P.O. Box 2086 Zanesville, Ohio 43702-2086