

BEING A PARCEL OF LAND LOCATED IN SECTION
SECTION N² 18 & 19, AND FRACTIONAL SECTIONS 17 &
20, TOWN N² 12, RANGE N² 12, HARRISON TWP,
MUSKINGUM CO. OHIO.

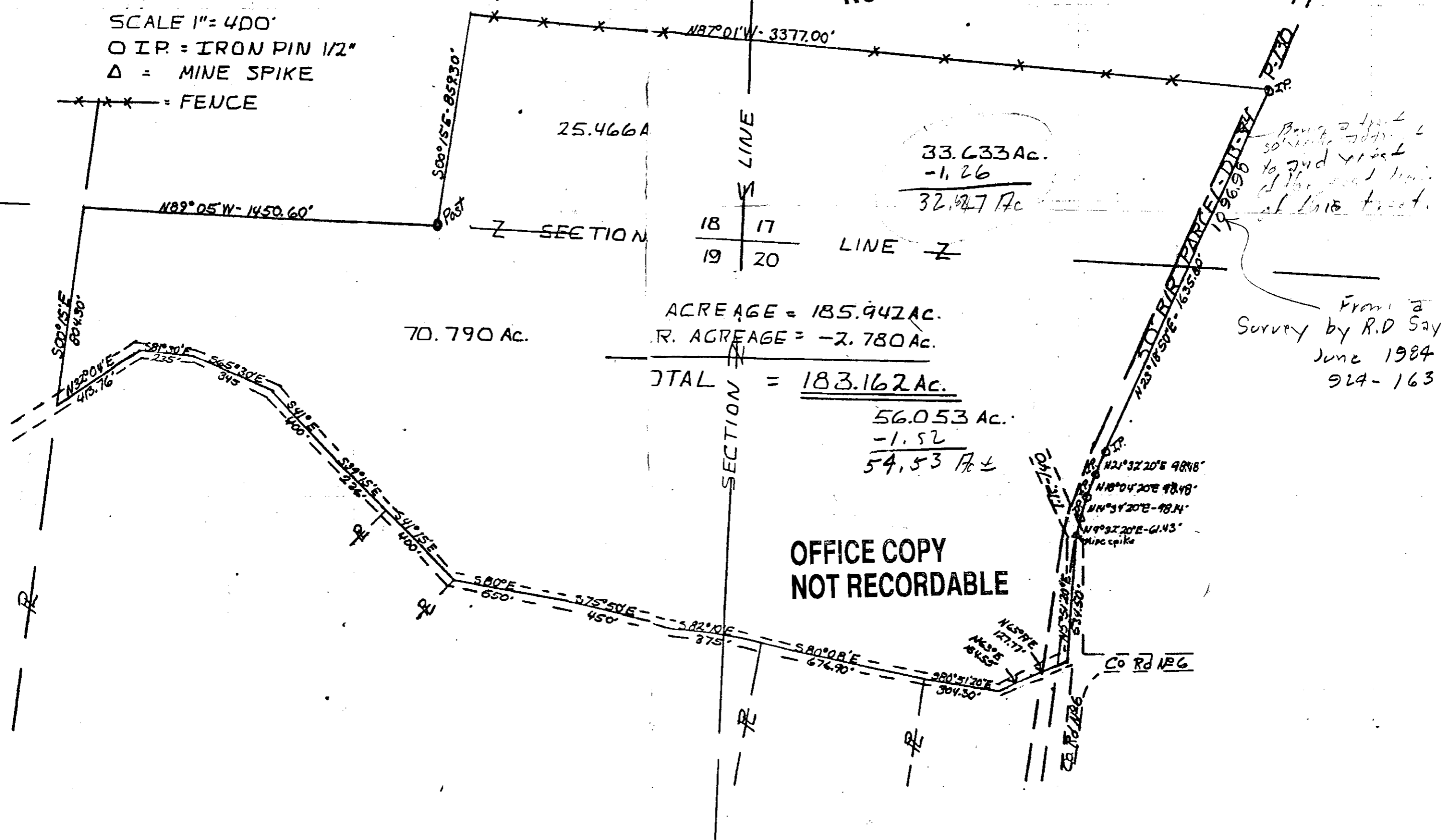
SURVEYED JAN 1985
BY-ROBERTA A. JAMES

20-60-19-01
20-60-20-01
20-60-17-28
20-60-18-16

Robert A. James
**OFFICE COPY
NOT RECORDABLE**

SCALE 1" = 400'
O.I.P. = IRON PIN 1/2"
Δ = MINE SPIKE

*** = FENCE



**OFFICE COPY
NOT RECORDABLE**

N21°32'20"E 98.18'
N18°04'20"E 98.18'
N11°31'20"E 98.14'
N9°32'20"E 61.43'
MINE SPIKE

Co Rd 126