

BOWMAN SURVEYING
1340 LINDEN AVENUE
ZANESVILLE, OHIO
PH./FAX (740) 454-0496

**SURVEY DESCRIPTION
FOR
Joab Rowland**

PART OF AUDITORS PARCELS
20-60-19-03-000 (2.07 Acres)
20-60-19-04-000 (1.47 Acres)

Situated in the Northwest Quarter of Section 19, T-12, R-12, Harrison Township, Muskingum County, Ohio.

Commencing at the Northeast corner of the Northwest quarter of section 19; thence, S.00°09'22"W. a distance of 944.36 feet along the East line of said quarter section to a point in the center of Virginia Ridge Road, passing a found stone at 631.14', and being referenced by a found iron pin bearing S.00°09'22"W. a distance of 29.72 feet; thence on a curve to the right an arc distance of 117.82', on a radius of 481.28', whose chord bears S.54°06'36"W. a distance of 117.53 feet along center line of said road to a point; thence, S.61°07'13"W. a distance of 57.76 feet along the center of said road to a point, BEING THE POINT OF BEGINNING;

Thence, S.61°07'13"W. a distance of 307.67 feet along the center of said road to a point;

Thence, on a curve to the right an arc distance of 186.19 feet, on a radius of 1086.77 feet, whose chord bears S.66°01'46"W. a distance of 185.97 feet along the center of said road to a point;

Thence, S.70°56'12"W. a distance of 204.81 feet along the center of said road to a point;

Thence, S.69°49'57"W. a distance of 386.84 feet along the center of said road to a point;

Thence, N.19°34'14"E. a distance of 242.78 feet through the lands of J. & S. Rowland (1798/810) to a set rebar, passing a set rebar at 29.12';

Thence, N.31°53'24"E. a distance of 130.49 feet through said Rowland lands to a set rebar;

Thence, S.66°51'26"E. a distance of 221.98 feet through said Rowland lands to a set rebar;

Thence, N.62°33'08"E. a distance of 378.48 feet through said Rowland lands to a set rebar;

Thence, N.66°16'30"E. a distance of 182.23 feet through said Rowland lands to a set rebar;

Thence, S.61°25'33"E. a distance of 159.22 feet through said Rowland lands to the point of beginning, passing a set rebar at 124.45'.

The above described parcel contains 3.54 Acres, more or less, subject to all legal easements and right of ways. All set rebars are 5/8" x 30" rebars with plastic I.D. caps. North is based upon an assumed meridian.

Description was prepared from an actual survey by Bowman Surveying, Stephen M. Bowman, P.S.#7135. August 29, 2008.

APPROVED
MINOR LOT SPLIT ONLY
MUSKINGUM COUNTY
PLANNING COMMISSION DIRECTOR
[Signature]
9/16/08
Date Fee Paid



DESCRIPTION
APPROVED
By *[Signature]* 9/10/2008

OFFICE COPY
NOT RECORDABLE
[Signature]

NORTH IS BASED UPON
AN ASSUMED MERIDIAN
SCALE 1" = 200'



Approved 100' Transfer
On-Lot Sewage O.K.
Date 9/15/08
Zanesville - Muskingum Co.
Health Department

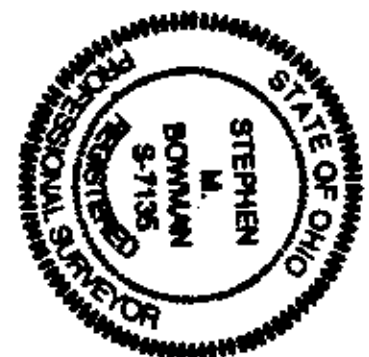
SURVEY PLAT FOR JOAB ROWLAND
SITUATED IN THE NORTHWEST QUARTER OF SECTION 19, T-12, R-12, HARRISON
TOWNSHIP, MUSKINGUM COUNTY, OHIO.

PART OF AUDITORS PARCELS

20-60-19-03-000 (2.07 ACRES)
20-60-19-04-000 (1.47 ACRES)

DESCRIPTION
APPROVED
9/15/08

C/L
VIRGINIA RIDGE RD.



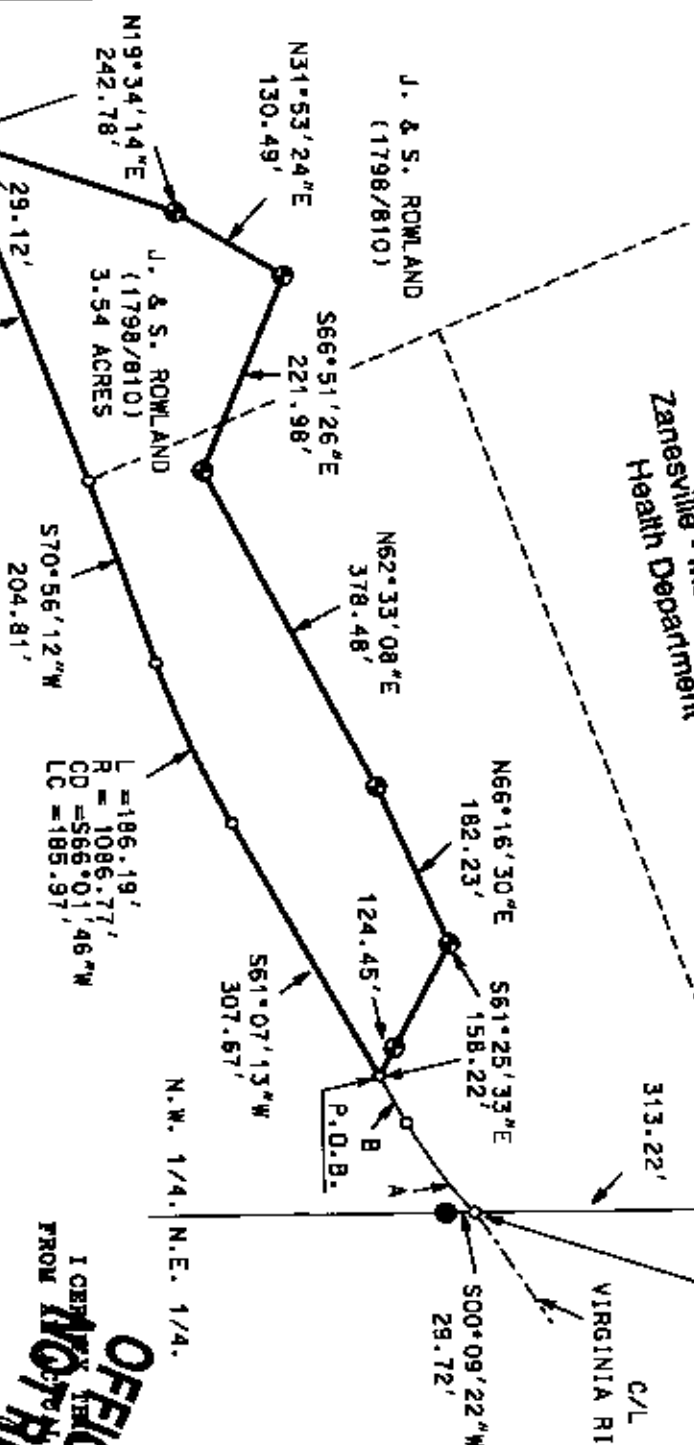
OFFICE COPY
I CERTIFY THE SURVEY WAS PREPARED
FROM THE RECORD COPY I CONDUCTED

STEPHEN M. BOWMAN P.S. #7135

BOWMAN SURVEYING
1340 LINDEN AVENUE
ZANESVILLE, OHIO 43701
PHONE/FAX 740-454-0496

A
L = 117.82'
R = 481.28'
CD = 554.06', 36"W
LC = 117.53'
B
S61°07'13"W
57.76'

- LEGEND**
- IRON PIN FOUND
 - ⊙ 3/4" X 30" REBAR SET
 - W/ I.D. CAP
 - POINT
 - STONE FOUND



APPROVED
MINOR LOT SPLIT ONLY
MUSKINGUM COUNTY
PLANNING COMMISSION DIRECTOR

Date 9/15/08 Fee Paid