

Being a part of the South East Quarter of Section 11, and a part of the Northeast Quarter of Section 14, Township 18 Range 15, Hopewell Township, Muskingum County, Ohio and being further described as follows:

Beginning at an existing stone marking the southwest Corner of the Southeast Quarter of Section 11; thence North 01 degree 02 minutes 20 seconds West 787.00 feet to a point marked by a 3/4 inch iron pin (set); thence North 01 degree 02 minutes 20 seconds West 41.19 feet to the center of county road number 71 (Coopermill Road); thence along the center of said County Road the next twelve courses and distances:

- 1) North 24 degrees 23 minutes 01 seconds East 52.60 feet to a point;
  - 2) North 19 degrees 02 minutes 51 seconds East 149.91 feet to a point;
  - 3) North 26 degrees 52 minutes 57 seconds East 57.97 feet to a point;
  - 4) North 37 degrees 17 minutes 06 seconds East 64.37 feet to a point;
  - 5) North 44 degrees 16 minutes 57 seconds East 60.60 feet to a point;
  - 6) North 45 degrees 50 minutes 32 seconds East 52.54 feet to a point;
  - 7) North 47 degrees 47 minutes 37 seconds East 49.22 feet to a point;
  - 8) North 50 degrees 20 minutes 56 seconds East 53.84 feet to a point;
  - 9) North 54 degrees 16 minutes 48 seconds East 46.51 feet to a point;
  - 10) North 59 degrees 57 minutes 49 seconds East 50.37 feet to a point;
  - 11) North 71 degrees 26 minutes 33 seconds East 44.67 feet to a point;
  - 12) North 79 degrees 12 minutes 49 seconds East 48.21 feet to a point;
- thence leaving the center of said County Road number 71 North 01 degree 38 minutes 37 seconds West 25.37 feet to a point; thence North 88 degrees 21 minutes 02 seconds East 637.30 feet to a point in the center line of County Road number 71 (Coopermill Road); thence leaving said center of County Road number 71 (Coopermill Road) South 05 degrees 14 minutes 12 seconds East 1487.514 feet to an existing iron pin, passing existing points marked by iron pins at 20.00 feet and 431.34 feet; thence South 67 degrees 19 minutes 51 seconds East 132.00 feet to an existing iron pin; thence South 04 degrees 41 minutes 28 seconds West 1170.84 feet to an existing iron pin; thence South 89 degrees 26 minutes 42 seconds East 132.00 feet to a point marked by a 3/4 inch iron pin (set); thence South 01 degree 33 minutes 52 seconds East 472.46 feet to a point marked by a 3/4 inch iron pin (set); thence South 88 degrees 29 minutes 38 seconds West 1385.06 feet to a point marked by a 3/4 inch iron pin (set); thence North 00 degrees 15 minutes 37 seconds West 1821.82 feet to the place of beginning.

Containing 88.942 acres more or less of which 34.456<sup>13</sup> acres more or less lies in the Southeast Quarter of Section 11 and 54.436 acres more or less lies in the Northeast Quarter of Section 14, subject to all legal road right-of-way.

I hereby certify the above description to be correct as prepared by me, this 4th day of September 1984.

W. J. BIEDENBACH  
REG. SURVEYOR #5718

Portman  
1646-6-84

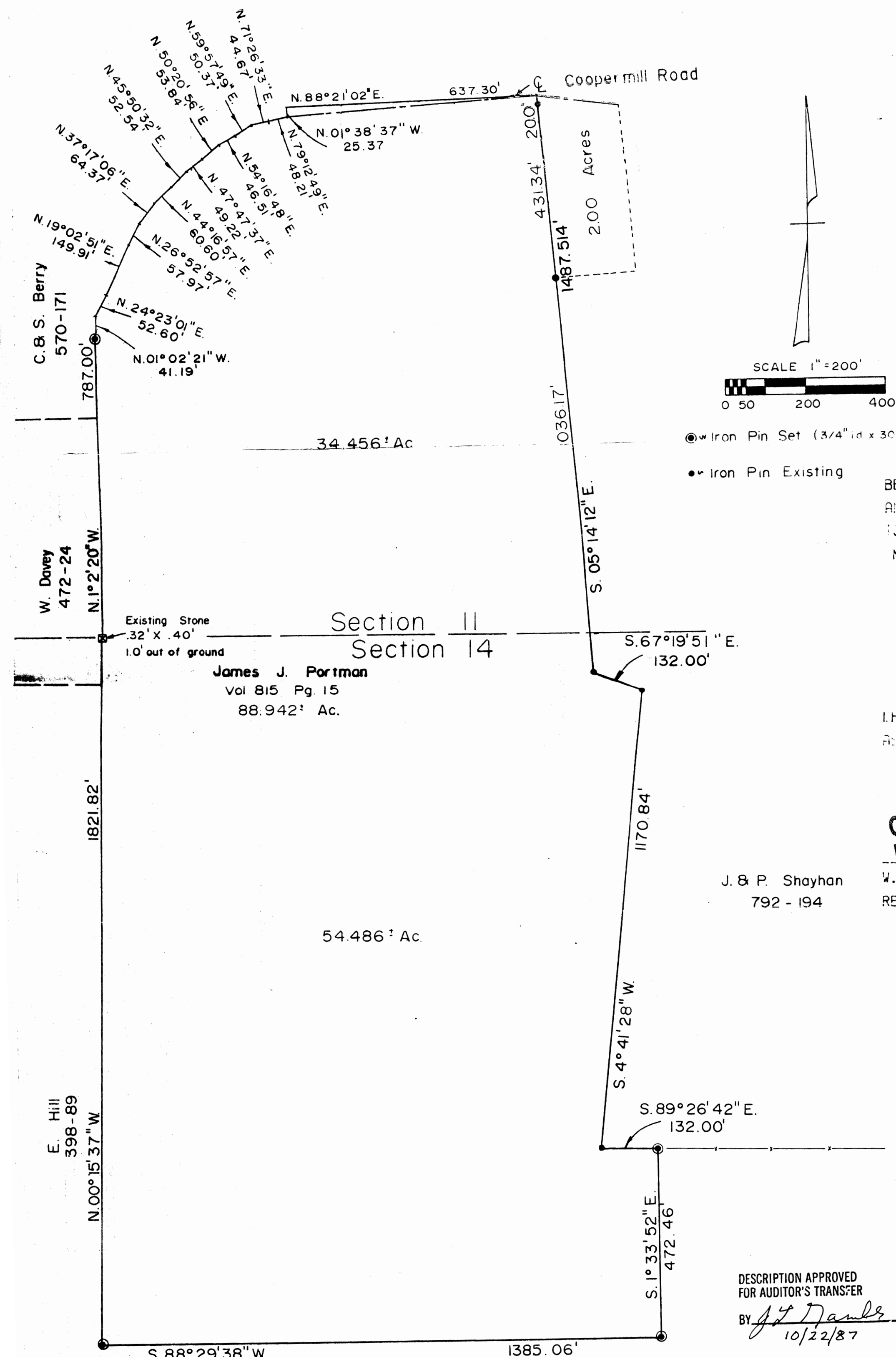


\* DESCRIPTION APPROVED  
FOR AUDITOR'S TRANSFER

BY J. L. Hambl  
10/22/87

\* Recd copy of Plat

25-25-85-11-13



BEING THE SOUTHEAST QUARTER OF SECTION 11,  
AND THE NORTHEAST QUARTER OF SECTION 14,  
TOWNSHIP 16, RANGE 15, HOPEWELL TOWNSHIP,  
MUSKINGUM COUNTY, OHIO.

I HEREBY CERTIFY THAT THE ABOVE PLAT AND SURVEY TO BE CORRECT  
AND PREPARED BY ME OR UNDER MY CLOSE PERSONAL SUPERVISION.

OFFICE COPY  
NOT RECORDABLE

OFFICE COPY  
NOT RECORDABLE

J. & P. Shayhan  
792 - 194

W. J. BIEDENBACH  
REG. SURVEYOR NO. 5710

DESCRIPTION APPROVED  
FOR AUDITOR'S TRANSFER  
BY *[Signature]*  
10/22/87

W. J. BIEDENBACH & ASSOC.  
Surveying & Mapping  
3120 Lisa Ln. Zanesville, Ohio 43701  
(614) 453-4850