



www.mcpeeklandsurveying.com  
email: brian@mcpeeklandsurveying.com  
340 Robin Hood Ln., \* Zanesville, Oh 43701 \* 740.704.6073

**Vacation of Rolla Drive & Alice Court**  
**All of: 29-40-17-37-999 (+/-1.476 Ac.)**

Situated in the State of Ohio, County of Muskingum, Township of Jackson and being part of the of the Northeast Quarter of Section 17, Township 3, Range 9, also being all Rolla Drive & Alice Court (parcel no.: 29-40-17-37-999) of the Muskingum County Recorder's Office more fully described as follows.

Beginning for reference at a pipe found at the southeast corner of said northeast quarter of Section 17, thence with the mid-section line the following two (2) courses:

1. N 87°56'43" W a distance of 476.20 feet to a pipe found (1" odot);
2. N 87°38'23" W a distance of 537.17 feet to a point at a southwesterly corner of the lands now owned by the State of Ohio (DR 1502-769);
3. N 27°13'46" E a distance of 97.81 feet to an iron pin set, the principal place of beginning, passing an iron pin set at 5.19 feet;

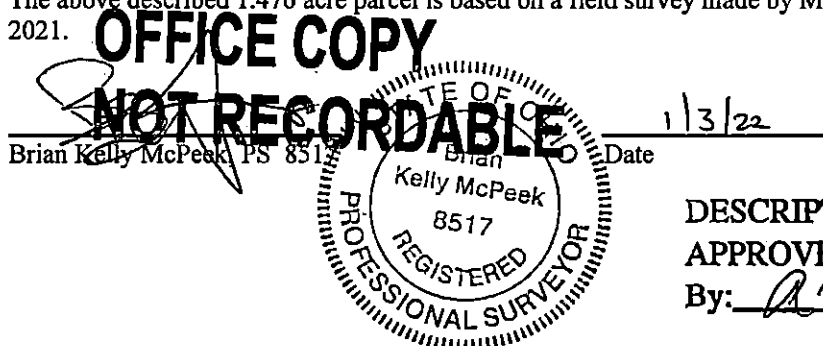
Thence with the perimeter of said Rolla Drive and Alice Court the following fifteen (15) courses:

1. N 27°09'51" E a distance of 168.34 feet to a point;
2. N 33°38'02" E a distance of 276.73 feet to a point;
3. with a curve turning to the left with an arc length of 62.75 feet, a radius of 100.00 feet, with a chord bearing N 15°39'18" E a distance of 61.73 feet;
4. N 02°19'32" W a distance of 173.88 feet to a point;
5. N 02°15'11" W a distance of 306.41 feet to a point;
6. with a curve turning to the right an arc length of 261.80 feet, a radius of 50.00 feet, with a chord bearing N 87°44'15" E a distance of 50.00 feet to a point;
7. S 02°15'11" E a distance of 310.49 feet to a point;
8. S 02°19'32" E a distance of 169.74 feet to a point;
9. With a curve turning to the right with an arc length 94.14 feet, a radius of 150.00 feet and a chord bearing S 15°39'18" W a distance of 92.60 feet to a point;
10. S 44°46'07" E a distance of 139.44 feet to an iron pin set;
11. S 49°32'13" W a distance of 50.14 feet to an iron pin set;
12. N 44°46'07" W a distance of 125.40 feet to a point;
13. S 33°38'02" W a distance of 222.87 feet to a point;
14. S 27°09'51" W a distance of 165.60 feet to an iron pin set;
15. N 62°43'07" W a distance of 50.00 feet to the principal place of beginning, containing a total of 1.476 acres, more or less, subject to all legal highways and easements of record.

All bearings described herein are based on the Ohio State Plane Grid Coordinates, NAD83, Ohio South per GPS Observation.

All iron pins set are 5/8 inch by 30 inch steel rebar with plastic identification caps marked MCPEEK PS8517.

The above described 1.476 acre parcel is based on a field survey made by McPeek Land Surveying on July 2<sup>nd</sup>, 2021.



DESCRIPTION

APPROVED

By: AK 2/10/22