

SITUATED IN

The State of Ohio, County of Muskingum,
Township of Licking, Part of Quarter Twp.1,
T2, R9, United States Military Lands.

BASIS OF BEARING

Bearings & distances are based on State Plane Grid Coordinates,
NAD83, Ohio South, per GPS Observation.

REFERENCES

* As Noted on Plat
www.muskingumcountyauditor.org
www.mceo.org
http://recorder.muskingumcounty.org

DESCRIPTION APPROVED

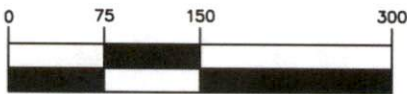
By: MB 6/6/2022

APPROVED
MUSKINGUM COUNTY
PLANNING COMMISSION DIRECTOR

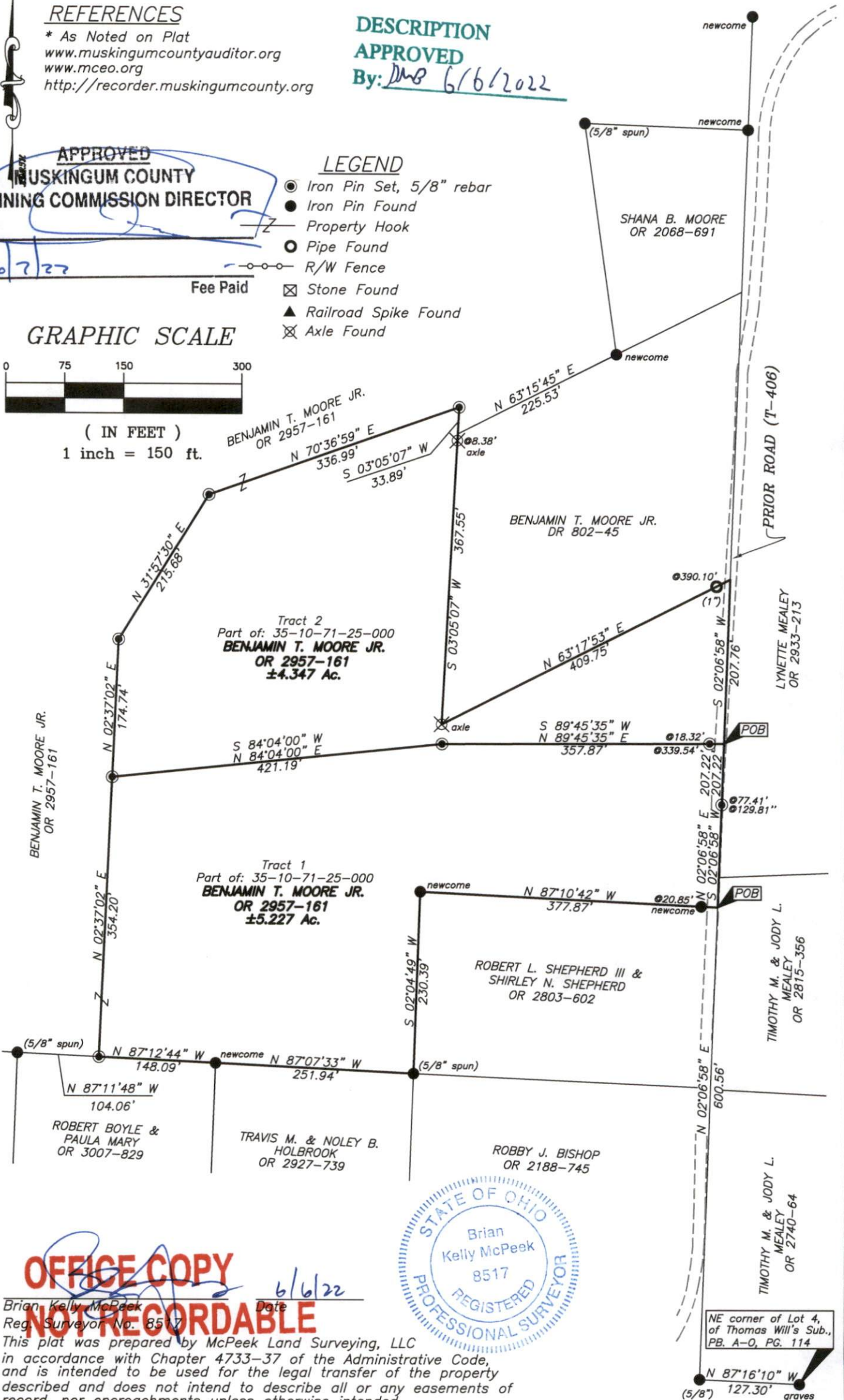
LEGEND

- Iron Pin Set, 5/8" rebar
- Iron Pin Found
- Property Hook
- Pipe Found
- R/W Fence
- ⊠ Stone Found
- ▲ Railroad Spike Found
- ⊗ Axle Found

GRAPHIC SCALE



(IN FEET)
1 inch = 150 ft.



OFFICE COPY

NOT RECORDABLE

This plat was prepared by McPeck Land Surveying, LLC
in accordance with Chapter 4733-37 of the Administrative Code,
and is intended to be used for the legal transfer of the property
described and does not intend to describe all or any easements of
record, nor encroachments unless otherwise intended.

