

1

DESCRIPTION FOR CONVEYANCE

SAR MAP

- PARCEL NUMBER 40-40-70-29-19-000 (ALL)
- PARCEL NUMBER 40-40-70-29-20-000 (ALL)
- PARCEL NUMBER 40-40-70-31-01-000 (ALL)
- PARCEL NUMBER 40-40-70-32-02-000 (ALL)
- PARCEL NUMBER 40-40-70-32-04-000 (ALL)

BEING A PART OF THE SOUTHWEST QUARTER OF SECTION 29, A PART OF THE NORTHEAST QUARTER OF SECTION 31, AND A PART OF THE NORTH HALF OF SECTION 32, TOWNSHIP 12, RANGE 11, OF THE CONGRESS LANDS EAST OF THE SCIOTO RIVER, NEIGS TOWNSHIP, MUSKINGUM COUNTY, OHIO AND BEING FURTHER DESCRIBED AS FOLLOWS:

BEGINNING AT AN EXISTING IRON PIN (1/2 INCH REBAR) AT THE NORTHWEST CORNER OF SECTION 32; THENCE ALONG THE WEST LINE OF SECTION 29 AND THE EAST LINE OF A TRACT CONVEYED TO T. HILL (VOLUME 1053, PAGE 539) NORTH 66 DEGREES 40 MINUTES 45 SECONDS WEST 1267.00 FEET TO AN IRON PIN SET AT THE SOUTHWEST CORNER OF A TRACT CONVEYED TO R. AND F. DINGEY (VOLUME 450, PAGE 399); THENCE ALONG THE SOUTH LINE OF SAID R. AND F. DINGEY TRACT NORTH 76 DEGREES 06 MINUTES 08 SECONDS EAST, PASSING AN IRON PIN SET AT 557.79 FEET, A TOTAL DISTANCE OF 677.09 FEET TO A POINT IN THE CENTER OF COUNTY ROAD 45 (CUTLER LAKE ROAD); THENCE ALONG THE CENTER OF SAID ROAD THE NEXT TWENTY COURSES AND DISTANCES:

- 1) SOUTH 09 DEGREES 21 MINUTES 29 SECONDS EAST 58.91 FEET TO A POINT,
- 2) SOUTH 22 DEGREES 02 MINUTES 24 SECONDS EAST 59.91 FEET TO A POINT,
- 3) SOUTH 31 DEGREES 17 MINUTES 59 SECONDS EAST 71.64 FEET TO A POINT,
- 4) SOUTH 37 DEGREES 27 MINUTES 59 SECONDS EAST 67.33 FEET TO A POINT,
- 5) SOUTH 41 DEGREES 22 MINUTES 51 SECONDS EAST 124.09 FEET TO A POINT,
- 6) SOUTH 46 DEGREES 38 MINUTES 28 SECONDS EAST 71.01 FEET TO A POINT,
- 7) SOUTH 56 DEGREES 44 MINUTES 39 SECONDS EAST 73.55 FEET TO A POINT,
- 8) SOUTH 50 DEGREES 39 MINUTES 26 SECONDS EAST 96.42 FEET TO A POINT,
- 9) SOUTH 56 DEGREES 13 MINUTES 27 SECONDS EAST 73.78 FEET TO A POINT,
- 10) SOUTH 52 DEGREES 39 MINUTES 22 SECONDS EAST 75.47 FEET TO A POINT,
- 11) SOUTH 47 DEGREES 32 MINUTES 07 SECONDS EAST 75.79 FEET TO A POINT,
- 12) SOUTH 44 DEGREES 10 MINUTES 17 SECONDS EAST 562.73 FEET TO A POINT,
- 13) SOUTH 37 DEGREES 28 MINUTES 59 SECONDS EAST 60.94 FEET TO A POINT,
- 14) SOUTH 26 DEGREES 47 MINUTES 48 SECONDS EAST 47.49 FEET TO A POINT,
- 15) SOUTH 22 DEGREES 17 MINUTES 35 SECONDS EAST 87.09 FEET TO A P-K MARK SET,
- 16) SOUTH 32 DEGREES 18 MINUTES 40 SECONDS EAST 42.47 FEET TO A POINT,
- 17) SOUTH 39 DEGREES 19 MINUTES 42 SECONDS EAST 77.52 FEET TO A POINT,
- 18) SOUTH 45 DEGREES 11 MINUTES 31 SECONDS EAST 78.11 FEET TO A POINT,
- 19) SOUTH 47 DEGREES 27 MINUTES 37 SECONDS EAST 131.34 FEET TO A POINT,
- 20) SOUTH 49 DEGREES 19 MINUTES 15 SECONDS EAST 31.02 FEET TO AN EXISTING RAIL ROAD SPIKE ON THE NORTH LINE OF SECTION 32 AND ALSO THE NORTH LINE OF A TRACT CONVEYED TO R. DINGEY (VOLUME 1023, PAGE 398);

THENCE ALONG THE WEST LINES OF SAID R. DINGEY TRACT THE NEXT SEVEN CLOSE COURSES AND DISTANCES:

- 1) SOUTH 90 DEGREES 00 MINUTES 00 SECONDS WEST 400.27 FEET TO AN EXISTING IRON PIN (5/8 INCH REBAR),
- 2) SOUTH 04 DEGREES 04 MINUTES 01 SECONDS EAST 367.57 FEET TO A POINT, SAID POINT BEING NORTH 86 DEGREES 58 MINUTES 16 SECONDS WEST 107.23 FEET FROM AN EXISTING IRON PIN (5/8 INCH REBAR),

AI. 04. 23
AC.

579.825

N 89° 58' 23"

↑

589.582

1539.825

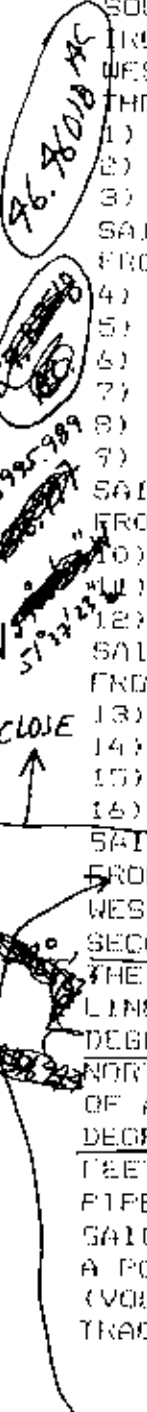
**OFFICE COPY
NOT RECORDABLE**

DESCRIPTION APPROVED
FOR AUDITOR'S TRANSFER
BY Ad Smith
7-9-93

seconds

3) SOUTH 37 DEGREES 04 MINUTES 01 SECONDS EAST 668.31 FEET TO A POINT,
 SAID POINT BEING SOUTH 50 DEGREES 16 MINUTES 54 SECONDS WEST 99.12 FEET
 FROM AN EXISTING IRON PIN (5/8 INCH REBAR),
 4) SOUTH 42 DEGREES 04 MINUTES 01 SECONDS EAST 634.70 FEET TO A POINT,
 SAID POINT BEING SOUTH 19 DEGREES 34 MINUTES 27 SECONDS WEST 70.32 FEET
 FROM AN EXISTING IRON PIN (5/8 INCH REBAR),
 5) SOUTH 65 DEGREES 04 MINUTES 01 SECONDS EAST 364.22 FEET TO A POINT,
 6) NORTH 01 DEGREES 25 MINUTES 57 SECONDS WEST, PASSING AN EXISTING
 IRON PIN (5/8 INCH REBAR) AT 73.46 FEET AND PASSING AN IRON PIN SET AT
 191.56 FEET, A TOTAL DISTANCE OF 200.56 FEET TO A POINT,
 7) NORTH 89 DEGREES 15 MINUTES 33 SECONDS EAST 343.93 FEET TO A POINT
 IN THE CENTER OF COUNTY ROAD 45 (CUTLER LAKE ROAD), SAID POINT BEING
 SOUTH 89 DEGREES 15 MINUTES 33 SECONDS WEST 30.00 FEET FROM AN EXISTING
 IRON PIN (5/8 INCH REBAR); THENCE ALONG THE CENTER OF SAID ROAD AND THE
 WEST LINE OF A TRACT CONVEYED TO SAID R. DINGEY (VOLUME 1058, PAGE 549)
 THE NEXT SIXTEEN COURSES AND DISTANCES:

1) SOUTH 22 DEGREES 34 MINUTES 57 SECONDS EAST 98.46 FEET TO A POINT,
 2) SOUTH 12 DEGREES 16 MINUTES 30 SECONDS EAST 63.05 FEET TO A POINT,
 3) SOUTH 02 DEGREES 47 MINUTES 42 SECONDS EAST 39.22 FEET TO A POINT,
 SAID POINT BEING NORTH 31 DEGREES 30 MINUTES 49 SECONDS WEST 29.66 FEET
 FROM AN EXISTING IRON PIN (5/8 INCH REBAR),
 4) SOUTH 09 DEGREES 46 MINUTES 33 SECONDS WEST 89.71 FEET TO A POINT,
 5) SOUTH 12 DEGREES 20 MINUTES 08 SECONDS WEST 76.41 FEET TO A POINT,
 6) SOUTH 17 DEGREES 05 MINUTES 43 SECONDS WEST 87.46 FEET TO A POINT,
 7) SOUTH 21 DEGREES 11 MINUTES 22 SECONDS WEST 74.26 FEET TO A POINT,
 8) SOUTH 22 DEGREES 20 MINUTES 03 SECONDS WEST 60.55 FEET TO A POINT,
 9) SOUTH 18 DEGREES 37 MINUTES 20 SECONDS WEST 64.56 FEET TO A POINT,
 SAID POINT BEING NORTH 65 DEGREES 15 MINUTES 00 SECONDS WEST 20.04 FEET
 FROM AN EXISTING IRON PIN (5/8 INCH REBAR),
 10) SOUTH 06 DEGREES 03 MINUTES 15 SECONDS WEST 122.95 FEET TO A POINT,
 11) SOUTH 04 DEGREES 20 MINUTES 15 SECONDS EAST 68.53 FEET TO A POINT,
 12) SOUTH 11 DEGREES 30 MINUTES 00 SECONDS EAST 100.49 FEET TO A POINT,
 SAID POINT BEING NORTH 89 DEGREES 26 MINUTES 35 SECONDS WEST 18.77 FEET
 FROM AN EXISTING IRON PIN (5/8 INCH REBAR),
 13) SOUTH 15 DEGREES 34 MINUTES 57 SECONDS EAST 92.12 FEET TO A POINT,
 14) SOUTH 25 DEGREES 14 MINUTES 20 SECONDS EAST 74.66 FEET TO A POINT,
 15) SOUTH 36 DEGREES 45 MINUTES 40 SECONDS EAST 64.87 FEET TO A POINT,
 16) SOUTH 45 DEGREES 30 MINUTES 54 SECONDS EAST 50.07 FEET TO A POINT,
 SAID POINT BEING NORTH 11 DEGREES 46 MINUTES 55 SECONDS WEST 50.89 FEET
 FROM AN EXISTING IRON PIN (5/8 INCH REBAR); THENCE CONTINUING ALONG THE
 WEST LINE OF SAID R. DINGEY TRACT SOUTH 05 DEGREES 38 MINUTES 39
SECONDS WEST 227.70 FEET TO AN EXISTING IRON PIN (5/8 INCH REBAR) AT
THE SOUTHWEST CORNER OF SAID R. DINGEY TRACT; THENCE ALONG THE NORTH
LINE OF A TRACT CONVEYED TO D. DINGEY (VOLUME 538, PAGE 925) NORTH 09
DEGREES 55 MINUTES 39 SECONDS WEST 374.36 FEET TO A POINT AT THE
NORTHWEST CORNER OF SAID D. DINGEY TRACT; THENCE ALONG THE NORTH LINE
OF A TRACT CONVEYED TO J. DINGEY (VOLUME 1070, PAGE 71) NORTH 89
DEGREES 55 MINUTES 13 SECONDS WEST, PASSING AN IRON PIN SET AT 20.43
FEET, A TOTAL DISTANCE OF 2675.18 FEET TO AN EXISTING IRON PIN (1 INCH
PIPE) ON THE WEST LINE OF SECTION 32; THENCE ALONG THE WEST LINE OF
SAID SECTION NORTH 01 DEGREES 17 MINUTES 06 SECONDS WEST 527.11 FEET TO
A POINT AT THE NORTHEAST CORNER OF A TRACT CONVEYED TO M. RAYNOR
(VOLUME 1055, PAGE 428); THENCE ALONG THE NORTH LINE OF SAID RAYNOR
TRACT THE NEXT FOUR COURSES AND DISTANCES:
 FIVE



5 51° 37' 23 E
 3995.989

**OFFICE COPY
 NOT RECORDABLE**

- 1) NORTH 76 DEGREES 26 MINUTES 51 SECONDS WEST, PASSING AN EXISTING IRON PIN (1/2 INCH REBAR) AT 0.75 FEET, A TOTAL DISTANCE OF 1709.57 FEET TO AN EXISTING IRON PIN (1/2 INCH REBAR),
- 2) NORTH 01 DEGREES 17 MINUTES 08 SECONDS WEST 408.34 FEET TO AN IRON PIN SET,
- 3) NORTH 88 DEGREES 42 MINUTES 52 SECONDS EAST 236.26 FEET TO AN IRON PIN SET,
- 4) NORTH 01 DEGREES 17 MINUTES 08 SECONDS WEST 1353.00 FEET TO AN IRON PIN SET ON THE NORTH LINE OF SECTION 31,
- 5) ALONG THE NORTH LINE OF SAID SECTION AND THE SOUTH LINE OF THE ABOVE FORE MENTIONED HILL TRACT SOUTH 89 DEGREES 38 MINUTES 37 SECONDS EAST 1494.24 FEET TO THE PLACE OF BEGINNING.

74,380 AC.
Close
↑

CONTAINING 261.891 MORE OR LESS ACRES TOTAL HAVING 41.049 MORE OR LESS ACRES IN SECTION 29, 70.725 MORE OR LESS ACRES IN SECTION 31 AND 149.867 MORE OR LESS ACRES IN SECTION 32. SUBJECT TO ALL LEGAL ROAD RIGHT-OF-WAY OF COUNTY ROAD 45 (CUTLER LAKE ROAD), TOWNSHIP ROAD 492 (RAYNOR LANE), AND TOWNSHIP ROAD 676 (REN LANE) AND ALL OTHER APPLICABLE EASEMENTS.

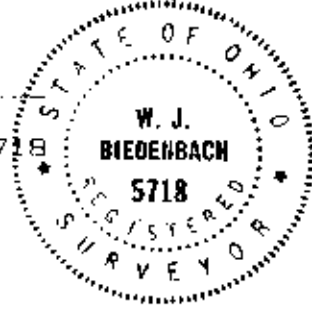
BEARINGS ARE BASED ON THE PREVIOUS SURVEY OF 1.00 MORE OR LESS ACRE AS RECORDED IN VOLUME B13, PAGE 72 OF THE MUSKINGUM COUNTY DEED RECORDS.

ALL IRON PINS SET ARE 5/8 INCH X 30 INCH REBAR WITH PLASTIC IDENTIFICATION CAP.

I HEREBY CERTIFY TO THE BEST OF MY KNOWLEDGE THE SURVEY AND DESCRIPTION TO BE CORRECT AS PREPARED BY ME, THIS 16TH DAY OF JUNE 1993.

W. J. Biedenbach
W. J. BIEDENBACH

REGISTERED SURVEYOR #5718



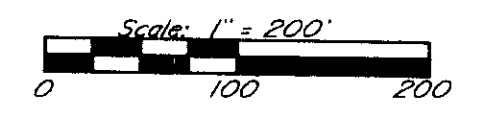
03609-5 R. LYON

**OFFICE COPY
NOT RECORDABLE**

41.04956 AC.
 46.46018 AC.
 174.38290 AC.

 261.89214

40-70-29-23 9765 CUTLER LAKE RD
 40-70-31-01 N/A
 40-70-32-04 10240 RENN LN.



- △ - Existing Stone
- - Existing Iron Pin ($\frac{5}{8}$ " rebar unless otherwise noted)
- ⊙ - Iron Pin Set ($\frac{3}{8}$ " x 30" rebar w/ plastic id. cap)

Research

Vol. 525	Pg. 684
Vol. 451	Pg. 149
Vol. 450	Pg. 399
Vol. 987	Pg. 560
Vol. 538	Pg. 925
Vol. 943	Pg. 68
Vol. 1055	Pg. 428
Vol. 1070	Pg. 71
Vol. 1058	Pg. 549
Vol. 1023	Pg. 398
Vol. 1053	Pg. 539
Vol. 1039	Pg. 550

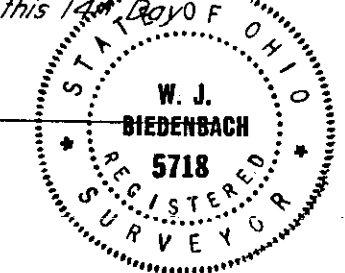
Bearings are based on the previous survey of 100+ Acres as recorded in Vol. 813, Pg. 72 of the Muskingum County Deed Records.

Being a part of the Southwest Quarter of Section 29, a part of the Northeast Quarter of Section 31, and a part of the North Half of Section 32, Township 12, Range 11, of the Congress Lands East of the Scioto River, Meigs Township, Muskingum County, Ohio.

I hereby certify to the best of my knowledge, information and belief, that the above plat and survey to be recorded by me, this 14th day of July, 1993, is a true and correct copy of the original.

OFFICE COPY NOT RECORDABLE

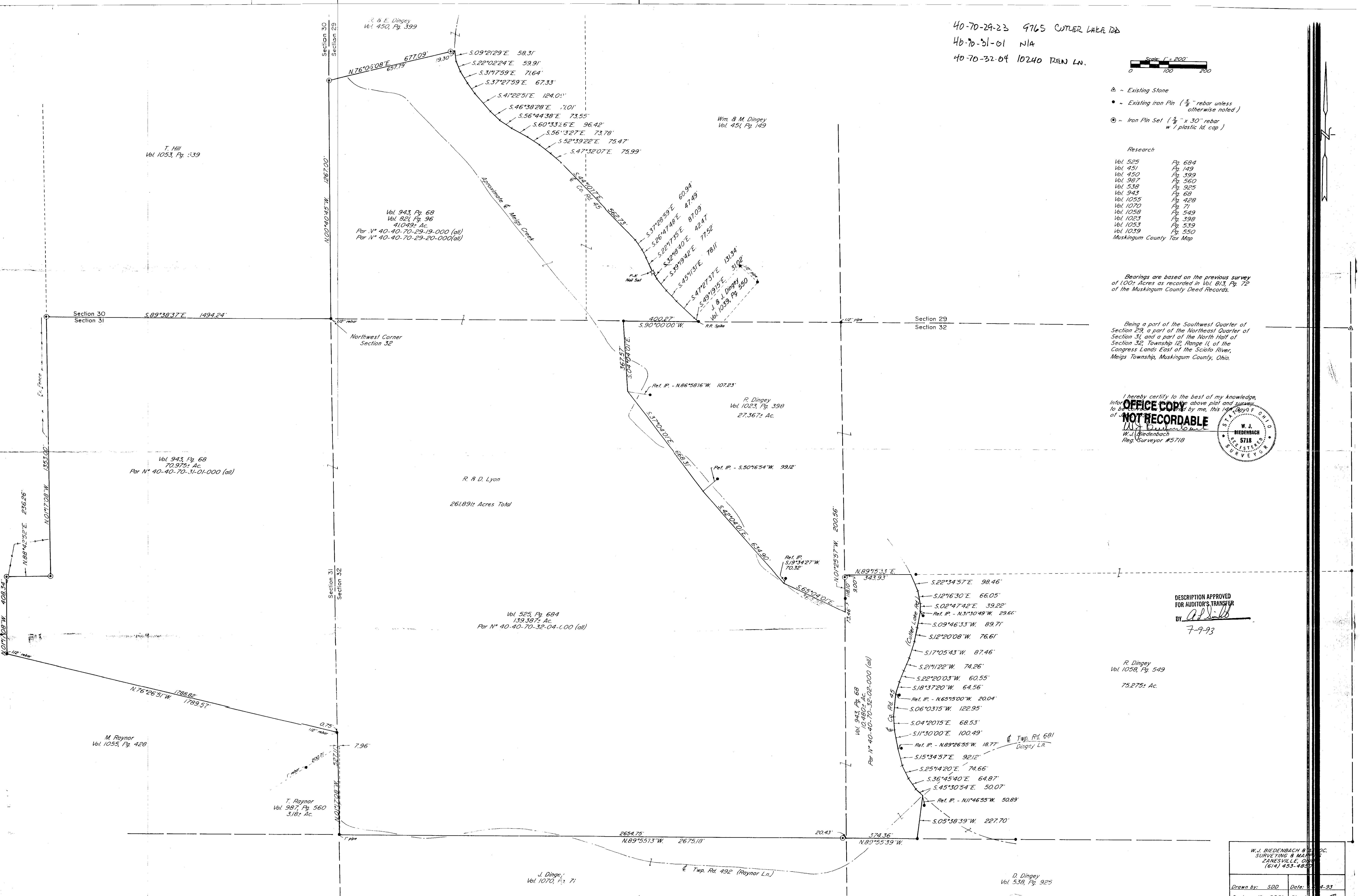
W. J. BIEDENBACH
 Reg. Surveyor #5718



DESCRIPTION APPROVED FOR AUDITOR'S TRANSFER

BY: *Ad Smith*
 7-9-93

R. Dingey
 Vol. 1058, Pg. 549
 75.275± Ac.



T. Hill
 Vol. 1053, Pg. 339

Vol. 943, Pg. 68
 Vol. 821, Pg. 96
 41.049± Ac.
 Par. N° 40-40-70-29-19-000 (all)
 Par. N° 40-40-70-29-20-000 (all)

Wm. & M. Dingey
 Vol. 451, Pg. 149

Northwest Corner
 Section 32

R. Dingey
 Vol. 1023, Pg. 398
 27.367± Ac.

R. & D. Lyon
 261.89± Acres Total

Vol. 525, Pg. 684
 139.387± Ac.
 Par. N° 40-40-70-32-04-100 (all)

Vol. 943, Pg. 68
 70.975± Ac.
 Par. N° 40-40-70-31-01-000 (all)

M. Raynor
 Vol. 1055, Pg. 428

T. Raynor
 Vol. 987, Pg. 560
 3.18± Ac.

J. Dingey
 Vol. 1070, Pg. 71

D. Dingey
 Vol. 538, Pg. 925

W. J. BIEDENBACH & SONS
 SURVEYING & MAPPING
 ZANESVILLE, OHIO
 (614) 453-4800

Drawn by: SDD Date: 7-9-93