

### SITUATED IN

The State of Ohio, County of Muskingum,  
Township of Meigs, Northeast Quarter of  
Sec. 31, T12, R11, Congress Lands East  
of the Scioto River.

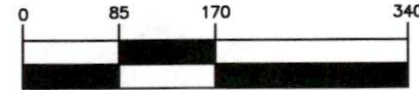
### BASIS OF BEARING

Bearings & distances are based on State Plane Grid Coordinates,  
NAD83, Ohio South, per GPS Observation.

### REFERENCES

\* As Noted on Plat  
[www.muskingumcountyauditor.org](http://www.muskingumcountyauditor.org)  
[www.mceo.org](http://www.mceo.org)  
<http://recorder.muskingumcounty.org>

### GRAPHIC SCALE



( IN FEET )  
inch = 170 ft.

### LINE TABLE

LINE	BEARING	DISTANCE
L1	N 67°24'23" E	20.17'
L2	N 56°01'29" W	74.45'
L3	N 49°08'35" W	52.44'
L4	N 43°42'52" W	58.21'
L5	N 30°46'32" W	29.49'
L6	N 05°59'03" W	61.91'
L7	N 11°04'27" W	34.34'
L8	N 19°32'36" W	38.94'
L9	N 35°34'39" W	55.80'
L10	N 44°52'29" W	51.23'
L11	N 64°05'03" W	49.56'
L12	N 76°56'42" W	82.68'
L13	N 71°08'54" W	70.03'
L14	N 74°56'04" W	37.98'
L15	N 82°52'22" W	54.27'
L16	S 67°06'16" W	136.38'
L17	S 68°16'38" W	68.56'

APPROVED  
MUSKINGUM COUNTY  
PLANNING COMMISSION DIRECTOR

5/17/22  
Date

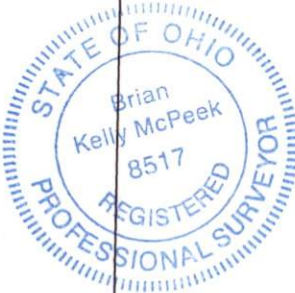
### LEGEND

- Iron Pin Set, 5/8" rebar
- Iron Pin Found
- Z— Property Hook
- Pipe Found
- R/W Fence
- ⊠ Stone Found
- ▲ Railroad Spike Found

### DESCRIPTION

APPROVED

By: *[Signature]*



OFFICE COPY  
NOT RECORDABLE

4/25/2022  
Date  
Brian Kelly McPeck  
Reg. Surveyor No. 8517

This plat was prepared by McPeck Land Surveying, LLC  
in accordance with Chapter 4733-37 of the Administrative Code,  
and is intended to be used for the legal transfer of the property  
described and does not intend to describe all or any easements of  
record, nor encroachments unless otherwise intended.

