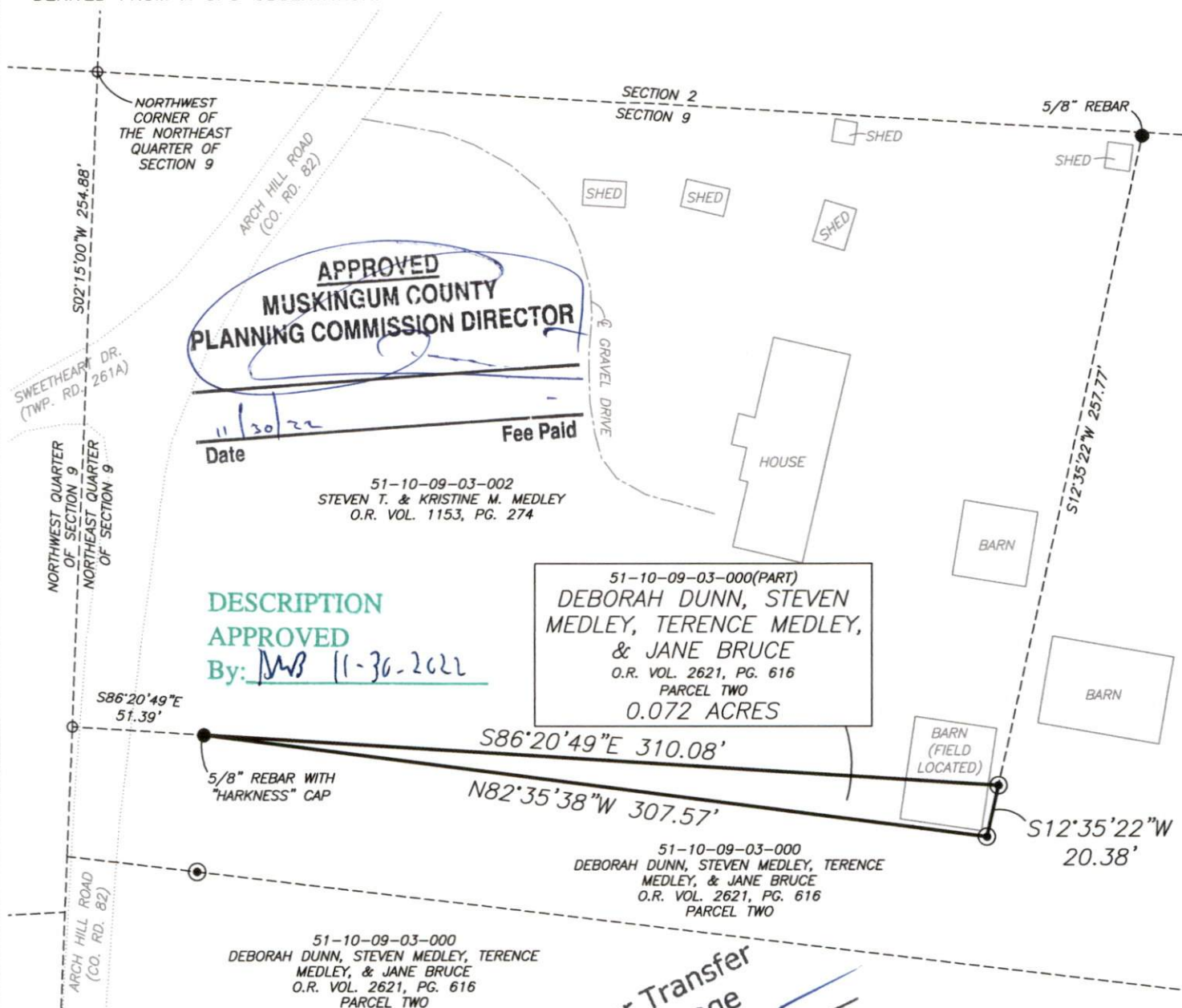


TO BE COMBINED WITH 51-10-09-03-002

BEARINGS ARE BASED ON OHIO STATE PLANE COORDINATE SYSTEM 1983(2011), OHIO SOUTH ZONE, GRID,  
DERIVED FROM A GPS OBSERVATION.



PREVIOUS SURVEY OF A 78.743 AC. PARCEL COMPLETED NOV. 6,  
2018 BY J. LEACHMAN PS8536.  
PREVIOUS SURVEY OF A 2.00 AC. PARCEL COMPLETED OCT. 21,  
1991 BY R.L. DANIELS PS5410.  
PREVIOUS SURVEY OF A 42.639 AC. PARCEL COMPLETED AUG. 3,  
1990 BY C.R. HARKNESS PS6885.  
PREVIOUS SURVEY OF A 2.70 AC. PARCEL COMPLETED SEPT. 10,  
1987 BY R.L. DANIELS PS5410.  
PREVIOUS SURVEY OF A 2.25 AC. PARCEL COMPLETED JAN. 29,  
1999 BY C.R. HARKNESS PS6885.  
PREVIOUS SURVEY OF A 3.000 AC. PARCEL COMPLETED APRIL 17,  
1979 BY W.J. BIEDENBACH PS5718.  
PREVIOUS SURVEY OF A 4.417± AC. PARCEL COMPLETED MAY 17,  
2019 BY B.K. McPEEK PS8517.  
PREVIOUS SURVEY OF A 1.93 AC. PARCEL COMPLETED JULY 22,  
1988 BY L.P. DINAN PS5451.  
PREVIOUS SURVEY OF A 0.341± AC. PARCEL COMPLETED APRIL  
21, 1998 BY W.J. BIEDENBACH PS5718.  
PREVIOUS SURVEY OF A 15.602 AC. PARCEL COMPLETED MAY  
1991 BY J.D. EPPLEY PS6410.  
PREVIOUS SURVEY OF A 40.193 AC. PARCEL COMPLETED MAY 12,  
1994 BY R.L. DANIELS PS5410.  
PREVIOUS SURVEY OF A 53.26 AC., 179.13 AC., & 40.70 AC.  
PARCEL COMPLETED JULY 30, 2009 BY C.R. HARKNESS PS6885.  
PREVIOUS SURVEY OF A 2.465 AC. & 0.750 AC. PARCEL  
COMPLETED SEPT. 25, 2002 BY G.W. STEWART PS3657.  
OHIO GEOGRAPHICALLY REFERENCED INFORMATION PROGRAM  
MUSKINGUM COUNTY GIS

000  
MEDLEY, TERENCE  
BRUCE  
PG. 616  
VO

Approved For Transfer  
No On-Lot Sewage

Date 11-28-22 [Signature]

Zanesville - Muskingum County  
Health Department

NOT TO BE  
SITE OR 1  
PARCEL IN  
COMMISSION  
WITH APPL

NOT TO BE USED AS A SEPARATE BUILDING SITE OR TRANSFERRED AS AN INDEPENDENT PARCEL IN THE FUTURE WITHOUT PLANNING COMMISSION APPROVAL IN ACCORDANCE WITH APPLICABLE SUBDIVISION REGULATIONS.

- EXISTING IRON PIN
- ⊙ IRON PIN SET (5/8" REBAR W/CAP 30" LONG)
- ANGLE POINTS

I, JASON LEACHMAN, HEREBY CERTIFY TO THE BEST OF MY KNOWLEDGE AND BELIEF THE ABOVE PLAT AND SURVEY TO BE CORRECT AS PREPARED BY ME, THIS 8th DAY OF NOVEMBER, 2022, FROM A FIELD SURVEY COMPLETED THE 8th DAY OF NOVEMBER, 2022.

JASON LEACHMAN  
PROFESSIONAL SURVEYOR #8536



THIS PROPERTY IS SUBJECT TO ALL APPLICABLE EASEMENTS, RIGHT OF WAYS, OR RESTRICTIONS, WHETHER RECORDED OR IMPLIED. THIS PLAT, PREPARED IN ACCORDANCE WITH CHAPTER 4733-37 OF THE ADMINISTRATIVE CODE, IS INTENDED FOR THE LEGAL TRANSFER OF THE PROPERTY SHOWN AND DOES NOT INTEND TO SHOW ANY OR ALL OF THE EASEMENTS, RIGHT OF WAYS, RESTRICTIONS OR ENCROACHMENTS UNLESS OTHERWISE INDICATED.

phone: 740-453-4850, email: BEI@rrhio.com, [www.BaselineSurveyingInc.com](http://www.BaselineSurveyingInc.com)

DRAWING NO:  
3:\6681\6681.dwg

DRAWING NO:  
Z:\6681\6681.dwg