

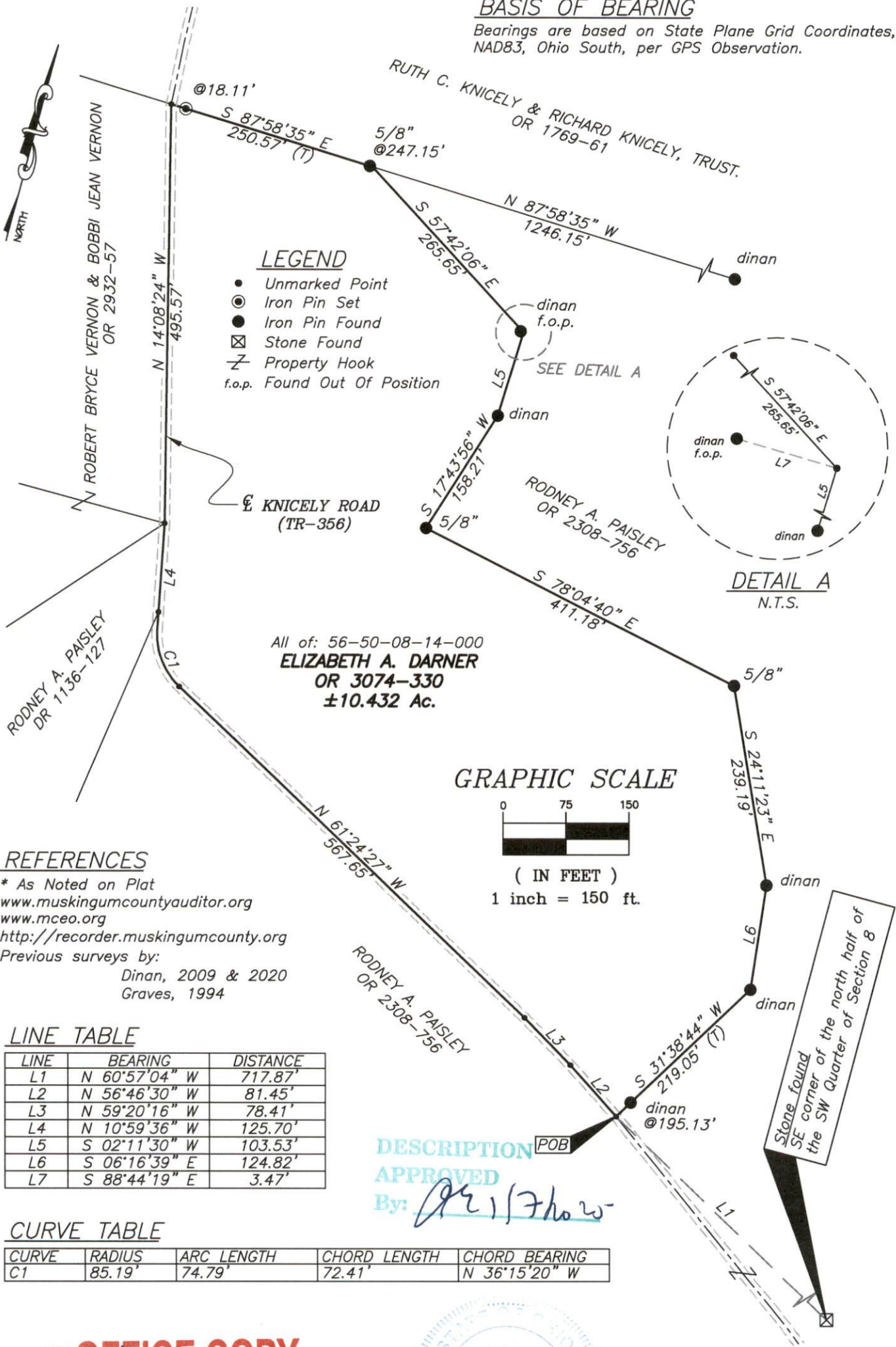
SITUATED IN

The State of Ohio, County of Muskingum, Township of Salem, being part of the North Half of the Southwest Quarter of Section 8, T2, R6, United States Military Lands.

ReSurvey

BASIS OF BEARING

Bearings are based on State Plane Grid Coordinates, NAD83, Ohio South, per GPS Observation.



REFERENCES

* As Noted on Plat
www.muskingumcountyauditor.org
www.mceo.org
http://recorder.muskingumcounty.org
Previous surveys by:
Dinan, 2009 & 2020
Graves, 1994

LINE TABLE

LINE	BEARING	DISTANCE
L1	N 60°57'04" W	717.87'
L2	N 56°46'30" W	81.45'
L3	N 59°20'16" W	78.41'
L4	N 10°59'36" W	125.70'
L5	S 02°11'30" W	103.53'
L6	S 06°16'39" E	124.82'
L7	S 88°44'19" E	3.47'

CURVE TABLE

CURVE	RADIUS	ARC LENGTH	CHORD LENGTH	CHORD BEARING
C1	85.19'	74.79'	72.41'	N 36°15'20" W

OFFICE COPY
NOT RECORDABLE
Brian Kelly McPeck
Reg. Surveyor No. 8517
Date: 12/16/24

This plat was prepared by McPeck Land Surveying, LLC in accordance with Chapter 4733-37 of the Administrative Code, and is intended to be used for the legal transfer of the property described and does not intend to describe all or any easements of record, nor encroachments unless otherwise intended.



**MCPECK
LAND
SURVEYING**

www.mcpeeklandsurveying.com
email: brian@mcpeeklandsurveying.com
1705 East Pike, Zanesville, Oh 43701 • 740.704.6073