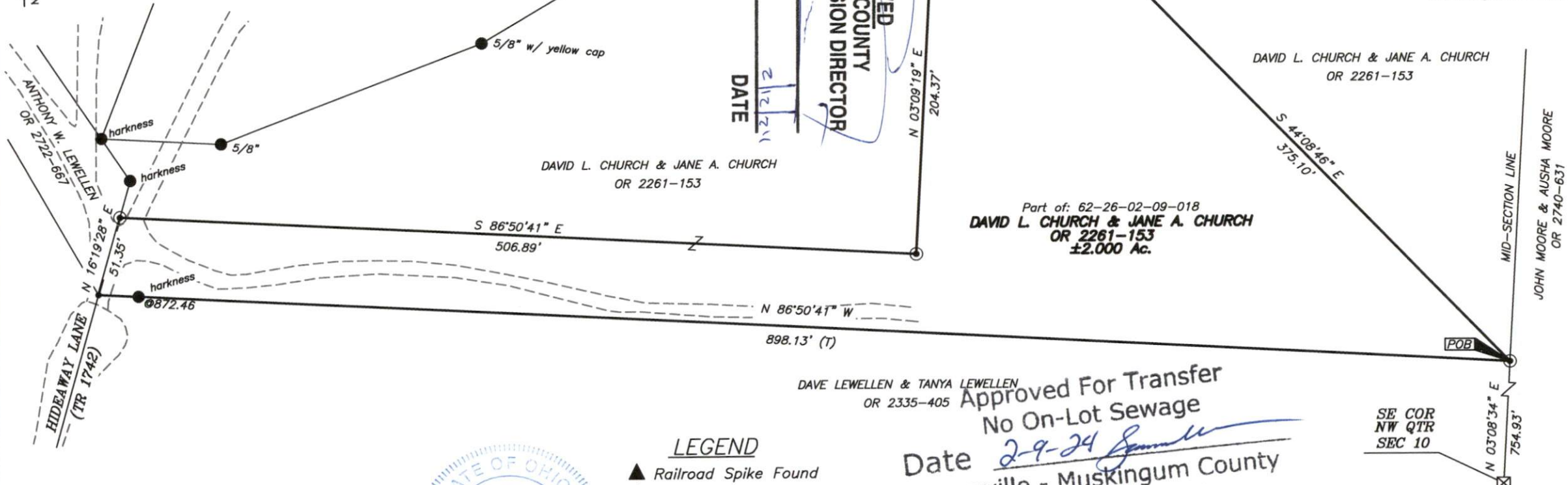


### SITUATED IN

The State of Ohio, County of Muskingum  
Township of Springfield, and being a part  
of Sec. 10, T16, R14.

### BASIS OF BEARING

Bearings are based on State Plane Grid Coordinates,  
NAD83, Ohio South, per GPS Observation.



### Survey Split

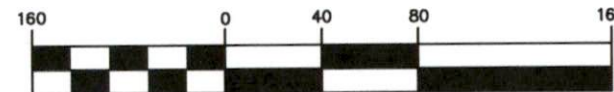
### REFERENCES

\* As Noted on Plat  
[www.muskingumcountyauditor.org](http://www.muskingumcountyauditor.org)  
[www.mceo.org](http://www.mceo.org)  
<http://recorder.muskingumcounty.org>

### LEGEND

- ▲ Railroad Spike Found
- △ Railroad Spike Set
- Iron Pin Found
- Pipe Found w/cap
- ⊠ Stone Found
- Z- Property Hook
- ⊙ Iron Pin Set
- Ex. Fence
- Point Not Marked

Approved For Transfer  
No On-Lot Sewage  
Date 2-9-24  
Zanesville - Muskingum County  
Health Department  
GRAPHIC SCALE



( IN FEET )  
1 inch = 80 ft.

OFFICE COPY  
NOT RECORDABLE

Brian Kelly McPeck  
Reg. Surveyor No. 8517

This plat was prepared by McPeck Land Surveying, LLC in  
accordance with Chapter 4733-37 of the Administrative Code,  
and is intended to be used for the legal transfer of the property  
described and does not intend to describe all or any easements  
of record, nor encroachments unless otherwise intended.



**MCPEEK  
LAND  
SURVEYING, LLC**  
[www.mcpeeklandsurveying.com](http://www.mcpeeklandsurveying.com)  
email: [brian@mcpeeklandsurveying.com](mailto:brian@mcpeeklandsurveying.com)  
1705 East Pike, \* Zanesville, Oh 43701 \* 740.704.6073