

Cambridge Road
Hockton, Ohio 43812

LANDMARK SURVEYS

EARL R. DONAKER, P.S.

(614) 623-0993

1-800-842-3264

1 900 Acres

HAROLD E & JOY M SMITH

Being 1.900 acres, more or less, part of parcel 66-10-03-25-001, in the southeast quarter of section 3, in the first quarter of township 1 north, range 5 west, United States Military Lands, in the township of Union, in the county of Muskingum, in the State of Ohio, and more particularly described as follows:

Commencing at a stone found at the northeast corner of the southeast quarter of section 3;

thence, with the section line, S.01°31'19"W, 523.80' to a 5/8" steel pin found;

thence, with the property line of Nancy B. Spragg, 974/332, N.88°36'40"W, 318.00' to a 5/8" steel pin set, said 5/8" steel pin set being the TRUE POINT OF BEGINNING;

thence, through the property of Harold E. & Joy M. Smith, 1057-611, the following 5 courses;

1. thence, S.01°31'19"W, 275.00' to a 5/8" steel pin set;
2. thence, N.88°36'40"W, 170.00' to a 5/8" steel pin set;
3. thence, N.56°34'06"W, 188.48' to a 5/8" steel pin set;
4. thence, N.01°31'19"E, 145.00' to a 5/8" steel pin set;
5. thence, continuing N.01°31'19"E, 30.00' to a 5/8" steel pin set;

thence, with the property line of Nancy B. Spragg, 974/332, S.88°36'40"E, 330.00' to the TRUE POINT OF BEGINNING, containing 1.900 acres, more or less, and is subject to all easements, rights-of-way, or restrictions, whether recorded or implied.

60' EASEMENT:

Granting a 60' non-exclusive easement for ingress, egress and regress, to and from the above described 1.900 acres tract to TR 202, Fox Creek Road, the said easement being further described as follows:

Being a 60' non-exclusive easement, part of parcel 66-10-03-25-001, in the southeast quarter of section 3, in the first quarter of township 1 north, range 5 west, United States Military Lands, in the township of Union, in the county of Muskingum, in the State of Ohio, and more particularly described as follows:

Commencing at a stone found at the northeast corner of the southeast quarter of section 3;

thence, with the section line, S.01°31'19"W, 523.80' to a 5/8" steel pin found;

CONTINUED

Remove not the old landmark. Proverbs 23:10

Cambridge Road
Shoctor, Ohio 43812



LANDMARK SURVEYS

EARL R. DONAKER, P.S.

(614) 623-0993
1-800-842-3264

CONTINUED

thence, with the property line of Nancy B. Spragg, 974/332, the following 2 courses:

1. thence, N.88°36'40"W. 318.00' to a 5/8" steel pin set;
2. thence, continuing N.88°36'40"W. 330.00' to a 5/8" steel pin set, said 5/8" steel pin set being the TRUE POINT OF BEGINNING of the EASEMENT;

thence, through the property of Harold E. & Joy M. Smith, 1057-611, the following 3 courses:

1. thence, S.01°31'19"W. 30.00' to a 5/8" steel pin set;
2. thence, N.88°36'40"W. 642.28' to a 5/8" steel pin set;
3. thence, continuing N.88°36'40"W. 30.00' to a point in the centerline of Fox Creek Road, TR 202;

thence, along the centerline of Fox Creek Road, TR 202, N.02°01'24"E. 30.00' to a point;

thence, with the property line of Nancy B. Spragg, 974/332, the following 2 courses:

1. thence, S.88°36'40"E. 30.00' to a 5/8" steel pin set;
2. thence, continuing S.88°36'40"E. 642.02' to the TRUE POINT OF BEGINNING of the EASEMENT;

Bearings are based on Deed Book 1057, page 611, and are for angular calculations only. All 5/8" steel pins found are 30" long.

Pertinent documents: tax maps; deeds: 974/332, 1057-611; surveys by: Earl R. Donaker

Prior deed: 1057-611.

Description and plat by Landmark Surveys, Earl R. Donaker, Professional Surveyor, #7142, from a survey of record in the month of January in the year of our Lord one thousand nine hundred and ninety-four.

OFFICE COPY
NOT RECORDABLE

DESCRIPTION APPROVED
FOR AUDITORS TRANSFER

BY

A. L. Swineland

1-31-94

PROPERTY IS SUBJECT TO
EASEMENTS, RIGHTS-OF-WAY,
RESTRICTIONS, ERECTOR
JOINED OR IMPLIED.

7227 Cambridge Road
Coshocton, Ohio 43812

LANDMARK SURVEYS

REF: (614) 623-0993
1-800-842-3264

0 50 100 150 200
SCALE: 1" = 100'
ORIGINAL PLAT 11"X17"

Pertinent documents: Tax maps:

Deeds: 974-332, 1057-611

Surveys by: Earl R. Donaker

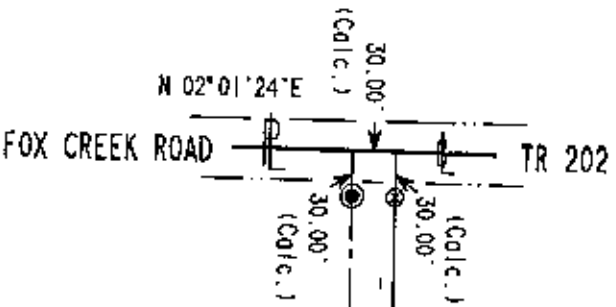
Bearings are based on D.B. 1057-611.
S. 88°36'40"E; and are for angular
calculations only.

● - All 5/8" steel pins set are 30"
long, plastic cap marked "ERD 7142"
(NOTE: PINS TO BE SET AT A LATER DATE)

⊗ - 5/8" steel pins found

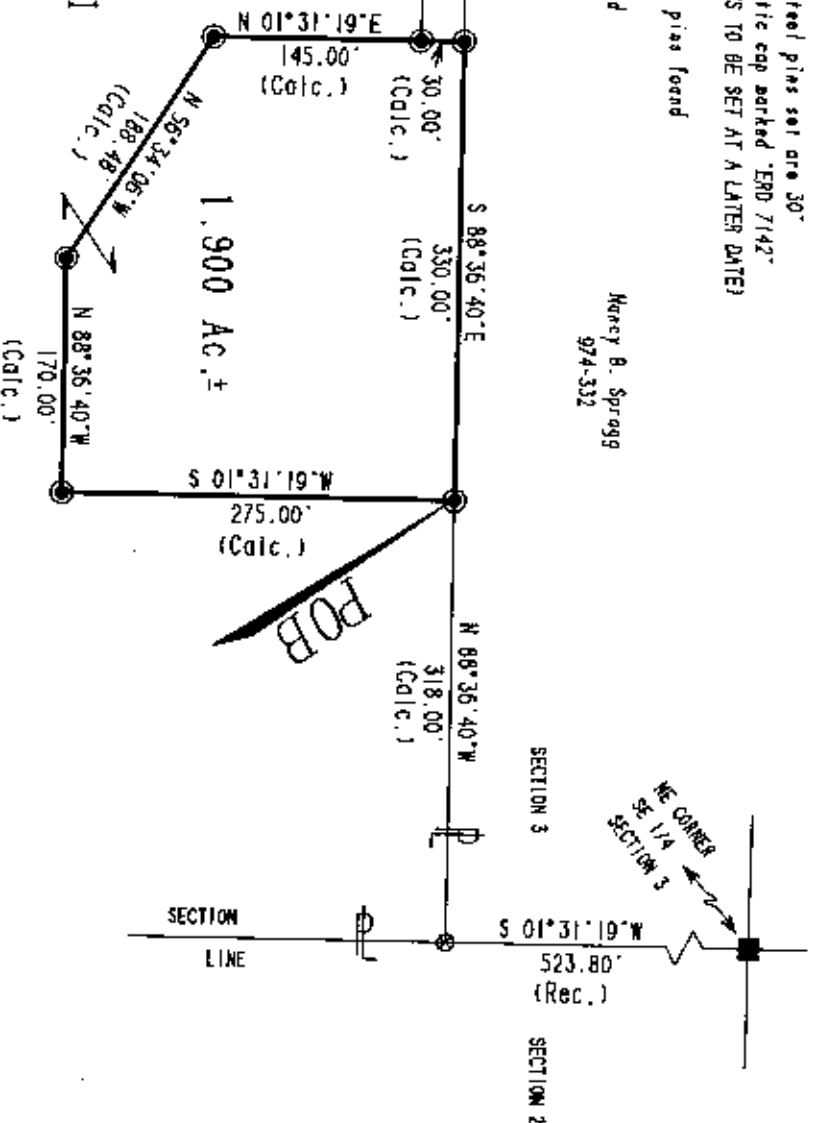
■ - stone found

Money B. Spragg
974-332



Part of Parcel #: 66-10-03-25-001

HAROLD E. & JOY M. SMITH
1057-611



DESCRIPTION APPROVED
FOR AUDITORS TRANSFER
BY: *Ed. Donaker*
1-31-94

1. Earl R. Donaker, P. S. 7142, hereby
certifies that he is a duly
licensed Professional Surveyor
under the provisions of Chapter 4733-37, Ohio
Administrative Code, and to be correct to
the best of his knowledge and belief.

"Remove not the old landmark." Proverbs 23:10

HAROLD E. & JOY M. SMITH
ACRES: 1.900
SE 1/4, SECTION 3
FIRST QUARTER, T 1 N. R 5 W.
UNITED STATES MILITARY LANDS
TOWNSHIP: UNION
COUNTY: MUSKINGUM, OHIO
DATE: JANUARY, 1994