

66-27-04-34-001 B

**BASIS OF BEARING**

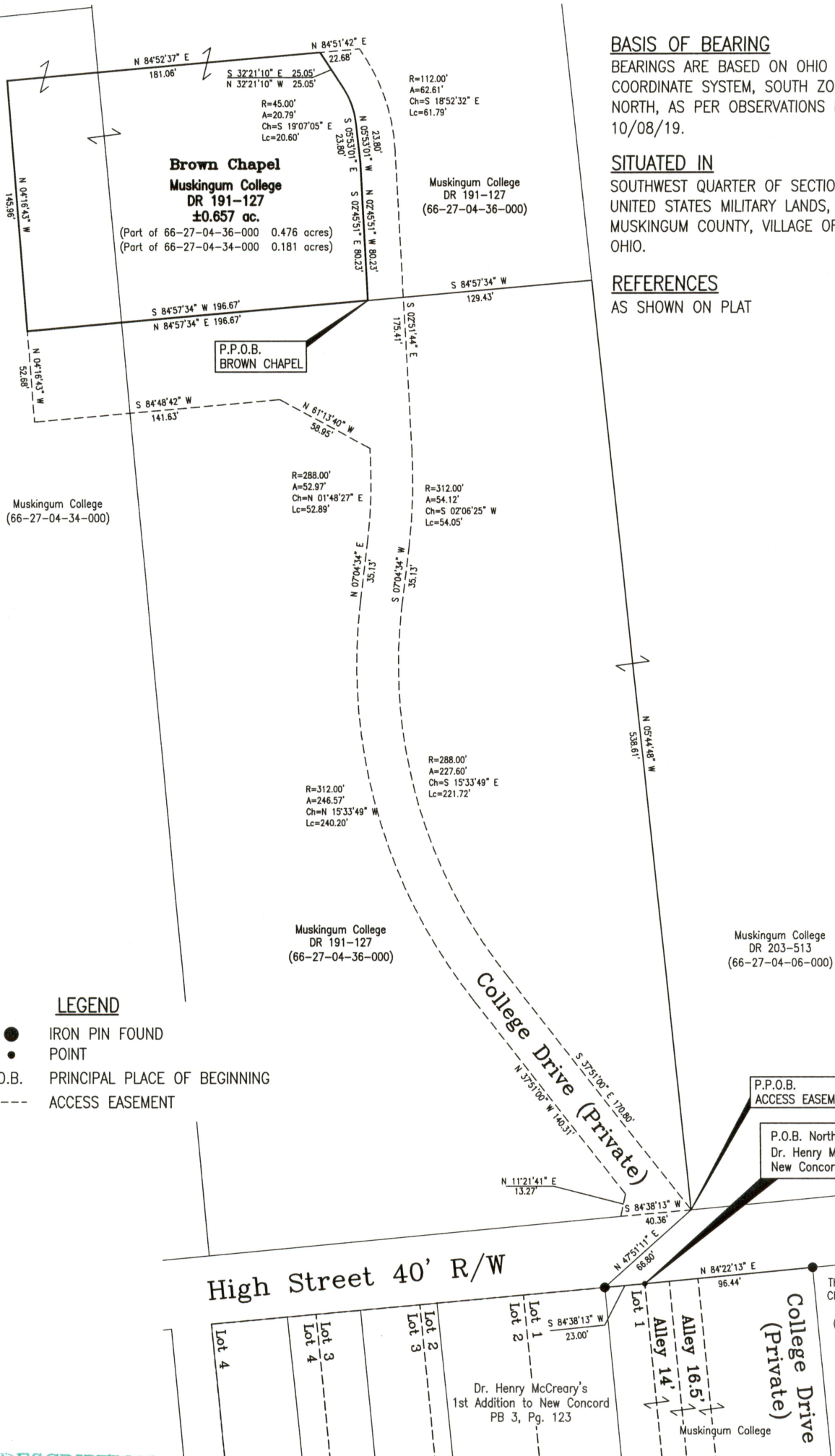
BEARINGS ARE BASED ON OHIO STATE PLANE COORDINATE SYSTEM, SOUTH ZONE, NAD83, GRID NORTH, AS PER OBSERVATIONS MADE ON 10/08/19.

**SITUATED IN**

SOUTHWEST QUARTER OF SECTION 1, T-1, R-5, UNITED STATES MILITARY LANDS, UNION TOWNSHIP, MUSKINGUM COUNTY, VILLAGE OF NEW CONCORD, OHIO.

**REFERENCES**

AS SHOWN ON PLAT



**LEGEND**

- IRON PIN FOUND
- POINT
- P.P.O.B. PRINCIPAL PLACE OF BEGINNING
- ACCESS EASEMENT

**DESCRIPTION**

APPROVED

By: *[Signature]*



**Linn Engineering, Inc.** 740-452-7434  
 Civil Engineering Consultants  
 P.O. Box 2086 Zanesville, Ohio 43702-2086

Timothy H. Linn, PS *u/u/19*  
 Reg. Surveyor No. 7113  
 Project No. Musk-2019 Chapel  
 Date

**OFFICE COPY**  
**NOT RECORDABLE**