

# Baseline Surveying, Inc.

Land Surveying and Construction Layout

3010 East Pike  
Zanesville, OH 43701

Email: bei@rohio.com  
Telephone (740) 453-4850

**THENCE WITH THE NORTH LINE OF THE SAID SOUTHWEST QUARTER (SOUTH LINE OF TRACT 1 AS CONVEYED TO KENNETH R. JOHNSTON IN DEED VOLUME 1154, PAGE 116, AND THE SOUTH LINE OF TWO PARCELS CONVEYED TO RITA ALLEN IN O.R. VOLUME 2754, PAGE 492, AND THE SOUTH LINE OF A PARCEL CONVEYED TO JAMES M. AND JOYCE A. GUYER IN O. R. VOLUME 2786, PAGE 492), SOUTH 87 DEGREES 36 MINUTES 36 SECONDS EAST 1525.64 FEET TO AN IRON PIN SET, PASSING AN EXISTING IRON PIN (5/8 INCH REBAR WITH "BIEDENBACH" CAP) AT 1089.36 FEET AND AN EXISTING IRON PIN (5/8 INCH REBAR WITH "HARKNESS" CAP) AT 1489.36 FEET;**

**THENCE LEAVING THE SAID QUARTER SECTION LINE AND TRAVERSING THROUGH THE ABOVE SAID GRANT PARCEL THE FOLLOWING THREE COURSES AND DISTANCES:**

1. SOUTH 02 DEGREES 30 MINUTES 42 SECONDS EAST 433.05 FEET TO AN IRON PIN SET;
2. SOUTH 29 DEGREES 04 MINUTES 22 SECONDS EAST 220.47 FEET TO AN IRON PIN SET;
3. SOUTH 01 DEGREES 02 MINUTES 07 SECONDS EAST 124.64 FEET TO A POINT, SAID POINT BEING THE PLACE OF BEGINNING FOR THE EASEMENT HEREIN INTENDED TO BE DESCRIBED;

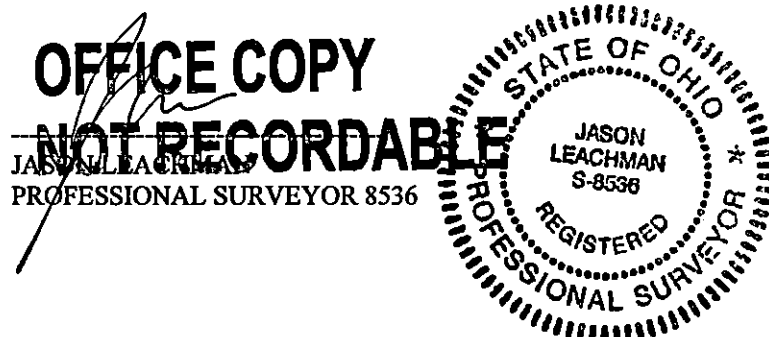
**THENCE CONTINUING INTO THE SAID GRANT PARCEL, THE FOLLOWING TEN COURSES AND DISTANCES:**

1. NORTH 82 DEGREES 35 MINUTES 52 SECONDS EAST 562.23 FEET TO A POINT;
2. SOUTH 84 DEGREES 18 MINUTES 50 SECONDS EAST 219.12 FEET TO A POINT;
3. SOUTH 68 DEGREES 17 MINUTES 45 SECONDS EAST 83.64 FEET TO A POINT;
4. SOUTH 83 DEGREES 09 MINUTES 25 SECONDS EAST 111.19 FEET TO A POINT IN THE CENTER OF SUNDALE ROAD (COUNTY ROAD 105);
5. WITH THE CENTER OF THE SAID ROAD, SOUTH 15 DEGREES 29 MINUTES 48 SECONDS WEST 50.58 FEET TO A POINT;
6. LEAVING THE SAID ROAD, NORTH 83 DEGREES 09 MINUTES 25 SECONDS WEST 110.10 FEET TO A POINT;
7. NORTH 68 DEGREES 17 MINUTES 45 SECONDS WEST 83.13 FEET TO A POINT;
8. NORTH 84 DEGREES 18 MINUTES 50 SECONDS WEST 206.35 FEET TO A POINT;
9. SOUTH 82 DEGREES 35 MINUTES 52 SECONDS WEST 562.08 FEET TO AN IRON PIN SET;
10. NORTH 01 DEGREES 02 MINUTES 07 SECONDS WEST 50.31 FEET TO THE PLACE OF BEGINNING.

ALL IRON PINS SET ARE 5/8 INCH X 30 INCH REBAR WITH PLASTIC IDENTIFICATION CAPS (BASELINE PS6923-PS8536).

BEARINGS ARE BASED ON OHIO STATE PLANE COORDINATE SYSTEM 1983 (2011), OHIO SOUTH ZONE, GRID, DERIVED FROM A GPS OBSERVATION

I, JASON LEACHMAN, PS 8536, HEREBY CERTIFY TO THE BEST OF MY KNOWLEDGE AND BELIEF THE SURVEY AND DESCRIPTION TO BE CORRECT AS PREPARED BY ME, THIS 10TH DAY OF DECEMBER 2021, FROM A FIELD SURVEY COMPLETED ON THE 7TH DAY OF DECEMBER 2021.



DESCRIPTION  
APPROVED

By: Jason Leachman