

ReSurvey

SITUATED IN

The State of Ohio, County of Muskingum  
Township of Washington, and being a part  
Lot 2 of Underwood's Reservation (DB E, Pg. 62 &  
PB "A-O", Pg. 55).

BASIS OF BEARING

Bearings are based on State Plane Grid Coordinates,  
NAD83, Ohio South, per GPS Observation.

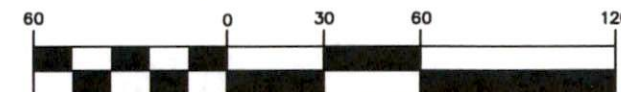
REFERENCES

\* As Noted on Plat  
[www.muskingumcountyauditor.org](http://www.muskingumcountyauditor.org)  
[www.mceo.org](http://www.mceo.org)  
<http://recorder.muskingumcounty.org>

LEGEND

- ▲ Railroad Spike Found
- △ Railroad Spike Set
- Iron Pin Found
- Pipe Found w/cap
- ⊠ Stone Found
- Z- Property Hook
- ⊙ Iron Pin Set

GRAPHIC SCALE

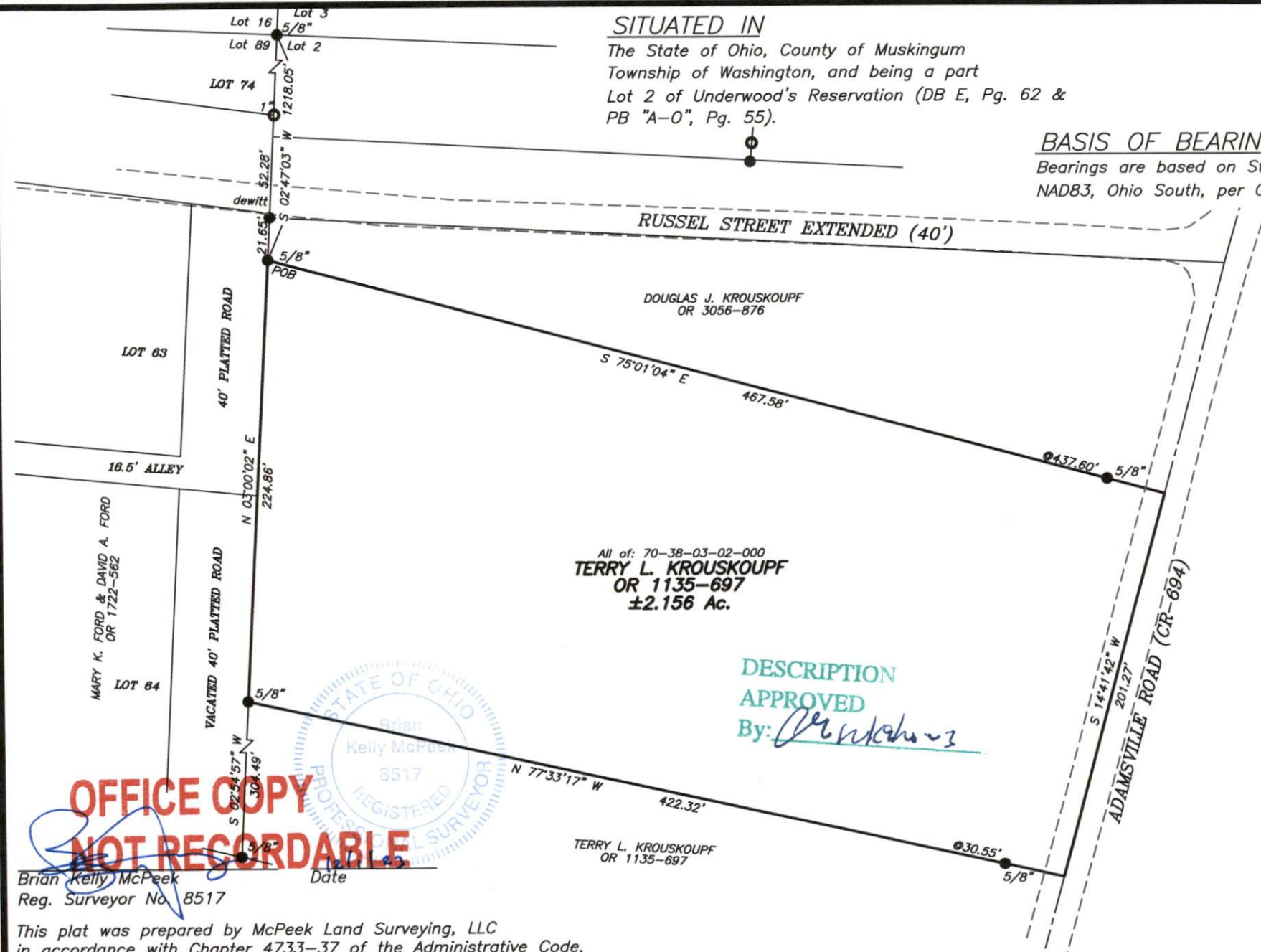


( IN FEET )

1 inch = 60 ft.



[www.mcpeeklandsurveying.com](http://www.mcpeeklandsurveying.com)  
email: [brian@mcpeeklandsurveying.com](mailto:brian@mcpeeklandsurveying.com)  
1705 East Pike, \* Zanesville, Oh 43701 \* 740.704.6073



OFFICE COPY  
NOT RECORDABLE

Brian Kelly McPeck  
Reg. Surveyor No. 8517

This plat was prepared by McPeek Land Surveying, LLC  
in accordance with Chapter 4733-37 of the Administrative Code,  
and is intended to be used for the legal transfer of the property  
described and does not intend to describe all or any easements  
of record, nor encroachments unless otherwise intended.