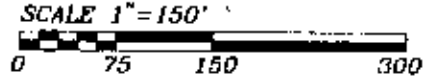


SURVEY FOR TED QUINN

AUDITORS PARCEL NUMBER
71-70-60-02-16-004 (PART)



LEGEND

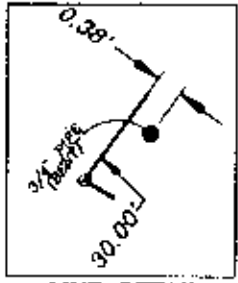
- IRON PIN FOUND
- ⊙ IRON PIN SET
(5/8" REBAR W/CAP)
- ANGLE POINTS
- ✕ MAG NAIL SET

RESEARCH:

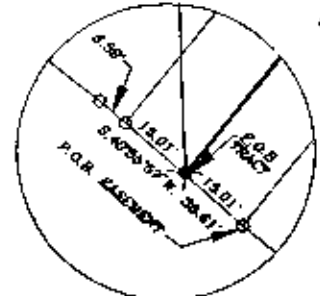
MUSKINGUM COUNTY TAX MAP
PREVIOUS SURVEY PLAT 20.40 ± ACRES
PREVIOUS SURVEY PLAT 3.41 ± ACRES

JOHN S. & CAROL ANN
ACKERS
D. B. 1126, PG. 883

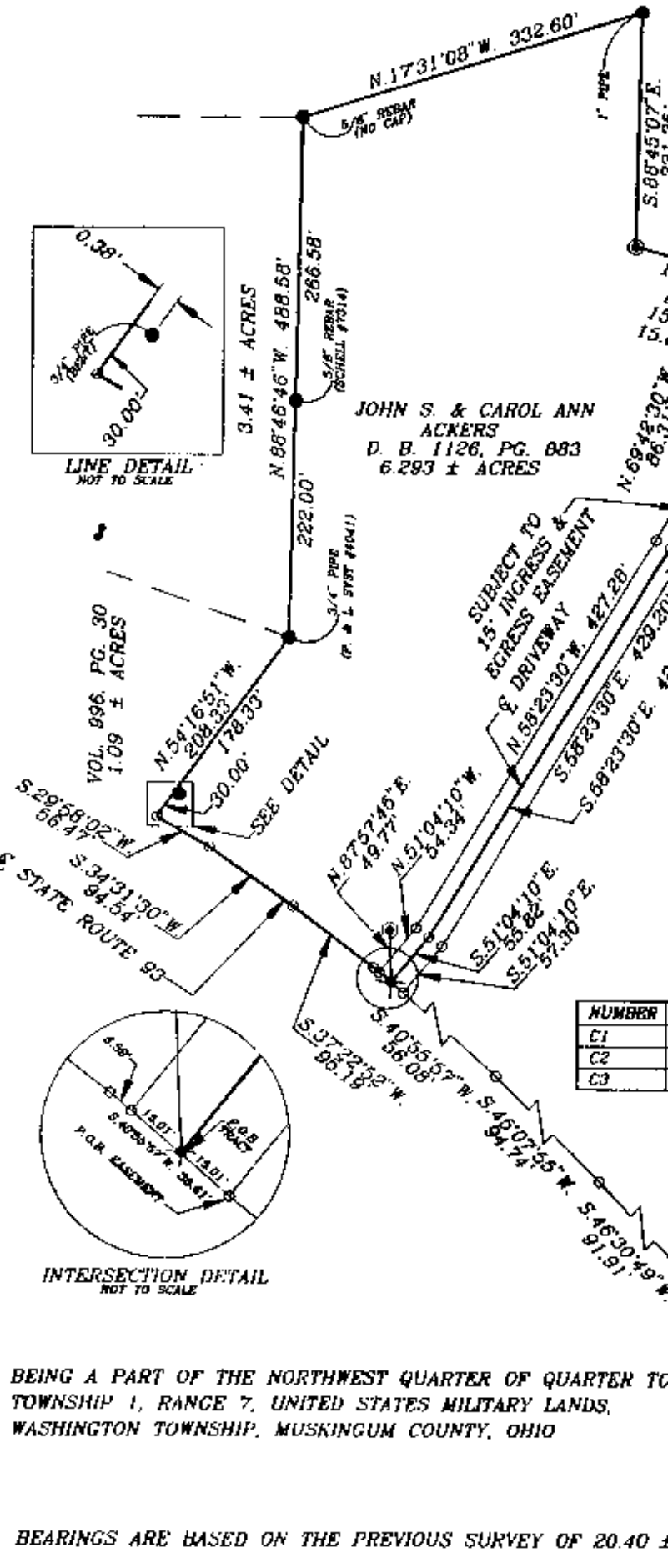
NUMBER	CHORD BEARING	CHORD LENGTH	ARC LENGTH	RADIUS
C1	S.64°03'00"E	177.47'	177.76'	900.00'
C2	N.64°03'00"W	174.52'	174.00'	885.00'
C3	S.64°03'00"E	180.43'	180.72'	915.00'



LINE DETAIL
NOT TO SCALE



INTERSECTION DETAIL
NOT TO SCALE



BEING A PART OF THE NORTHWEST QUARTER OF QUARTER TOWNSHIP 4,
TOWNSHIP 1, RANGE 7, UNITED STATES MILITARY LANDS,
WASHINGTON TOWNSHIP, MUSKINGUM COUNTY, OHIO

BEARINGS ARE BASED ON THE PREVIOUS SURVEY OF 20.40 ± ACRES

DESCRIPTION APPROVED
FOR AUDITORS TRANSFER
BY [Signature]
3-4-97

I HEREBY CERTIFY TO THE BEST OF MY
KNOWLEDGE AND BELIEF THE ABOVE PLAT AND
SURVEY TO BE CORRECT AS PREPARED BY ME.
THIS 10th DAY OF FEBRUARY, 1997.

OFFICE COPY
NOT RECORDABLE

W.J. BIEDENBACH & ASSOC.
SURVEYING & MAPPING
ZANESVILLE, OHIO
(614) 453-4850

DRAWN BY: AJS	DATE: 02-10-97
SCALE: 1"=150'	CHECKED BY: WJB
JOB NO: 4106	DRAWING NO: D:\4106\4106