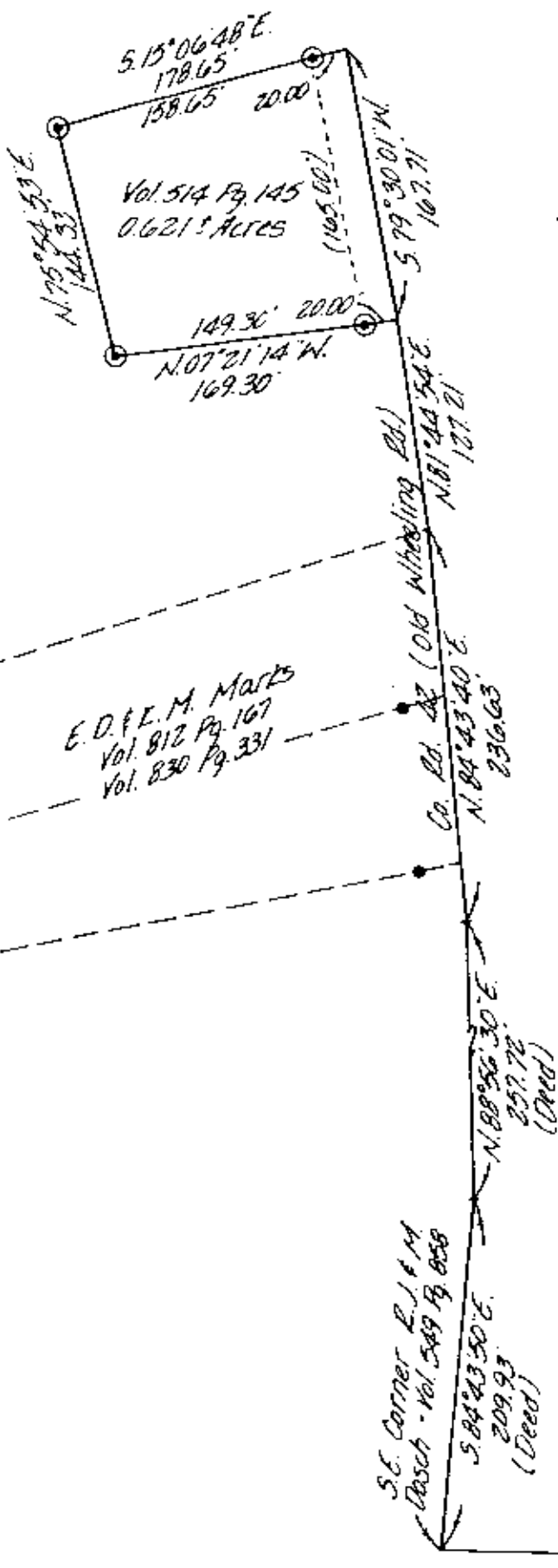


Bearings are based on the previous surveys of 0.88± Ac. & 0.93± Ac. tracts conveyed to E. D. & L. M. Marks - D. B. Vol. 812 Pg. 167 & Vol. 830 Pg. 331.

- ~ Existing Iron Pin (3/8" rebar)
- ⊙ ~ Iron Pin Set (3/8" x 30" rebar w/ plastic i.d. cap)

Research:
 Deed - Vol. 514 Pg. 145 Deed - Vol. 639 Pg. 119
 Deed - Vol. 812 Pg. 167 Deed - Vol. 689 Pg. 249
 Deed - Vol. 830 Pg. 331 Musc. Co. Tax Maps

A. Marsh - Vol. 514 Pg. 145



V. B. & W. Foster
Vol. 530 Pg. 52

Southeast Corner
 Qtr. Twp. 4
 1868.5' (Deed)
 West
 South line of Qtr. Twp. 4

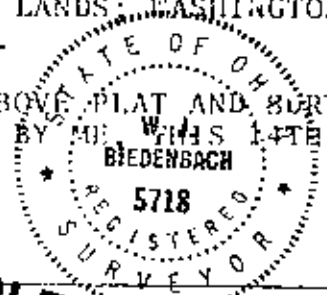
E. D. & L. M. Marks
Vol. 812 Pg. 167
Vol. 830 Pg. 331

S.E. Corner R. J. & M. Bosch - Vol. 549 Pg. 858

BEING A PART OF A TRACT CONVEYED TO ANNABELLE MARSH AS RECORDED IN DEED BOOK VOLUME 514 PAGE 145 OF THE MUSKINGUM COUNTY DEED RECORDS: SITUATED IN THE 4TH QUARTER OF TOWNSHIP 1, RANGE 7, OF THE UNITED STATES MILITARY LANDS, WASHINGTON TOWNSHIP, MUSKINGUM COUNTY, OHIO.

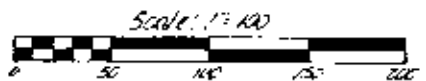
I HEREBY CERTIFY THE ABOVE PLAT AND SURVEY TO BE CORRECT AS PREPARED BY ME THIS 14TH DAY OF OCTOBER

OFFICE COPY NOT RECORDABLE



W. J. BIEDENBACH, REGISTERED SURVEYOR #5718

Auditor's Parcel No. - 71-01661



W. J. BIEDENBACH & ASSOC. Surveying & Mapping 3120 Lisa Ln. Zanesville, Ohio 43701 (614) 453-4850	
Drawn by: <i>WJ</i>	Date: 10-14-85
Scale: 1"=100'	Checked by: <i>WJ</i>