



www.mcpeeklandsurveying.com LLC
email: brian@mcpeeklandsurveying.com
340 Robin Hood Ln., * Zanesville, Oh 43701 * 740.704.6073

**Larry L. McCutcheon, Trustee of the Larry McCutcheon Trust
dated May 15, 2009 & Sandra J. McCutcheon, Trustee
of the Sandra J. McCutcheon Trust dated May 15, 2009.
OR 2219-756, OR 2219-758 & OR 2219-762
Total 223.578 Ac.**

Situated in the State of Ohio, County of Muskingum, Township of Wayne, being part of Section 6 and Section 7, Township 13, Range 12, Congress Lands East of the Scioto River and being all of the lands now owned by Larry L. McCutcheon, Trustee of the Larry McCutcheon Trust, dated May 15, 2009 & Sandra J. McCutcheon, Trustee of the Sandra J. McCutcheon Trust dated May 15, 2009 (OR 2219-756, OR 2219-758 & OR 2219-762) of the Muskingum County Recorders Office and more particularly described as follows:

Beginning at the center of said Section 6, and going with the north line of the SE Quarter of said section, S 88°30'33" E, 696.03 feet to a point in the center of an old tree stump, said point is referenced by an iron pin set which bears S 36°22'20" E, 2.79 feet;

thence leaving leaving said north line of said SE Quarter and with the east line of the lands now owned by Dale L. Gordon (DR 991-209), N 07°42'52" E, 252.96 feet to an iron pin set on the north side of Clay Pike (CR-5); thence with the said north line of Clay Pike the following six (6) courses:

1. thence S 80°23'26" E, 195.28 feet to an iron pin set;
2. thence N 88°45'29" E, 131.37 feet to an iron pin set;
3. thence N 85°03'23" E, 172.39 feet to an iron pin set;
4. thence N 87°23'29" E, 158.02 feet to an iron pin set;
5. thence N 76°51'18" E, 58.70 feet to a point;
6. thence N 67°13'55" E, 12.41 feet to a point, said point is referenced by an iron pin set which bears S 29°31'48" W, 55.14 feet;

thence leaving said north line of Clay Pike and going S 08°51'44" E, 285.34 feet to an iron pin set on the north line of the SE Quarter of said Section 6 where it meets the west side of Boggs Run;

thence with said north line, S 88°30'33" E, 39.78 feet to a point in the center of said Boggs Run;

thence with the common line of said McCutcheon's lands and the lands now owned by Myron Hopkins Powelson, III, William Patrick Powelson & Mark Alan Powelson and the center of said Boggs Run the following one hundred and nine (109) courses:

1. thence S 04°17'04" E, 42.46 feet to a point;
2. thence S 10°47'50" E, 48.58 feet to a point;
3. thence S 21°35'16" W, 17.44 feet to a point;
4. thence S 74°05'43" W, 22.56 feet to a point;
5. thence N 87°27'34" W, 34.22 feet to a point;
6. thence S 67°32'35" W, 18.94 feet to a point;
7. thence S 17°10'56" W, 18.56 feet to a point;
8. thence S 10°30'36" E, 26.22 feet to a point;
9. thence S 00°13'19" W, 30.10 feet to a point;
10. thence S 27°22'06" W, 22.33 feet to a point;
11. thence S 24°48'10" W, 16.97 feet to a point;
12. thence S 01°37'38" E, 20.54 feet to a point;
13. thence S 36°29'50" E, 25.11 feet to a point;
14. thence N 81°55'10" E, 19.09 feet to a point;
15. thence S 51°08'48" E, 21.57 feet to a point;
16. thence S 28°54'33" E, 26.79 feet to a point;
17. thence S 25°39'33" W, 39.61 feet to a point;
18. thence S 40°39'33" W, 25.07 feet to a point;
19. thence S 64°47'56" W, 13.15 feet to a point;
20. thence N 62°04'35" W, 13.20 feet to a point;
21. thence N 13°31'42" W, 31.92 feet to a point;
22. thence N 32°44'07" W, 13.59 feet to a point;
23. thence S 76°30'15" W, 15.00 feet to a point;
24. thence S 29°17'39" W, 51.51 feet to a point;

25. thence S 13°51'40" E, 37.01 feet to a point;
26. thence S 11°55'28" W, 19.20 feet to a point;
27. thence S 49°20'27" W, 25.07 feet to a point;
28. thence S 86°03'17" W, 10.17 feet to a point;
29. thence N 79°57'29" W, 11.37 feet to a point;
30. thence S 42°59'07" W, 16.43 feet to a point;
31. thence S 02°53'29" W, 11.57 feet to a point;
32. thence S 31°38'41" E, 23.57 feet to a point;
33. thence S 41°23'10" E, 15.71 feet to a point;
34. thence S 04°18'16" E, 10.88 feet to a point;
35. thence S 45°08'27" W, 33.58 feet to a point;
36. thence S 26°19'24" W, 12.37 feet to a point;
37. thence S 15°10'43" W, 38.32 feet to a point;
38. thence S 17°41'33" W, 34.17 feet to a point;
39. thence S 31°55'15" W, 16.77 feet to a point;
40. thence S 45°25'37" W, 55.36 feet to a point;
41. thence S 25°47'46" W, 15.55 feet to a point;
42. thence S 05°25'06" E, 43.25 feet to a point;
43. thence S 01°47'24" E, 18.68 feet to a point;
44. thence S 09°03'51" E, 30.36 feet to a point;
45. thence S 25°04'03" W, 31.94 feet to a point;
46. thence S 06°11'38" W, 30.28 feet to a point;
47. thence S 03°29'33" E, 24.90 feet to a point;
48. thence S 23°31'56" W, 15.78 feet to a point;
49. thence S 16°17'06" E, 10.82 feet to a point;
50. thence S 63°47'39" E, 16.65 feet to a point;
51. thence S 38°26'35" E, 14.45 feet to a point;
52. thence S 31°20'32" E, 36.34 feet to a point;
53. thence S 11°48'47" E, 18.24 feet to a point;
54. thence S 13°52'11" W, 19.47 feet to a point;
55. thence S 64°27'53" W, 31.94 feet to a point;
56. thence S 52°26'43" W, 29.29 feet to a point;
57. thence S 40°33'32" W, 17.05 feet to a point;
58. thence S 30°03'09" W, 18.87 feet to a point;
59. thence S 68°03'05" W, 8.43 feet to a point;
60. thence N 70°20'46" W, 13.88 feet to a point;
61. thence N 45°29'03" W, 29.29 feet to a point;
62. thence N 81°00'39" W, 20.91 feet to a point;
63. thence S 56°59'49" W, 26.99 feet to a point;
64. thence S 31°23'58" W, 31.58 feet to a point;
65. thence S 05°56'49" E, 11.26 feet to a point;
66. thence S 24°21'59" E, 28.56 feet to a point;
67. thence S 16°37'34" W, 35.07 feet to a point;
68. thence S 22°27'06" W, 30.55 feet to a point;
69. thence S 16°24'49" W, 15.69 feet to a point;
70. thence S 13°50'46" W, 17.06 feet to a point;
71. thence S 53°36'56" W, 13.77 feet to a point;
72. thence S 70°10'04" W, 22.70 feet to a point;
73. thence S 38°12'40" W, 20.94 feet to a point;
74. thence S 11°34'12" W, 15.12 feet to a point;
75. thence S 34°47'46" E, 41.91 feet to a point;
76. thence S 09°56'11" E, 16.23 feet to a point;
77. thence S 28°38'39" W, 15.82 feet to a point;
78. thence N 86°01'20" W, 35.32 feet to a point;
79. thence S 80°18'23" W, 33.26 feet to a point;
80. thence S 42°47'51" W, 25.76 feet to a point;
81. thence S 30°06'28" W, 38.84 feet to a point;
82. thence S 64°08'01" W, 17.12 feet to a point;
83. thence N 86°22'01" W, 14.73 feet to a point;
84. thence S 88°19'39" W, 15.99 feet to a point;
85. thence S 53°48'46" W, 21.54 feet to a point;
86. thence S 19°00'39" W, 14.69 feet to a point;
87. thence S 26°42'53" E, 19.98 feet to a point;
88. thence S 13°10'59" E, 26.60 feet to a point;
89. thence S 18°16'04" W, 12.66 feet to a point;
90. thence S 59°36'35" W, 35.98 feet to a point;
91. thence S 00°56'21" W, 14.24 feet to a point;
92. thence S 34°34'27" E, 31.46 feet to a point;
93. thence S 15°56'43" E, 13.59 feet to a point;
94. thence S 22°37'12" W, 10.62 feet to a point;
95. thence S 67°35'41" W, 14.39 feet to a point;

96. thence S 58°10'21" W, 11.95 feet to a point;
97. thence S 26°52'41" W, 9.55 feet to a point;
98. thence S 26°33'54" E, 13.31 feet to a point;
99. thence S 41°08'31" E, 42.91 feet to a point;
100. thence N 74°47'51" E, 11.12 feet to a point;
101. thence N 59°09'12" E, 19.57 feet to a point;
102. thence N 77°54'19" E, 21.72 feet to a point;
103. thence N 56°57'35" E, 17.12 feet to a point;
104. thence S 37°51'04" E, 24.53 feet to a point;
105. thence S 02°29'22" E, 34.92 feet to a point;
106. thence S 34°37'03" W, 59.97 feet to a point;
107. thence S 18°20'40" W, 23.35 feet to a point;
108. thence S 07°52'21" E, 47.70 feet to a point;
109. thence S 10°06'43" W, 18.61 feet to a point;

thence leaving the center of said Boggs Run and continuing with the common line of said McCutcheon and Powelson's lands the following five (5) courses:

1. thence S 89°53'25" E, 35.41 feet to a point;
2. thence N 01°38'43" E, 33.02 feet to an iron pin found;
3. thence S 88°16'11" E, 395.11 feet to an iron pin found;
4. thence S 00°39'01" W, 46.20 feet to an iron pin found;
5. thence S 88°10'37" E, 1190.13 feet to an iron pin found on the common line of Wayne Township & Salt Creek Township;

thence with said township line, leaving Section 6 and passing into Section 7, S 02°16'36" W, 1295.49 feet to a pipe found on the northeast corner of the lands now owned by Dwight W. Taylor (OR 2595-491), passing an iron pin found at 441.75 feet, 5.04 feet left of line;

thence with the south line of said McCutcheon's lands the following two (2) courses:

1. thence S 89°20'24" W, 549.47 feet to a pipe found;
2. thence S 89°22'55" W, 868.13 feet to a spike set;

thence with the west line of the lands now owned by Randall A. Kopchak & Teresa D. Kopchak (DR 1514-580), S 22°10'25" E, 1035.37 feet to a spike set in the center of Three Towers Road (T-389);

thence with the center of said Three Towers Road, S 60°45'26" W, 407.75 feet to a spike set on the most southern point of said McCutcheon's lands, said spike is referenced by an axle found which bears S 81°32'28" W, 5.24 feet;

thence with McCutcheon's southwesterly line the following nine (9) courses:

1. N 30°49'03" W, 25.00 feet to a point;
2. N 31°17'35" W, 289.14 feet to a point;
3. N 31°16'35" W, 587.55 feet to an iron pin found;
4. thence with a curve turning to the left with an arc length of 796.71', with a radius of 2936.52', with a chord bearing of N 39°02'56" W, with a chord length of 794.27', to an iron pin found;
5. thence N 46°49'17" W, 366.69 feet to an iron pin found;
6. thence S 02°32'18" W, 65.89 feet to an iron pin found;
7. thence N 46°47'21" W, 910.23 feet to an iron pin found;
8. thence N 46°45'34" W, 340.85 feet to an iron pin found;
9. thence with a curve turning to the left with an arc length of 713.82', with a radius of 964.44', with a chord bearing of N 66°00'26" W, with a chord length of 697.64', to a corner post on the southeast corner of the lands now owned by Laura M. Blackford (OR 2460-757);

thence with the common line of said McCutcheon and Blackford's lands, N 02°18'28" E, 1660.23 feet to a point in the water on south line of the lands now owned by Robert D. Fuller & Donna J. Fuller (DR 708-337), passing an iron pin set at 0.28 feet and an iron pin set at 1654.29 feet;

thence with the south line of said Fuller's lands, also being the north line of the SW Quarter of said Section 6, thence S 87°28'11" E, 1578.15 feet to the place of beginning containing a total of 223.578 acres, more or less, subject to all legal highways and easements of record.

All bearings described herein are based on the Ohio State Plane Grid Coordinates, NAD83, Ohio South per GPS Observation.

The above described 223.578 acre survey is based on a field survey made by Brian K. McPeck, PS 8517 of McPeck Land Surveying, LLC on March 1st, 2016

Parcel No.

All of: 73-15-06-21-000 (+/- 22.501 Ac.)
 All of: 73-15-06-22-000 (+/- 36.913 Ac.)
 All of: 73-15-06-23-000 (+/- 50.953 Ac.)
 All of: 73-15-06-24-000 (+/- 75.866 Ac.)
 All of: 73-15-06-35-000 (+/- 4.268 Ac.)
 All of: 73-15-07-03-000 (+/- 33.077 Ac.)
 Total (+/- 223.578 Ac.)

**OFFICE COPY
NOT RECORDABLE**

Brian Kelly McPeck, PS 8517

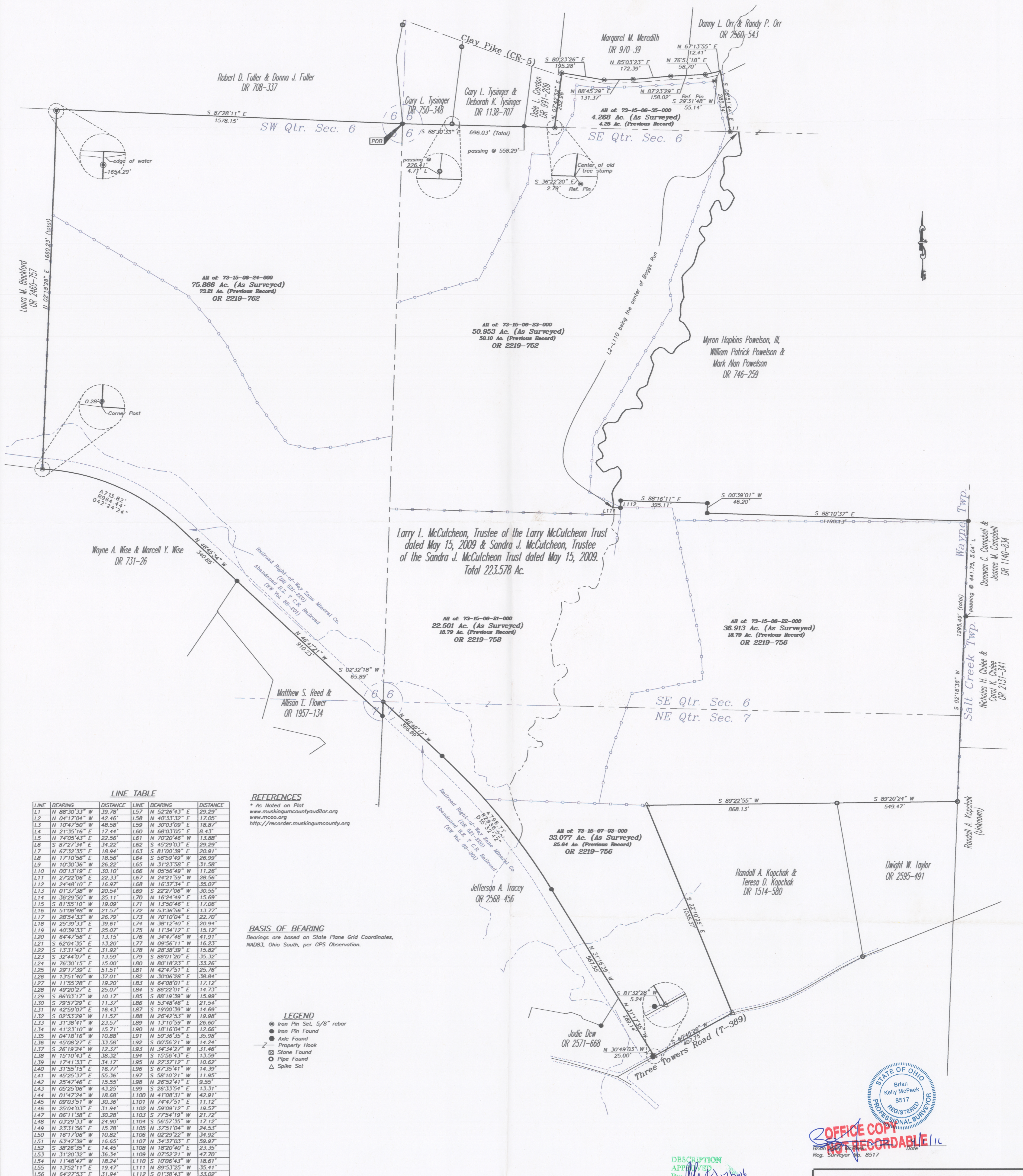


Date

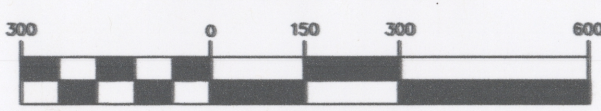
4/1/16

DESCRIPTION
APPROVED BY: [Signature] 4/1/2016

~ SITUATED IN ~
THE STATE OF OHIO, COUNTY OF MUSKINGUM, TOWNSHIP OF WAYNE.
BEING PART OF SECTION 6 AND SECTION 7, TOWNSHIP 13, RANGE 12,
CONGRESS LANDS EAST OF THE SCIOTO RIVER.



GRAPHIC SCALE



(IN FEET)
1 inch = 300 ft.



MCPEEK LAND SURVEYING LLC
www.mcpeeklandsurveying.com
email: brian@mcpeeklandsurveying.com
340 Robin Hood Ln., * Zanesville, Oh 43701 * 740.704.6073