

SITUATED IN

The State of Ohio, County of Muskingum, City of Zanesville and being all of Lots 7, 8, 11, 12, 13, 14, 15, 16 and part of Lots 9 and 17 in the Lands of WM. N. Merrick and Others (an unrecorded plat referenced in certificate of transfer DR 290-527).

BASIS OF BEARING

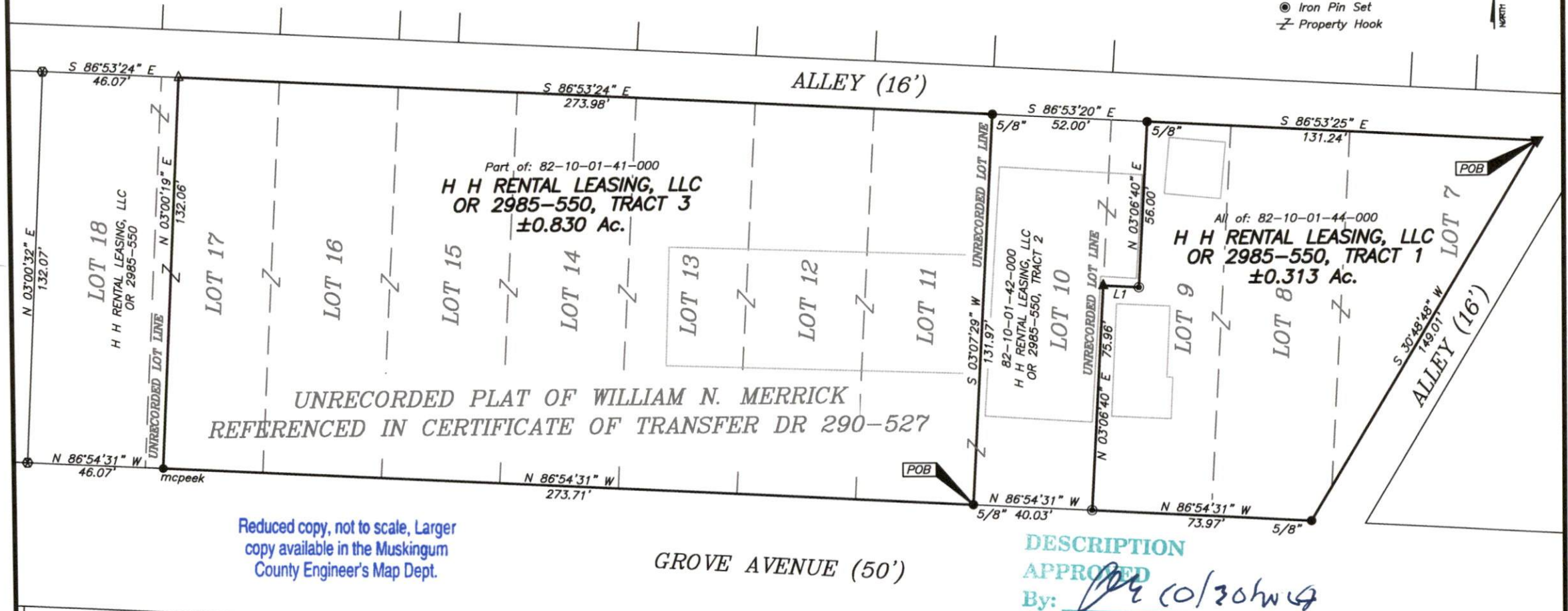
Bearings are based on State Plane Grid Coordinates, NAD83, Ohio South, per GPS Observation.

REFERENCES

* As Noted on Plat
www.muskingumcountyauditor.org
www.mceo.org
http://recorder.muskingumcounty.org

LEGEND

- Unmarked Point
- Iron Pin Found
- ⊗ Axle Found
- ▼ Railroad Spike Found
- ▲ PK Nail Set
- △ PK Nail Found
- ⊙ Iron Pin Set
- Z- Property Hook



Reduced copy, not to scale, Larger copy available in the Muskingum County Engineer's Map Dept.

GROVE AVENUE (50')

DESCRIPTION

APPROVED
By: [Signature] 10/30/14

**OFFICE COPY
NOT RECORDABLE**

Brian Kelly McPeck
Reg. Surveyor No. 8517

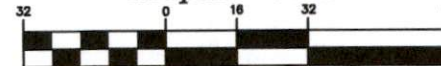
This plat was prepared by McPeck Land Surveying, LLC in accordance with Chapter 4733-37 of the Administrative Code, and is intended to be used for the legal transfer of the property described and does not intend to describe all or any easements of record, nor encroachments unless otherwise intended.



LINE TABLE

LINE	BEARING	DISTANCE
L1	S 86°53'20" E	12.00'

Graphic Scale



(IN FEET)
1 inch = 32 ft.

