

SITUATED IN

The State of Ohio, County of Muskingum, City of Zanesville, all of Lots 19 & 20 and vacated portions of Kimble Street in the Linn Addition to the Lindberg Allotment (PB 7, Pg. 32).

BASIS OF BEARING

Bearings & distances are based on State Plane Grid Coordinates, NAD83, Ohio South, per GPS Observation.

ReSurvey

MARY E. MURPHY & WILLIAM MURPHY, JR.

OR 2272-520

Total ±0.197 Ac.

DESCRIPTION

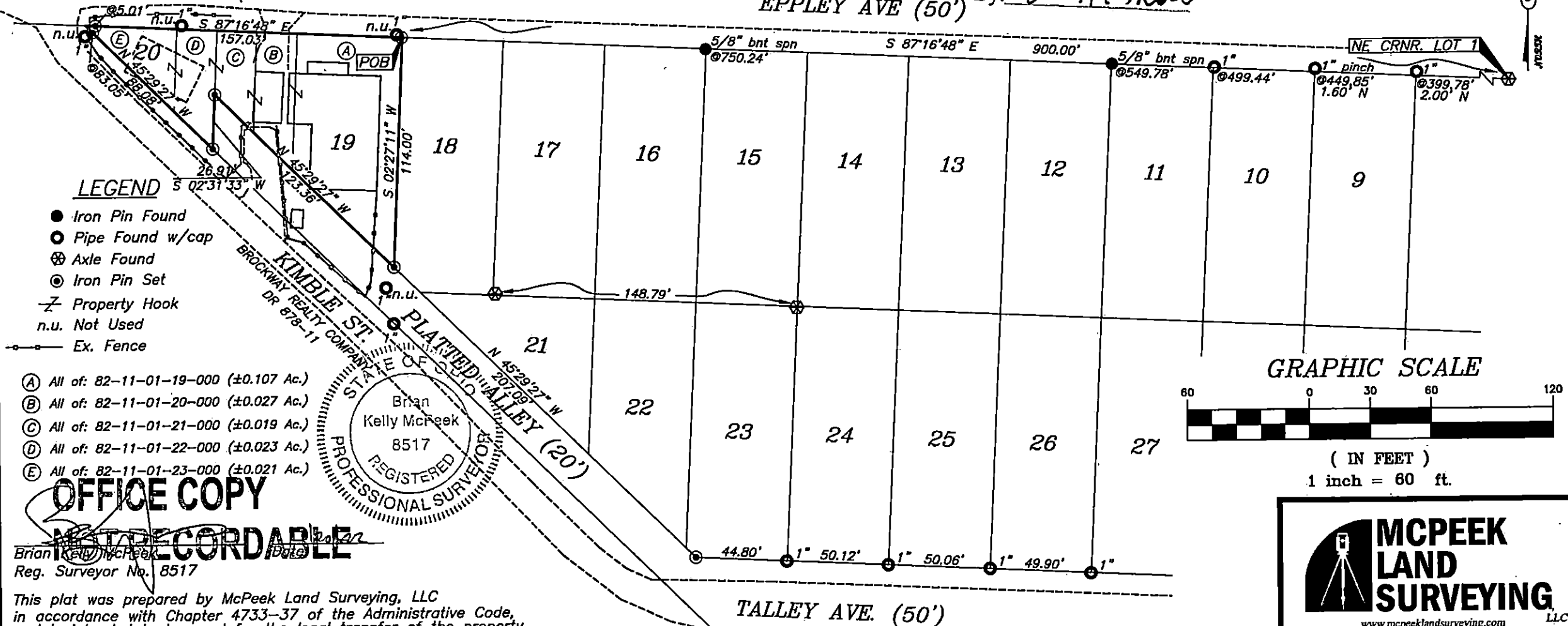
APPROVED

By: *[Signature]*

REFERENCES

* As Noted on Plat
www.muskingumcountyauditor.org
www.mceo.org
http://recorder.muskingumcounty.org

EPPLEY AVE (50')



MCPEEK LAND SURVEYING

www.mcpeeklandsurveying.com
email: brian@mcpeeklandsurveying.com
340 Robin Hood Ln., Zanesville, Oh 43701 • 740.704.6073