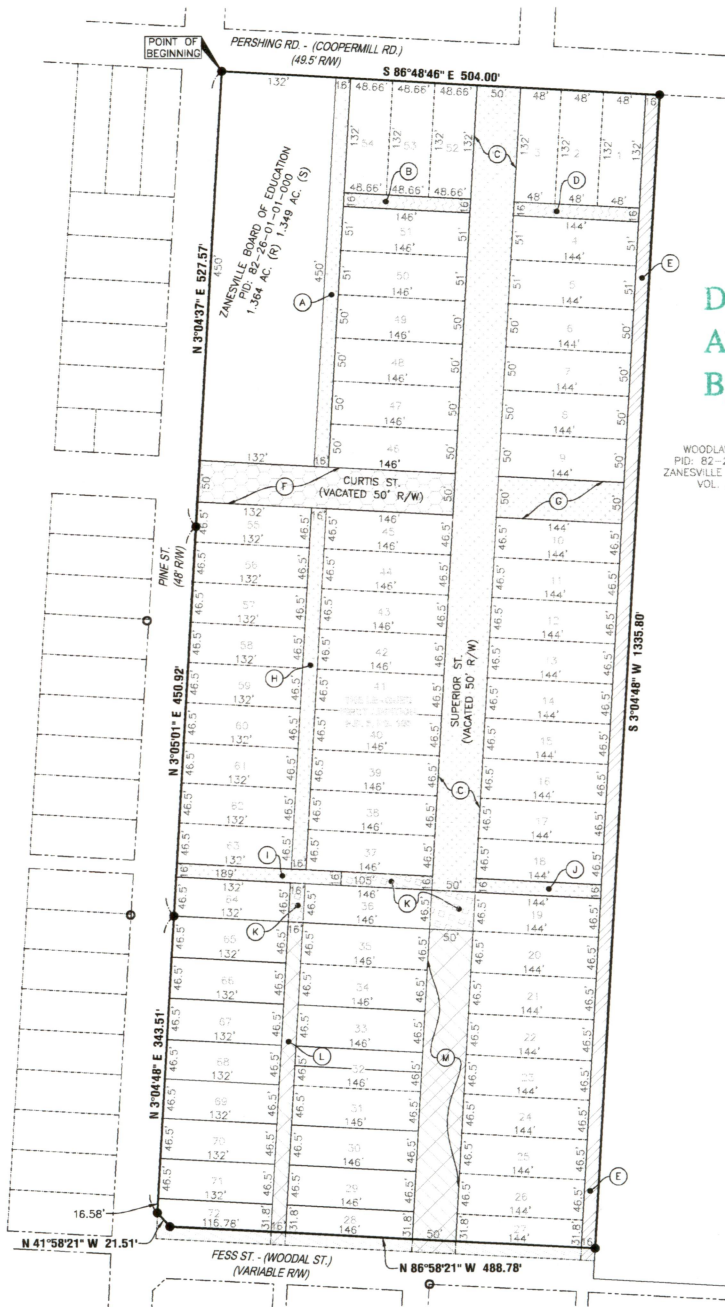


Reduced copy, not to scale, Larger copy available in the Muskingum County Engineer's Map Dept.

OWNERSHIP BREAKDOWN

- LOTS 1-26 & PT. LOT 27**
ZANESVILLE CITY SCHOOL BOARD
PID: 82-22-01-01-000
4.153 AC. (R) 4.153 (S)
BK. 2237, PG. 919
ORD. NO. 02-38 AMENDED
(ORIGINAL ORD. NO. 02-38 -
VOL. 130, PG. 319)
- PT. LOT 28**
THE BOARD OF EDUCATION FOR
ZANESVILLE CITY SCHOOLS, OHIO
PID: 82-21-01-11-000
0.106 AC. (R) 0.106 AC. (S)
BK. 2105, PG. 871
- LOT 29**
THE BOARD OF EDUCATION FOR
ZANESVILLE CITY SCHOOLS, OHIO
PID: 82-21-01-12-000
0.156 AC. (R) 0.156 AC. (S)
BK. 2105, PG. 871
- LOT 30**
THE BOARD OF EDUCATION FOR
ZANESVILLE CITY SCHOOLS, OHIO
PID: 82-21-01-13-000
0.156 AC. (R) 0.156 AC. (S)
BK. 2096, PG. 329
- ALL OF LOT 31 & SOUTH 1/2 OF LOT 32**
THE BOARD OF EDUCATION FOR
ZANESVILLE CITY SCHOOLS, OHIO
PID: 82-21-01-14-000
0.234 AC. (R) 0.234 AC. (S)
BK. 2108, PG. 342
- NORTH 1/2 OF LOT 32**
THE BOARD OF EDUCATION FOR
ZANESVILLE CITY SCHOOLS, OHIO
PID: 82-21-01-15-000
0.078 AC. (R) 0.078 AC. (S)
BK. 2108, PG. 342
- LOT 33**
THE BOARD OF EDUCATION OF THE
ZANESVILLE CITY SCHOOL DISTRICT
PID: 82-21-01-16-000
0.156 AC. (R) 0.156 AC. (S)
BK. 2096, PG. 856
- LOTS 34-35**
THE BOARD OF EDUCATION FOR
ZANESVILLE CITY SCHOOLS, OHIO
PID: 82-21-01-17-000
0.312 AC. (R) 0.312 AC. (S)
BK. 2087, PG. 300 (TRACT FOUR)
- LOT 36**
ZANESVILLE BOARD OF EDUCATION
PID: 82-21-01-18-000
0.156 AC. (R) 0.156 AC. (S)
VOL. 367, PG. 428
- LOT 37**
ZANESVILLE BOARD OF EDUCATION
PID: 82-21-01-01-000
0.156 AC. (R) 0.156 AC. (S)
VOL. 227, PG. 150
- LOT 38**
ZANESVILLE BOARD OF EDUCATION
PID: 82-21-01-01-000
0.156 AC. (R) 0.156 AC. (S)
VOL. 225, PG. 337
- LOT 39**
ZANESVILLE BOARD OF EDUCATION
PID: 82-21-01-01-000
0.156 AC. (R) 0.156 AC. (S)
VOL. 225, PG. 337
- LOT 40**
ZANESVILLE BOARD OF EDUCATION
PID: 82-21-01-01-000
0.156 AC. (R) 0.156 AC. (S)
VOL. 228, PG. 104
- LOT 41**
ZANESVILLE BOARD OF EDUCATION
PID: 82-21-01-01-000
0.156 AC. (R) 0.156 AC. (S)
VOL. 204, PG. 269
- LOT 42**
ZANESVILLE BOARD OF EDUCATION
PID: 82-21-01-01-000
0.156 AC. (R) 0.156 AC. (S)
VOL. 204, PG. 274
- LOT 43**
ZANESVILLE BOARD OF EDUCATION
PID: 82-21-01-01-000
0.156 AC. (R) 0.156 AC. (S)
VOL. 204, PG. 261
- LOT 44**
ZANESVILLE BOARD OF EDUCATION
PID: 82-21-01-01-000
0.156 AC. (R) 0.156 AC. (S)
VOL. 204, PG. 280
- LOT 45**
ZANESVILLE BOARD OF EDUCATION
PID: 82-21-01-01-000
0.156 AC. (R) 0.156 AC. (S)
VOL. 204, PG. 273
- LOT 46**
ZANESVILLE BOARD OF EDUCATION
PID: 82-26-01-01-000
0.167 AC. (R) 0.167 AC. (S)
VOL. 204, PG. 275
- LOT 47**
ZANESVILLE BOARD OF EDUCATION
PID: 82-26-01-01-000
0.167 AC. (R) 0.167 AC. (S)
VOL. 204, PG. 266
- LOT 48**
ZANESVILLE BOARD OF EDUCATION
PID: 82-26-01-01-000
0.167 AC. (R) 0.167 AC. (S)
VOL. 204, PG. 272
- LOT 49**
ZANESVILLE BOARD OF EDUCATION
PID: 82-26-01-01-000
0.167 AC. (R) 0.167 AC. (S)
VOL. 204, PG. 270
- LOT 50**
ZANESVILLE BOARD OF EDUCATION
PID: 82-26-01-01-000
0.171 AC. (R) 0.171 AC. (S)
VOL. 204, PG. 264
- LOT 51**
ZANESVILLE BOARD OF EDUCATION
PID: 82-26-01-01-000
0.171 AC. (R) 0.171 AC. (S)
VOL. 204, PG. 271
- LOT 52**
ZANESVILLE BOARD OF EDUCATION
PID: 82-26-01-01-000
0.147 AC. (R) 0.147 AC. (S)
VOL. 204, PG. 272
- LOT 53**
ZANESVILLE BOARD OF EDUCATION
PID: 82-26-01-01-000
0.147 AC. (R) 0.147 AC. (S)
VOL. 204, PG. 262
- LOT 54**
ZANESVILLE BOARD OF EDUCATION
PID: 82-26-01-01-000
0.147 AC. (R) 0.147 AC. (S)
VOL. 204, PG. 268 (SECOND PARCEL)
- LOT 55**
ZANESVILLE BOARD OF EDUCATION
PID: 82-21-01-01-000
0.141 AC. (R) 0.141 AC. (S)
VOL. 204, PG. 265
- LOT 56**
ZANESVILLE BOARD OF EDUCATION
PID: 82-21-01-01-000
0.141 AC. (R) 0.141 AC. (S)
VOL. 204, PG. 263
- LOT 57**
ZANESVILLE BOARD OF EDUCATION
PID: 82-21-01-01-000
0.141 AC. (R) 0.141 AC. (S)
VOL. 204, PG. 267
- LOT 58**
ZANESVILLE BOARD OF EDUCATION
PID: 82-21-01-01-000
0.141 AC. (R) 0.141 AC. (S)
VOL. 204, PG. 276
- LOT 59**
ZANESVILLE BOARD OF EDUCATION
PID: 82-21-01-01-000
0.141 AC. (R) 0.141 AC. (S)
VOL. 204, PG. 278
- LOT 60**
ZANESVILLE BOARD OF EDUCATION
PID: 82-21-01-01-000
0.141 AC. (R) 0.141 AC. (S)
VOL. 227, PG. 152
- LOT 61**
ZANESVILLE BOARD OF EDUCATION
PID: 82-21-01-01-000
0.141 AC. (R) 0.141 AC. (S)
VOL. 225, PG. 338
- LOTS 62-63**
ZANESVILLE BOARD OF EDUCATION
PID: 82-21-01-01-000
0.282 AC. (R) 0.282 AC. (S)
VOL. 225, PG. 337
- LOT 64**
ZANESVILLE BOARD OF EDUCATION
PID: 82-21-01-02-000
0.141 AC. (R) 0.141 AC. (S)
VOL. 367, PG. 422
- LOT 65**
THE BOARD OF EDUCATION FOR
ZANESVILLE CITY SCHOOLS, OHIO
PID: 82-21-01-03-000
0.141 AC. (R) 0.141 AC. (S)
BK. 2102, PG. 550
- LOT 66**
THE BOARD OF EDUCATION FOR
ZANESVILLE CITY SCHOOLS, OHIO
PID: 82-21-01-04-000
0.141 AC. (R) 0.141 AC. (S)
BK. 2104, PG. 700
- LOT 67**
THE BOARD OF EDUCATION FOR
ZANESVILLE CITY SCHOOLS, OHIO
PID: 82-21-01-05-000
0.141 AC. (R) 0.141 AC. (S)
BK. 2087, PG. 300 (TRACT THREE)
- LOT 68**
THE BOARD OF EDUCATION FOR
ZANESVILLE CITY SCHOOLS, OHIO
PID: 82-21-01-06-000
0.141 AC. (R) 0.141 AC. (S)
BK. 2087, PG. 300 (TRACT THREE)
- LOT 69**
THE BOARD OF EDUCATION FOR
ZANESVILLE CITY SCHOOLS, OHIO
PID: 82-21-01-07-000
0.141 AC. (R) 0.141 AC. (S)
BK. 2087, PG. 300 (TRACT THREE)
- LOT 70**
THE BOARD OF EDUCATION FOR
ZANESVILLE CITY SCHOOLS, OHIO
PID: 82-21-01-08-000
0.141 AC. (R) 0.141 AC. (S)
BK. 2087, PG. 300 (TRACT ONE)
- LOT 71**
THE BOARD OF EDUCATION FOR
ZANESVILLE CITY SCHOOLS, OHIO
PID: 82-21-01-09-000
0.141 AC. (R) 0.141 AC. (S)
BK. 2102, PG. 552
- PT. LOT 72**
THE BOARD OF EDUCATION FOR
ZANESVILLE CITY SCHOOLS, OHIO
PID: 82-21-01-10-000
0.093 AC. (R) 0.093 AC. (S)
BK. 2101, PG. 36
- A**
ZANESVILLE BOARD OF EDUCATION
PID: 82-21-01-21-000
0.165 AC. (R) 0.165 AC. (S)
BK. 1805, PG. 388
(ORD. NO. 03-34 AMENDED)
- B**
ZANESVILLE BOARD OF EDUCATION
PID: 82-21-01-25-000
0.054 AC. (R) 0.054 AC. (S)
BK. 1844, PG. 150
(ORD. NO. 03-95)
- C**
ZANESVILLE BOARD OF EDUCATION
PID: 82-21-01-24-000
1.073 AC. (R) 1.072 AC. (S)
BK. 1805, PG. 388
(ORD. NO. 03-34 AMENDED)
- D**
ZANESVILLE BOARD OF EDUCATION
PID: 82-21-01-26-000
0.053 AC. (R) 0.053 AC. (S)
BK. 1844, PG. 150
(ORD. NO. 03-95)
- E**
ZANESVILLE BOARD OF EDUCATION
PID: 82-21-01-28-000
0.491 AC. (R) 0.490 AC. (S)
BK. 1850, PG. 845
(ORD. NO. 4282)
- F**
ZANESVILLE BOARD OF EDUCATION
PID: 82-21-01-23-000
0.237 AC. (R) 0.236 AC. (S)
BK. 1850, PG. 842
(ORD. NO. 1721)
- G**
ZANESVILLE BOARD OF EDUCATION
PID: 82-21-01-22-000
0.165 AC. (R) 0.165 AC. (S)
BK. 1805, PG. 388
(ORD. NO. 03-34 AMENDED)
- H**
ZANESVILLE BOARD OF EDUCATION
PID: 82-21-01-20-000
0.154 AC. (R) 0.154 AC. (S)
BK. 1805, PG. 388
(ORD. NO. 03-34 AMENDED)
- I**
ZANESVILLE BOARD OF EDUCATION
PID: 82-21-01-23-000
0.069 AC. (R) 0.069 AC. (S)
BK. 1805, PG. 388
(ORD. NO. 03-34 AMENDED)
- J**
ZANESVILLE BOARD OF EDUCATION
PID: 82-21-01-19-000
0.053 AC. (R) 0.053 AC. (S)
BK. 1805, PG. 388
(ORD. NO. 03-34 AMENDED)
- K**
ZANESVILLE BOARD OF EDUCATION
PID: 82-26-01-01-000
0.109 AC. (R) 0.109 AC. (S)
BK. 1850, PG. 845
(ORD. NO. 4282)
- L**
ZANESVILLE BOARD OF EDUCATION
PID: 82-21-01-29-000
0.131 AC. (R) 0.131 AC. (S)
BK. 2194, PG. 177
(ORD. NO. 08-49)
- M**
ZANESVILLE BOARD OF EDUCATION
PID: 82-21-01-30-000
0.410 AC. (R) 0.409 AC. (S)
BK. 2194, PG. 177
(ORD. NO. 08-49)
- N**
ZANESVILLE BOARD OF EDUCATION
PID: 82-21-01-31-000
1.364 AC. (R) 1.349 AC. (S)
BK. N/A, PG. N/A

PARCEL CONSOLIDATION - 15.461 ACRES



DESCRIPTION APPROVED
By: *Rolsch*

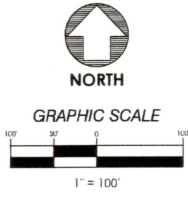
WOODLAWN CEMETERY
PID: 82-23-01-01-000
ZANESVILLE CITY BOOK 1900
VOL. 20, PG. 41



OFFICES
128 East Main Street
Logan, Ohio 43138
740-385-2140

1495 Old Henderson Road
Columbus, Ohio 43220
614-459-6992

507 Main Street
Zanesville, Ohio 43701
740-450-1640



SURVEYOR'S NOTES

- BOUNDARY LINES ARE DEPICTED FROM RECORD LINES FOUND IN ALL REFERENCES HEREON RECORDED AT THE MUSKINGUM COUNTY RECORDER'S OFFICE.
- ALL IRON PINS SET WILL BE 3/4" PIPE WITH PLASTIC CAP STAMPED "SANDS DECKER"
- ALL INTERNAL DIMENSIONS SHOWN ARE RECORD DIMENSIONS.
- (R) INDICATES RECORD MEASUREMENT
- (S) INDICATES SURVEY MEASUREMENT

- ALLEY VACATED PER ORDINANCE NO. 4282 ADOPTED ON MARCH 28, 1949 AND RECORDED IN BOOK 1850, PAGE 842 ON MARCH 24, 2004.
- STREETS/ALLEYS VACATED PER ORDINANCE NO. 03-34 ADOPTED ON JUNE 9, 2003 AND RECORDED IN BK. 1805, PG. 388 ON SEPTEMBER 19, 2003 AS ORDINANCE NO. 03-34 AMENDED.
- STREET/ALLEY VACATED PER ORDINANCE NO. 08-49 ADOPTED ON MAY 27, 2009 AND RECORDED IN BK. 2194, PG. 177 ON NOVEMBER 26, 2008.
- STREET VACATED PER ORDINANCE NO. 1721 ADOPTED ON DECEMBER 17, 1928 AND RECORDED IN BK. 1850, PG. 842 ON MARCH 24, 2004.
- STREET VACATED PER ORDINANCE NO. 03-95 ADOPTED ON OCTOBER 14, 2003 AND RECORDED IN BK. 1844, PG. 150 ON FEBRUARY 27, 2004.
- STREET/ALLEY POSSIBLY VACATED PER ORDINANCE NO. 4282 ADOPTED ON MARCH 28, 1949 AND RECORDED IN BOOK 1850, PAGE 845 ON MARCH 24, 2004.
- ADDITIONAL FESS STREET RIGHT OF WAY DEDICATED ON OCTOBER 24, 2012 RECORDED IN PLAT BOOK 20, PAGE 37.

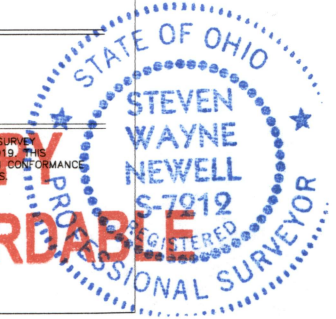
AREA SUMMARY

15.461 ACRES BY SURVEY
15.480 ACRES BY RECORD

CERTIFICATION

THIS DRAWING IS REPRESENTATIVE OF AN ACTUAL FIELD SURVEY PERFORMED UNDER MY DIRECT SUPERVISION ON JUNE 23, 2019. THE DRAWING IS PRESENTED AS A BOUNDARY SURVEY IN PERFORMANCE WITH OAC 4733-37 STANDARDS FOR BOUNDARY SURVEYS.

Steven Wayne Newell
STEVEN WAYNE NEWELL
REGISTERED PROFESSIONAL SURVEYOR
NO. 7012
DATE: 6/30/2019



NOT RECORDED