

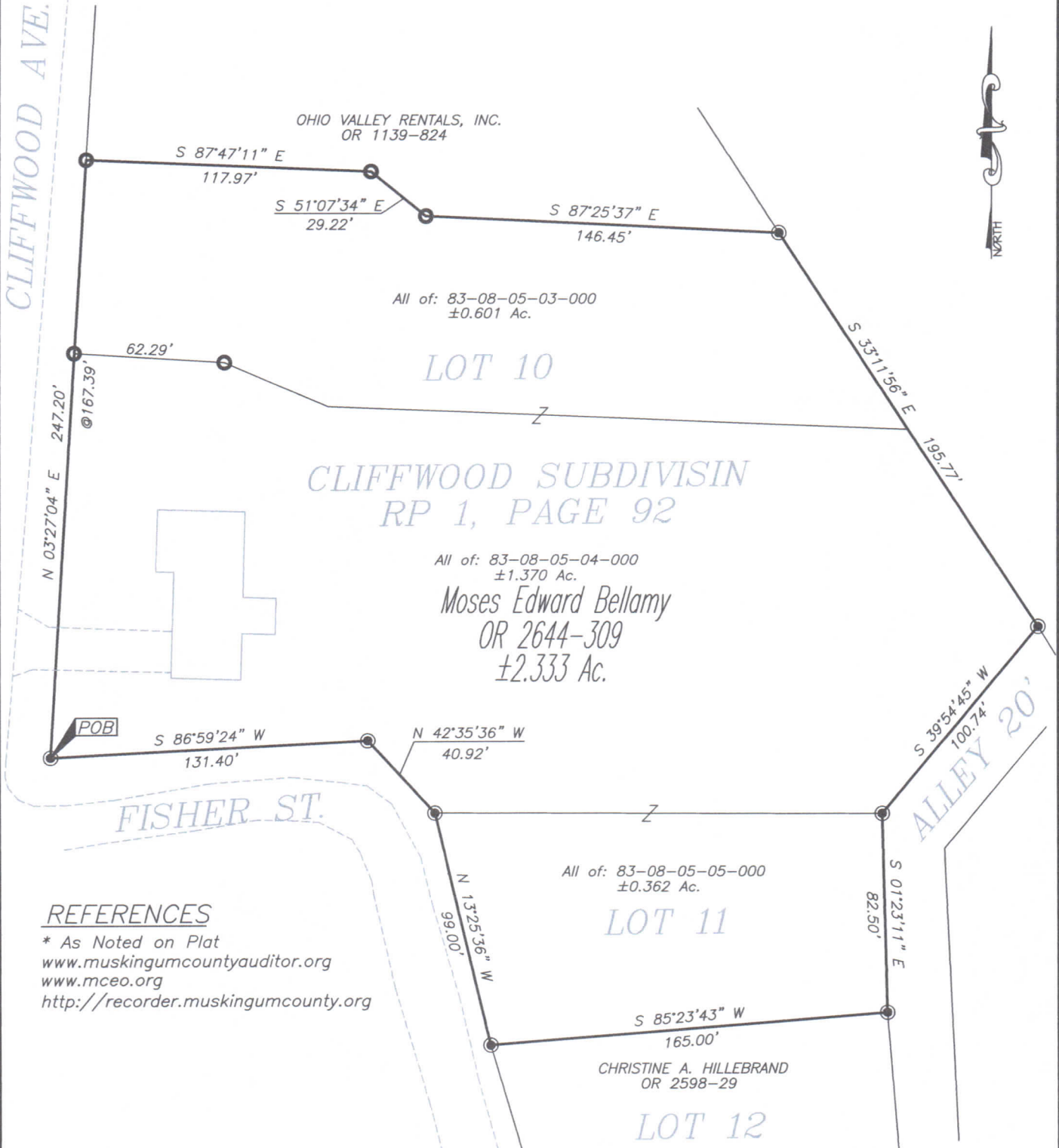
# RE SURVEY

## SITUATED IN

The State of Ohio, County of Muskingum  
City of Zanesville and being part of Lot 10  
& all of Lot 11, Cliffwood Addition, RP1-92.

## BASIS OF BEARING

Bearings are based on State Plane Grid Coordinates,  
NAD83, Ohio South, per GPS Observation.



## REFERENCES

\* As Noted on Plat  
[www.muskingumcountyauditor.org](http://www.muskingumcountyauditor.org)  
[www.mceo.org](http://www.mceo.org)  
<http://recorder.muskingumcounty.org>

## LEGEND

- Iron Pin Found
- ⊙ Iron Pin Set, 5/8" rebar
- Iron Pipe Found

DESCRIPTION  
APPROVED

By: *[Signature]*



OFFICE COPY

NOT RECORDABLE

Brian Kelly McPeck  
Reg. Surveyor No. 8517

## GRAPHIC SCALE



( IN FEET )  
1 inch = 60 ft.



**MCPECK  
LAND  
SURVEYING**

www.mcpeeklandsurveying.com  
email: [brian@mcpeeklandsurveying.com](mailto:brian@mcpeeklandsurveying.com)  
340 Robin Hood Ln., \* Zanesville, Oh 43701 \* 740.704.6073