

# SITUATED IN

The State of Ohio, County of Muskingum  
City of Zanesville, and being a part of Lot 4  
Chapman's Addition (RP1, Page 239).

# RESURVEY

## BASIS OF BEARING

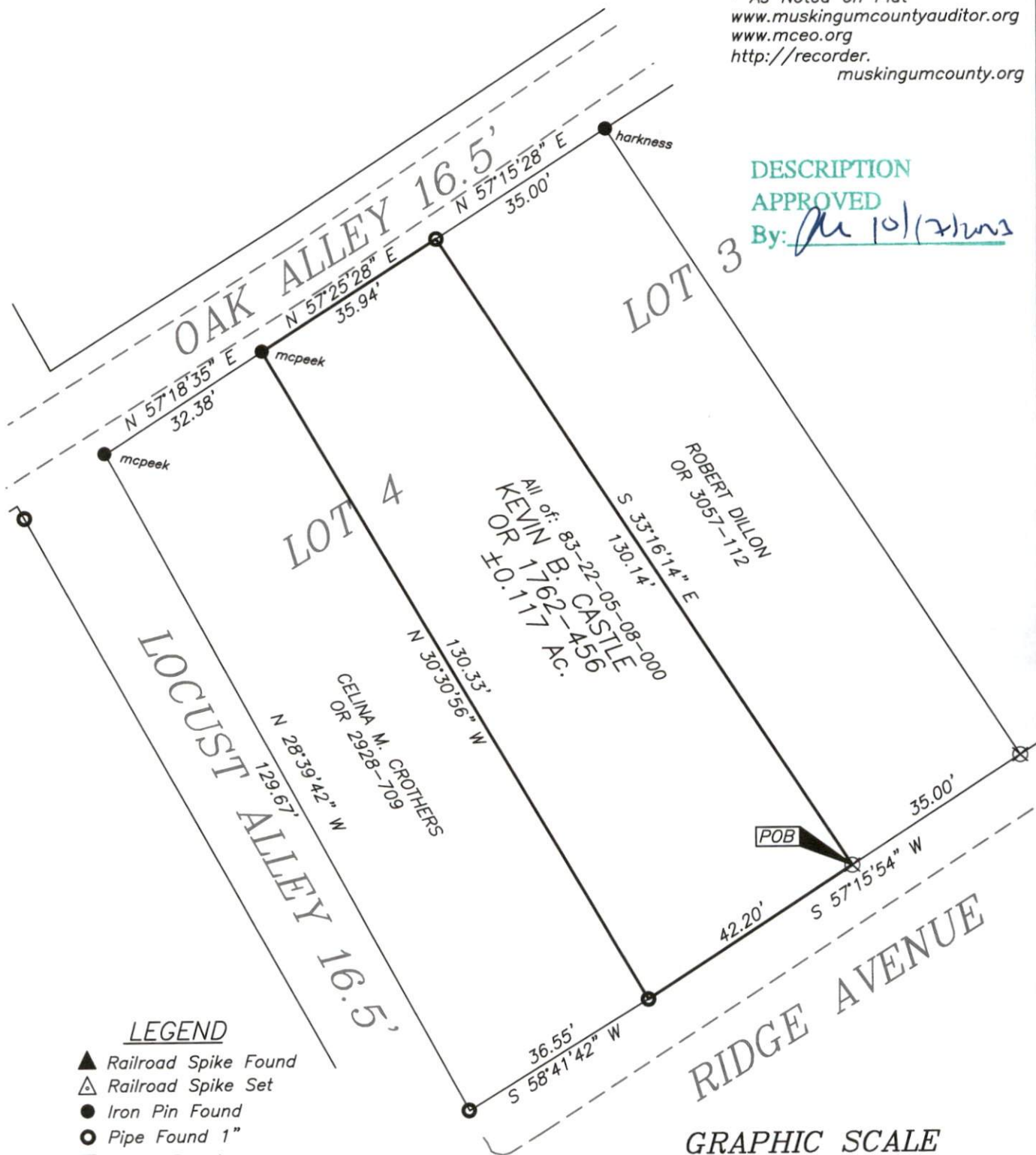
Bearings are based on State Plane Grid Coordinates,  
NAD83, Ohio South, per GPS Observation.

## REFERENCES

\* As Noted on Plat  
[www.muskingumcountyauditor.org](http://www.muskingumcountyauditor.org)  
[www.mceo.org](http://www.mceo.org)  
<http://recorder.muskingumcounty.org>

## DESCRIPTION APPROVED

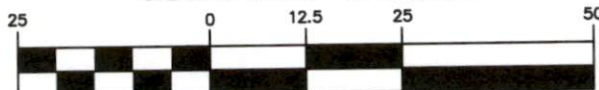
By: Mc 10/12/13



## LEGEND

- ▲ Railroad Spike Found
- △ Railroad Spike Set
- Iron Pin Found
- Pipe Found 1"
- ⊠ Stone Found
- Z- Property Hook
- Iron Pin Set
- Ex. Fence
- ⊠ "X" Etched in Conc.

## GRAPHIC SCALE



( IN FEET )

1 inch = 25 ft.

**OFFICE COPY  
NOT RECORDABLE**

Brian Kelly McPeck  
Reg. Surveyor No. 8517

This plat was prepared by McPeck Land Surveying, LLC  
in accordance with Chapter 4733-37 of the Administrative Code,  
and is intended to be used for the legal transfer of the property  
described and does not intend to describe all or any easements of  
record, nor encroachments unless otherwise intended.



**MCPECK  
LAND  
SURVEYING**

[www.mcpeeklandsurveying.com](http://www.mcpeeklandsurveying.com)  
email: [brian@mcpeeklandsurveying.com](mailto:brian@mcpeeklandsurveying.com)  
1705 East Pike, \* Zanesville, Oh 43701 \* 740.704.6073