

SITUATED IN

The State of Ohio, County of Muskingum  
City of Zanesville, and being a part of Lot 4  
Chapman's Addition (RP1, Page 239).

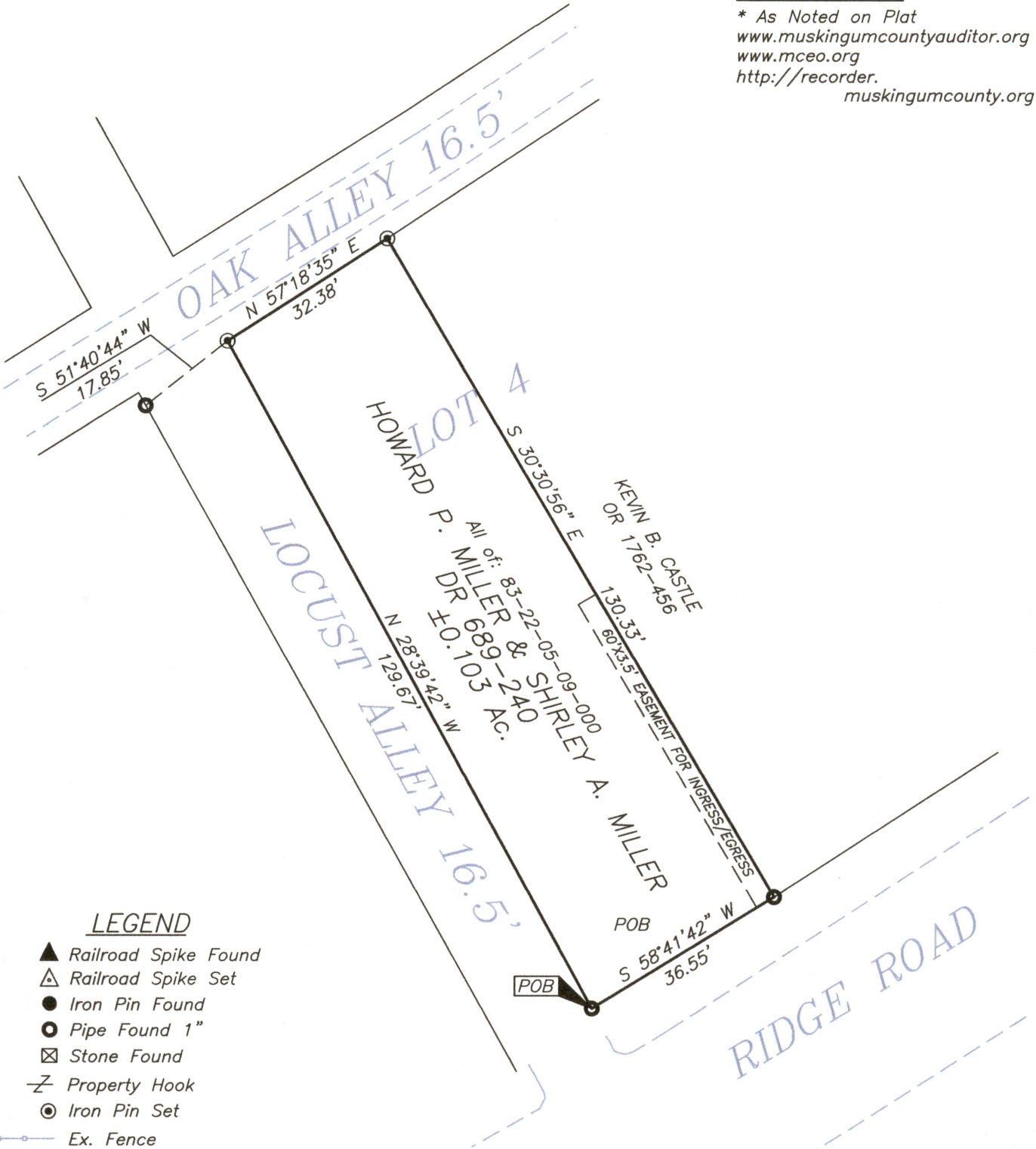
RESURVEY

BASIS OF BEARING

Bearings are based on State Plane Grid Coordinates,  
NAD83, Ohio South, per GPS Observation.

REFERENCES

\* As Noted on Plat  
[www.muskingumcountyauditor.org](http://www.muskingumcountyauditor.org)  
[www.mceo.org](http://www.mceo.org)  
<http://recorder.muskingumcounty.org>



LEGEND

- ▲ Railroad Spike Found
- △ Railroad Spike Set
- Iron Pin Found
- Pipe Found 1"
- ⊠ Stone Found
- Property Hook
- Iron Pin Set
- Ex. Fence

DESCRIPTION

APPROVED

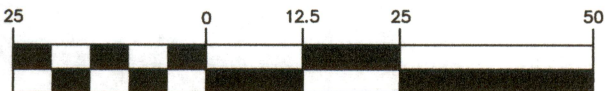
By: *[Signature]*  
5/14/20



**OFFICE COPY  
NOT RECORDABLE**

Brian Kelly McPeck  
Reg. Surveyor No. 8517

Date 5/2/20



( IN FEET )  
1 inch = 25 ft.

**MCPEEK  
LAND  
SURVEYING** LLC  
www.mcpeeklandsurveying.com  
email: [brian@mcpeeklandsurveying.com](mailto:brian@mcpeeklandsurveying.com)  
340 Robin Hood Ln.,\* Zanesville, Oh 43701 \* 740.704.6073