

### SITUATED IN

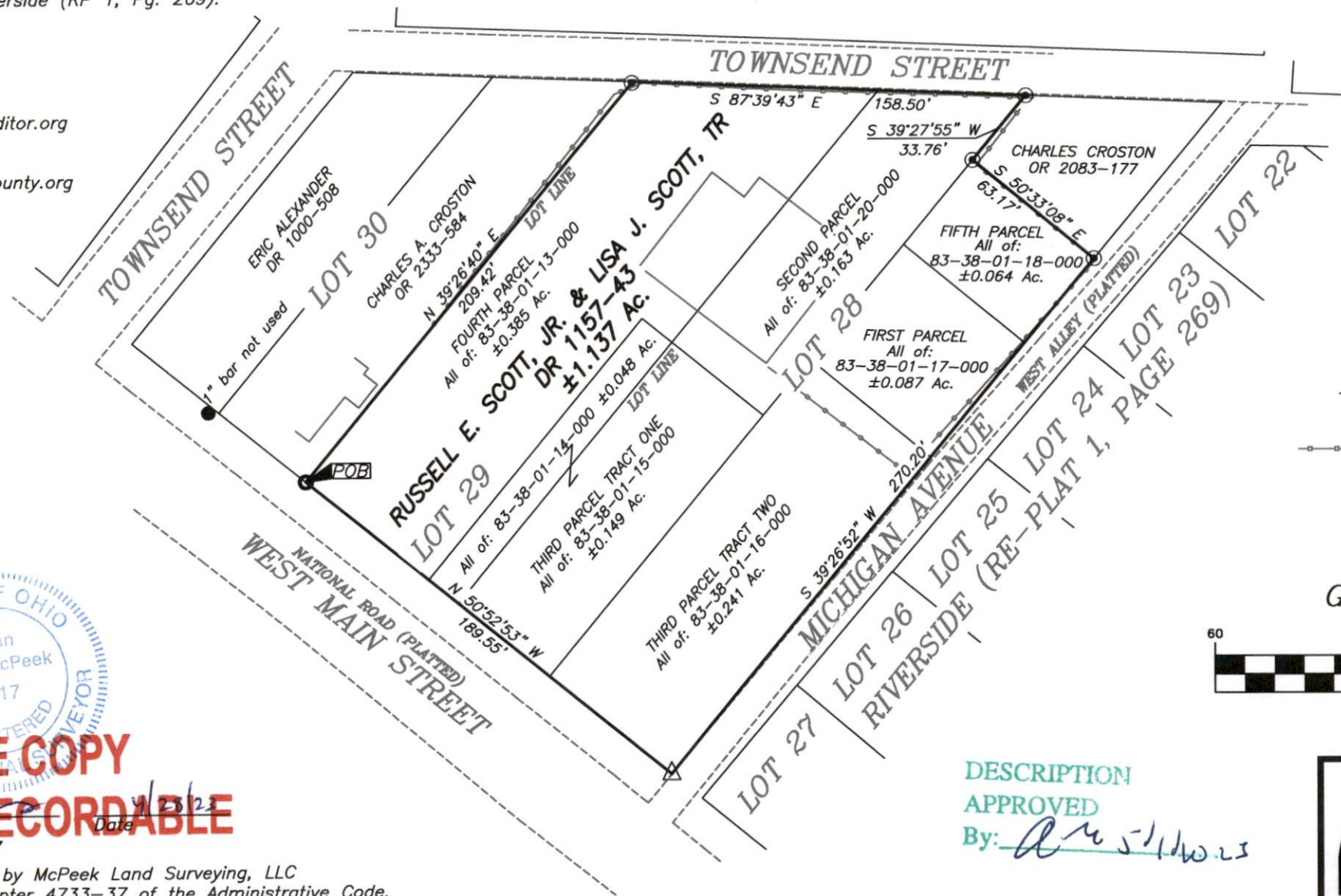
The State of Ohio, County of Muskingum  
City of Zanesville and being all of Lot 29  
and Part of Lot 28, Riverside (RP 1, Pg. 269).

### BASIS OF BEARING

Bearings are based on State Plane Grid Coordinates,  
NAD83, Ohio South, per GPS Observation.

### REFERENCES

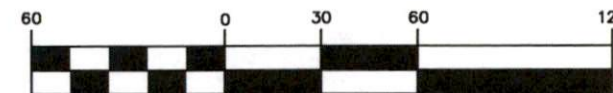
\* As Noted on Plat  
[www.muskingumcountyauditor.org](http://www.muskingumcountyauditor.org)  
[www.mceo.org](http://www.mceo.org)  
<http://recorder.muskingumcounty.org>



### LEGEND

- △ PK Nail Set
- Iron Pin Found (as noted)
- Pipe Found w/cap
- ⊠ Stone Found
- Property Hook
- ⊙ Iron Pin Set (5/8"x30")
- Ex. Fence
- Point Not Marked

### GRAPHIC SCALE



( IN FEET )  
1 inch = 60 ft.

### DESCRIPTION

APPROVED

By: *[Signature]*

**MCPEEK  
LAND  
SURVEYING**

www.mcpeeklandsurveying.com  
email: [brian@mcpeeklandsurveying.com](mailto:brian@mcpeeklandsurveying.com)  
1705 East Pike, \* Zanesville, Oh 43701 \* 740.704.6073



OFFICE COPY

NOT RECORDABLE

Brian Kelly McPeck  
Reg. Surveyor No. 8517

This plat was prepared by McPeck Land Surveying, LLC  
in accordance with Chapter 4733-37 of the Administrative Code,  
and is intended to be used for the legal transfer of the property  
described and does not intend to describe all or any easements of  
record, nor encroachments unless otherwise intended.