

Re-Survey

SITUATED IN

The State of Ohio, County of Muskingum, the City of Zanesville, Fourth Quarter, T1, R8, U.S.M.L.

BASIS OF BEARING

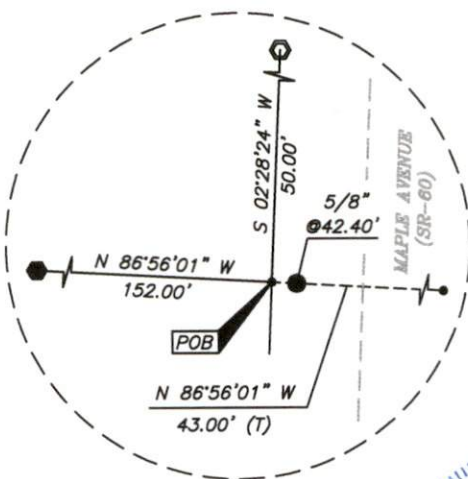
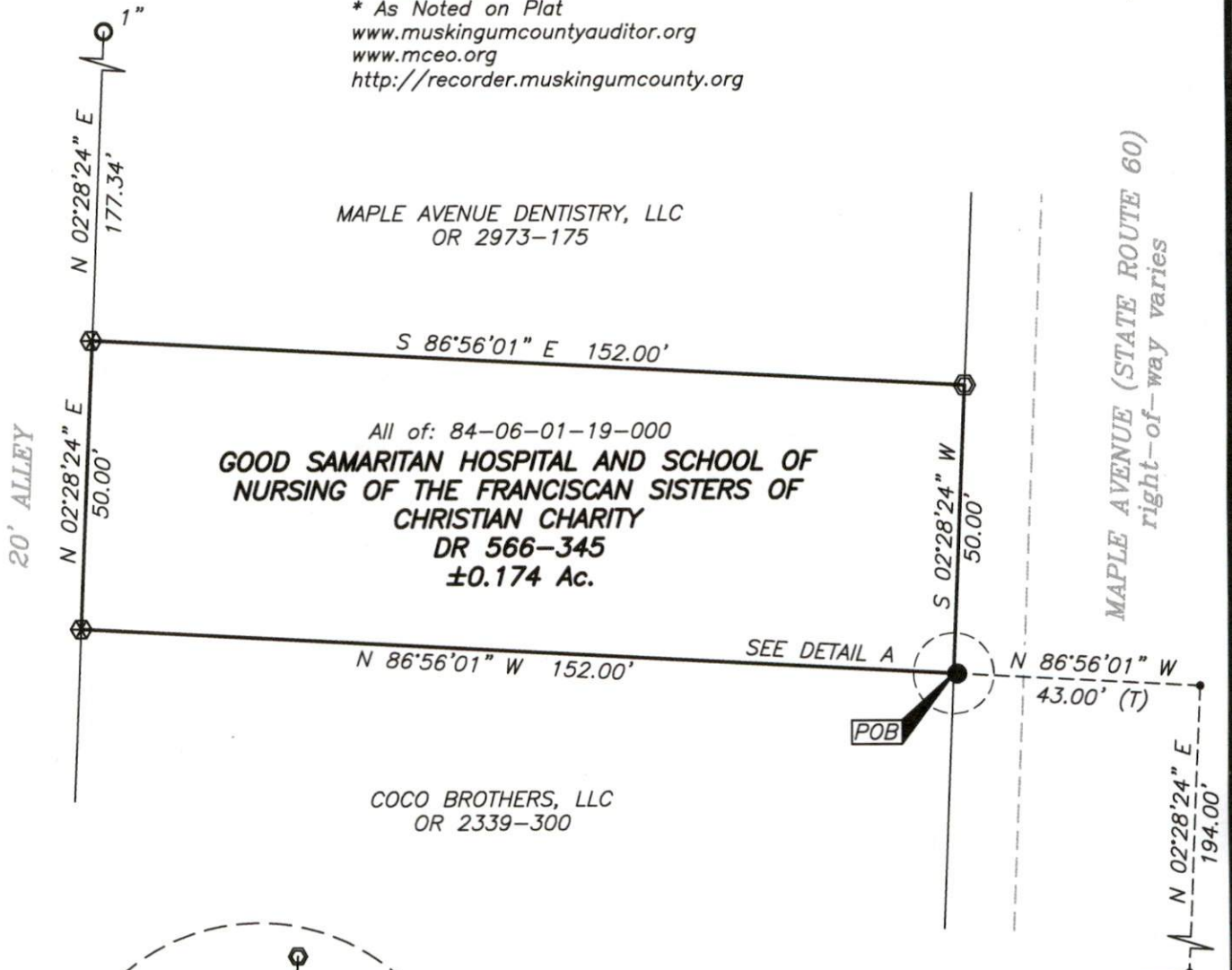
Bearings are based on State Plane Grid Coordinates, NAD83, Ohio South, per GPS Observation.

REFERENCES

* As Noted on Plat
www.muskingumcountyauditor.org
www.mceo.org
http://recorder.muskingumcounty.org

LEGEND

- Unmarked Point
- Iron Pin Found
- ⊗ Axle Found
- Iron Pipe Found
- ⊙ Gin Pin Set



DETAIL A
N.T.S.

BEING A POINT AT THE INTERSECTION OF THE ZANE GRANT LINE AND THE LINE BETWEEN THE SEVENTH AND EIGHTH RANGES (7TH AND 8TH)

DESCRIPTION

APPROVED

By: *[Signature]*

GRAPHIC SCALE



(IN FEET)
1 inch = 30 ft.

**OFFICE COPY
NOT RECORDABLE**

Brian Kelly McPeck
Reg. Surveyor No. 8517

This plat was prepared by McPeck Land Surveying, LLC in accordance with Chapter 4733-37 of the Administrative Code, and is intended to be used for the legal transfer of the property described and does not intend to describe all or any easements of record, nor encroachments unless otherwise intended.



**MCPECK
LAND
SURVEYING**

LLC

www.mcpecklandsurveying.com
email: brian@mcpecklandsurveying.com
1705 East Pike, * Zanesville, Oh 43701 * 740.704.6073