

SITUATED IN

The State of Ohio, County of Muskingum, City of Zanesville  
and being all of Lots 5 & 6 of Ball's Subdivision (PB 1, Page 232).

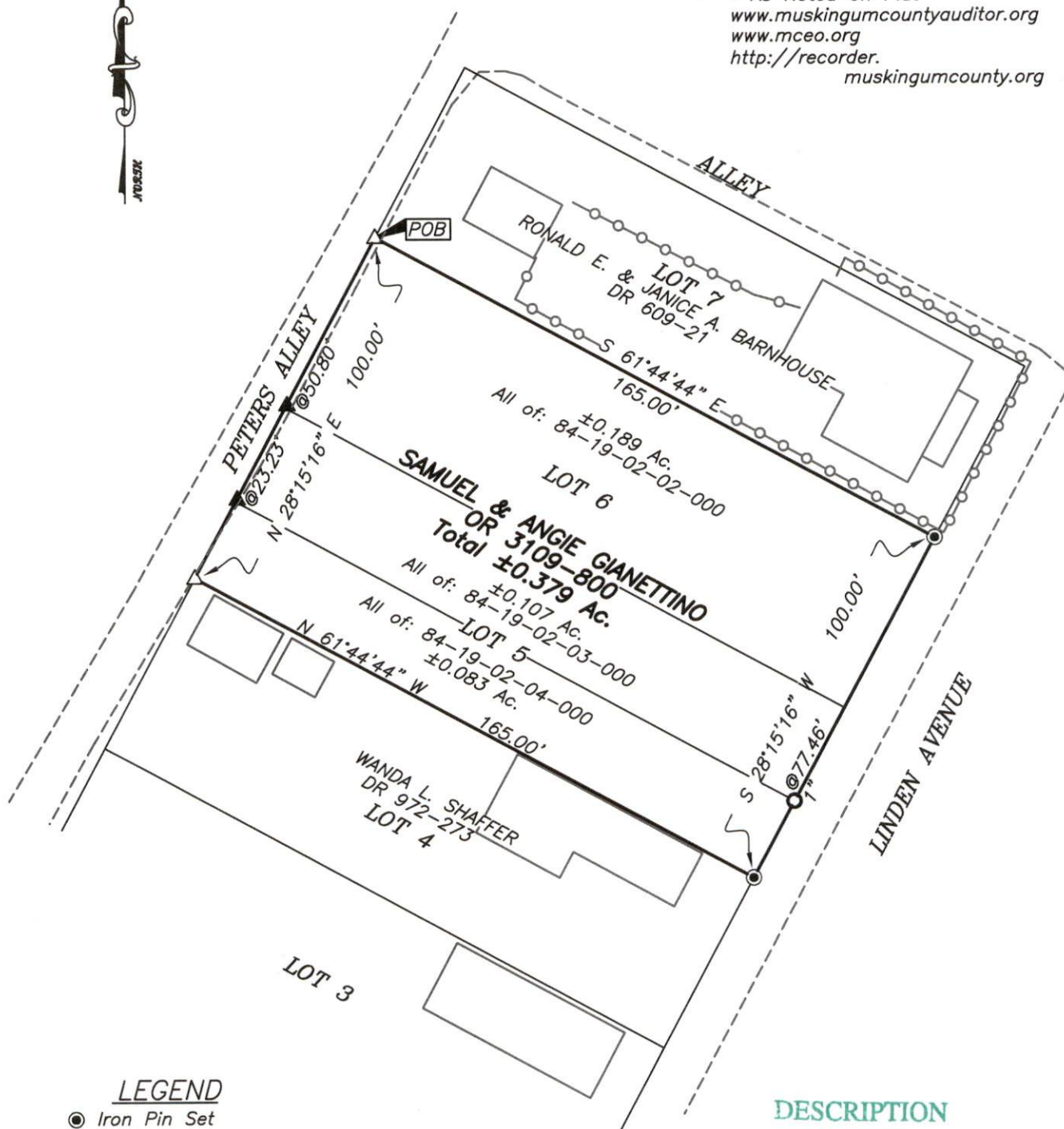
ReSurvey

BASIS OF BEARING

Bearings are based on State Plane Grid Coordinates  
& Distances, NAD83, Ohio South, per GPS Observation.

REFERENCES

\* As Noted on Plat  
[www.muskingumcountyauditor.org](http://www.muskingumcountyauditor.org)  
[www.mceo.org](http://www.mceo.org)  
<http://recorder.muskingumcounty.org>



LEGEND

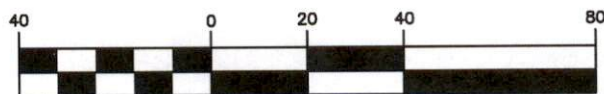
- Iron Pin Set
- Iron Pin Found
- Axle Found
- Z— Property Hook
- Pipe Found
- △ Railroad Spike Set
- ▲ Railroad Spike Found

DESCRIPTION

APPROVED

By: DMB 12-6-2022

Graphic Scale



( IN FEET )

1 inch = 40 ft.

**OFFICE COPY  
NOT RECORDABLE**

Brian Kelly McPeck  
Reg. Surveyor No. 8517

This plat was prepared by McPeck Land Surveying, LLC  
in accordance with Chapter 4733-37 of the Administrative Code,  
and is intended to be used for the legal transfer of the property  
described and does not intend to describe all or any easements of  
record, nor encroachments unless otherwise intended.



**MCPECK  
LAND  
SURVEYING**

[www.mcpeeklandsurveying.com](http://www.mcpeeklandsurveying.com)  
email: [brian@mcpeeklandsurveying.com](mailto:brian@mcpeeklandsurveying.com)  
340 Robin Hood Ln., \* Zanesville, Oh 43701 \* 740.704.6073