

SITUATED IN

The State of Ohio, County of Muskingum, City of Zanesville  
and being all of Lots 14 & 15 and part of lots 16, 17 & 18  
of Ball's Subdivision (PB 1, Page 232).

ReSurvey

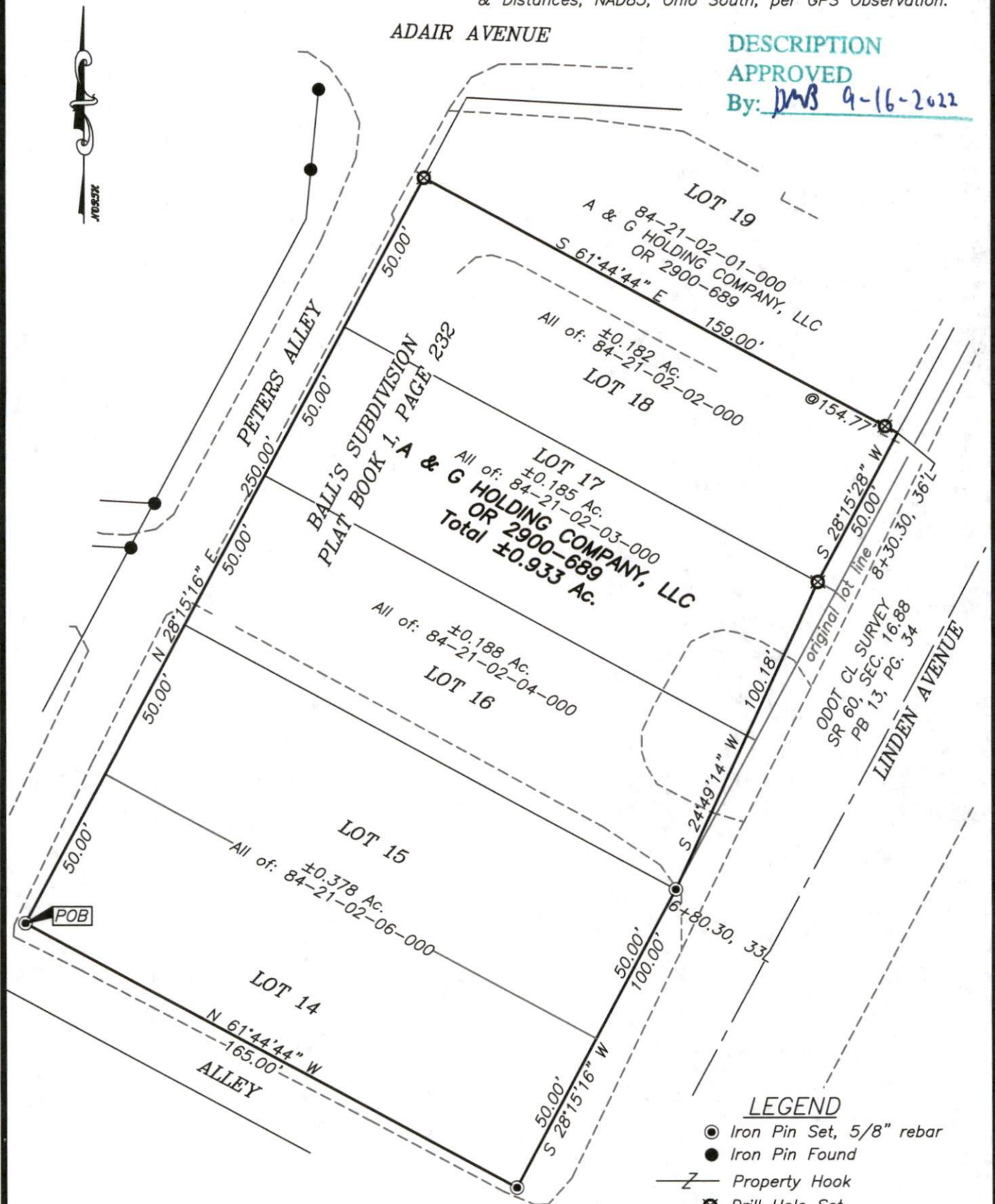
BASIS OF BEARING

Bearings are based on State Plane Grid Coordinates  
& Distances, NAD83, Ohio South, per GPS Observation.

DESCRIPTION

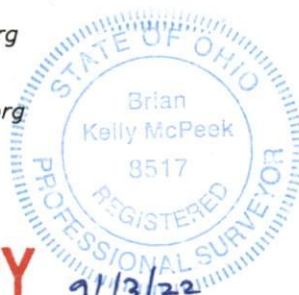
APPROVED

By: DMB 9-16-2022



REFERENCES

\* As Noted on Plat  
[www.muskingumcountyauditor.org](http://www.muskingumcountyauditor.org)  
[www.mceo.org](http://www.mceo.org)  
<http://recorder.muskingumcounty.org>



Brian Kelly McPeck  
Reg. Surveyor No. 8517

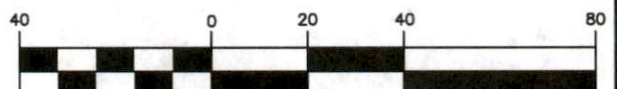
Date

9/13/22

**OFFICE COPY**  
**NOT RECORDABLE**

This plat was prepared by McPeck Land Surveying, LLC  
in accordance with Chapter 4733-37 of the Administrative Code,  
and is intended to be used for the legal transfer of the property  
described and does not intend to describe all or any easements of  
record, nor encroachments unless otherwise intended.

Graphic Scale



( IN FEET )

1 inch = 40 ft.



**MCPECK  
LAND  
SURVEYING**

[www.mcpeeklandsurveying.com](http://www.mcpeeklandsurveying.com)  
email: [brian@mcpeeklandsurveying.com](mailto:brian@mcpeeklandsurveying.com)  
340 Robin Hood Ln., \* Zanesville, Oh 43701 \* 740.704.6073