

## SITUATED IN

The State of Ohio, County of Muskingum  
City of Zanesville and being part of  
Lot 9 of Boggs Farm No. 3  
(PB 2, Pg. 143)

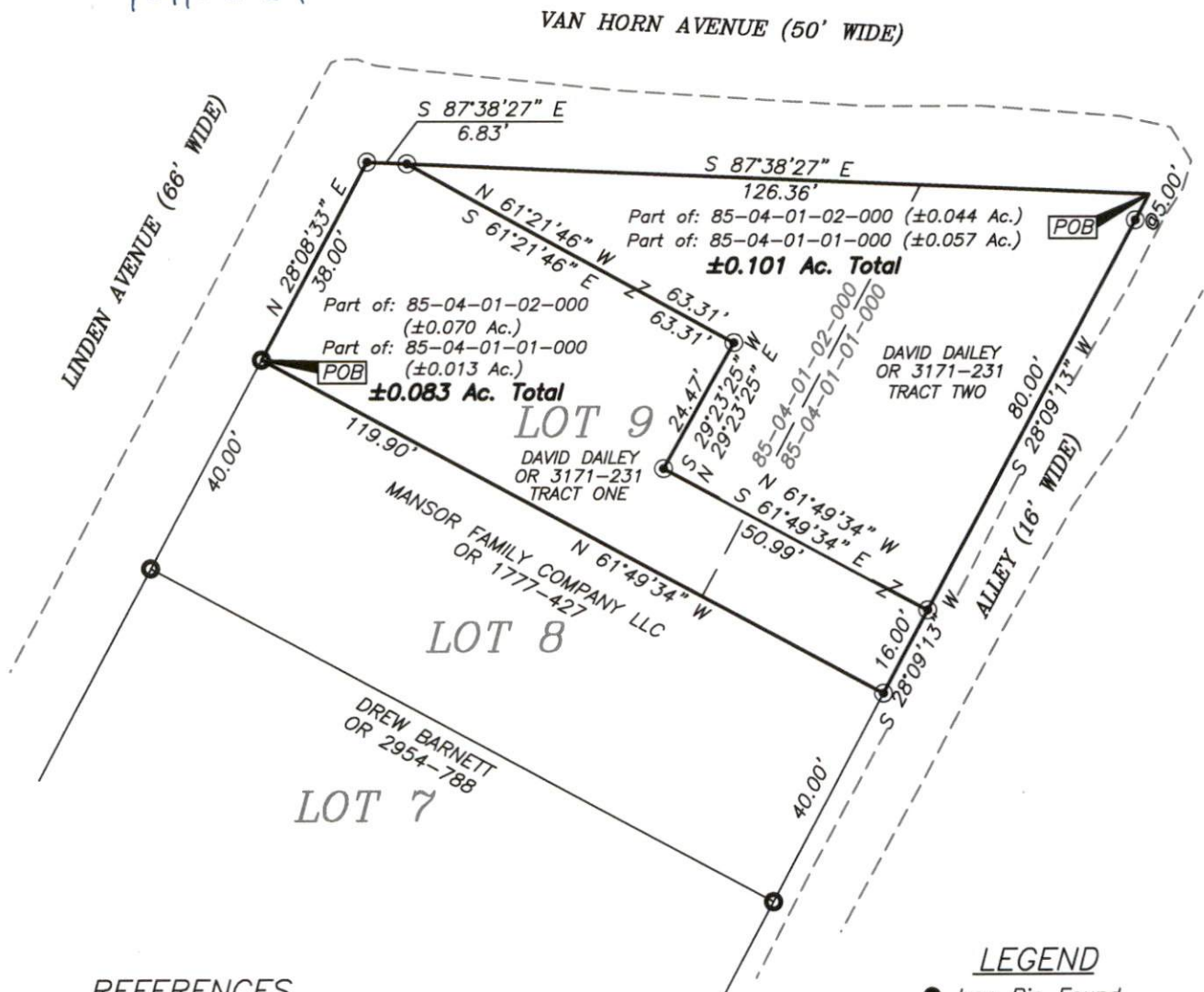
## Survey Split

### BASIS OF BEARING

Bearings are based on State Plane Grid Coordinates,  
NAD83, Ohio South, per GPS Observation.

### DESCRIPTION APPROVED

By: D. M. Barnhard  
1-11-2024



### REFERENCES

\* As Noted on Plat  
[www.muskingumcountyauditor.org](http://www.muskingumcountyauditor.org)  
[www.mceo.org](http://www.mceo.org)  
<http://recorder.muskingumcounty.org>

APPROVED BY CITY PLANNING COMMISSION,  
ZANESVILLE, OHIO;  
NO PLAT REQUIRED

*[Signature]*

### LEGEND

- Iron Pin Found
- Pipe Found
- ⊠ Stone Found
- Property Hook
- Iron Pin Set
- Ex. Fence

### GRAPHIC SCALE



( IN FEET )

1 inch = 30 ft.

*[Signature]*  
Brian Kelly McPeek  
Reg. Surveyor No. 8517  
Date 11/15/23

This plat was prepared by McPeek Land Surveying, LLC  
in accordance with Chapter 4733-37 of the Administrative Code,  
and is intended to be used for the legal transfer of the property  
described and does not intend to describe all or any easements of  
record, nor encroachments unless otherwise intended.



**MCPEEK  
LAND  
SURVEYING**

LLC  
[www.mcpeeklandsurveying.com](http://www.mcpeeklandsurveying.com)  
email: [brian@mcpeeklandsurveying.com](mailto:brian@mcpeeklandsurveying.com)  
1705 East Pike, \* Zanesville, Oh 43701 \* 740.704.6073