

SITUATED IN

The State of Ohio, County of Muskingum
City of Zanesville, Part of Lot 6 Sibley's Sub.,
1st Qtr. Twp., T1, R8, USML.

SPLIT TO ADJOIN

BASIS OF BEARING

Bearings are based on State Plane Grid Coordinates,
NAD83, Ohio South, per GPS Observation.

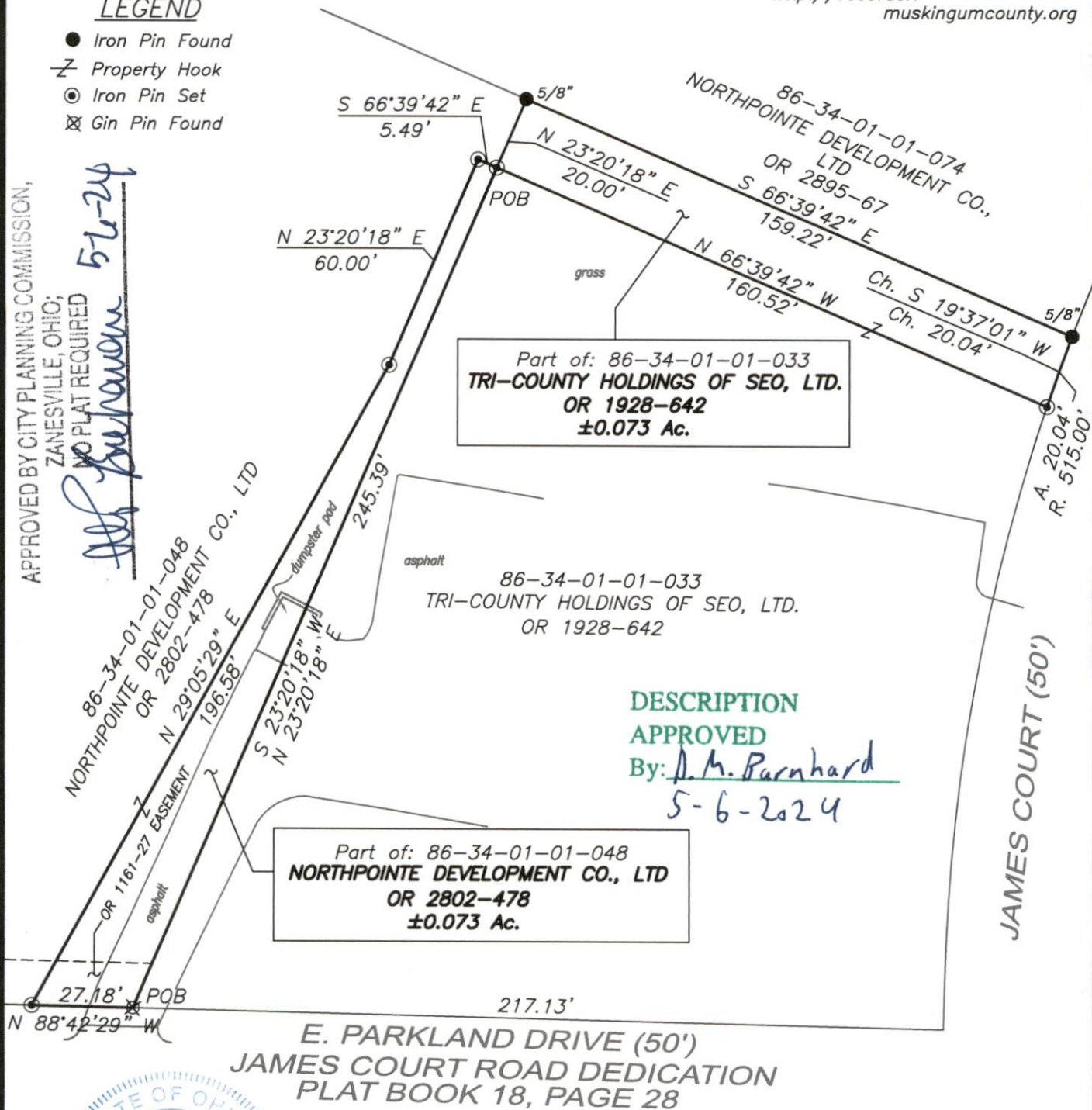
REFERENCES

* As Noted on Plat
www.muskingumcountyauditor.org
www.mceo.org
<http://recorder.muskingumcounty.org>

LEGEND

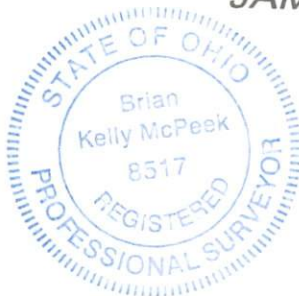
- Iron Pin Found
- ⌵ Property Hook
- ⊙ Iron Pin Set
- ⊗ Gin Pin Found

APPROVED BY CITY PLANNING COMMISSION,
ZANESVILLE, OHIO;
NO PLAT REQUIRED
5-6-24
Barnhard



DESCRIPTION APPROVED

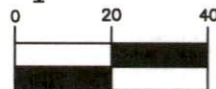
By: D. M. Barnhard
5-6-2024



ADJOINER STATEMENT

Not to be used as a separate building site or transferred as an independent parcel in the future without planning commission approval in accordance with applicable subdivision regulations.

Graphic Scale



(IN FEET)
1 inch = 40 ft.

OFFICE COPY

NOT RECORDABLE

Brian Kelly McPeck
Reg. Surveyor No. 8517

This plat was prepared by McPeck Land Surveying, LLC in accordance with Chapter 4733-37 of the Administrative Code, and is intended to be used for the legal transfer of the property described and does not intend to describe all or any easements of record, nor encroachments unless otherwise intended.



LLC
www.mcpeeklandsurveying.com
email: brian@mcpeeklandsurveying.com
1705 East Pike, * Zanesville, Oh 43701 * 740.704.6073