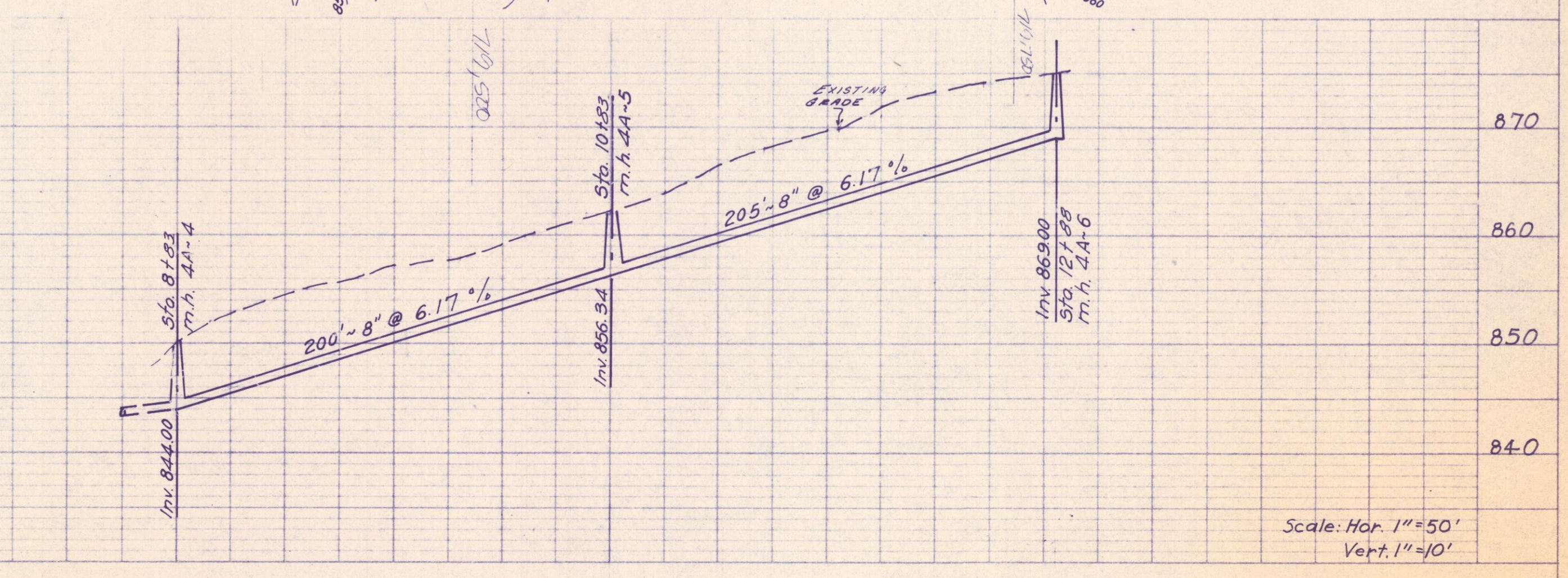
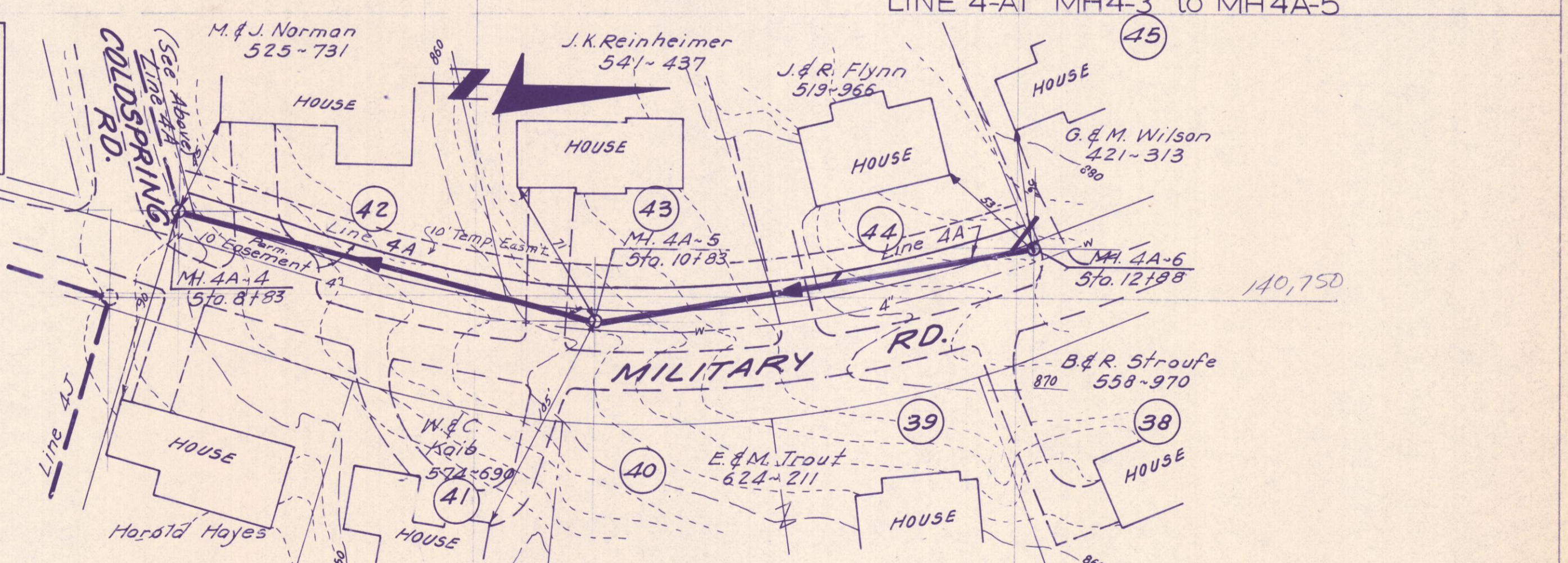


B. M. ELEV. 847.56
 (# 205 F.B. 1, PG. 25)
 R.R. SPIKE 1 FOOT UP E. SIDE
 OF P. POLE # 51322 ON S.W.
 CORNER OF COLDSRING RD.
 & MILITARY RD.

NOTE:
 CONTRACTOR ADJUST ALIGNMENT
 & LENGTH OF LINE 4A, FOR SERVICE
 CONNECTION TO LOT 54 AS PER
 OWNERS REQUEST.



Scale: Hor. 1"=50'
 Vert. 1"=10'