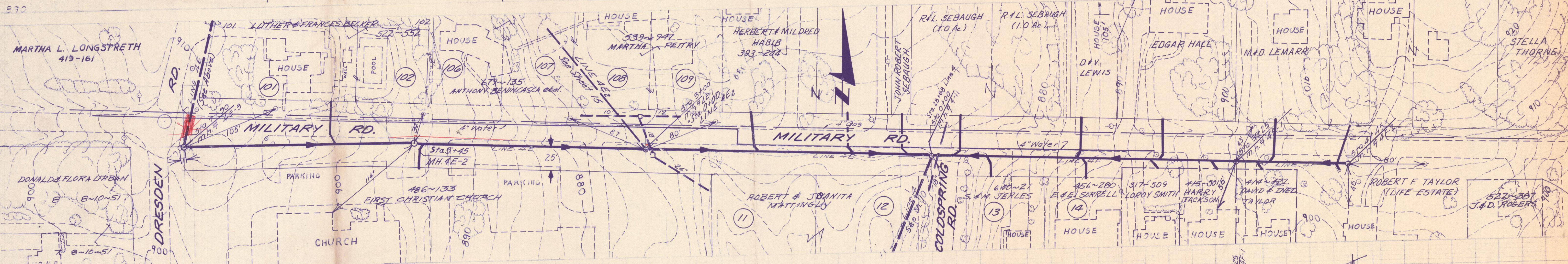
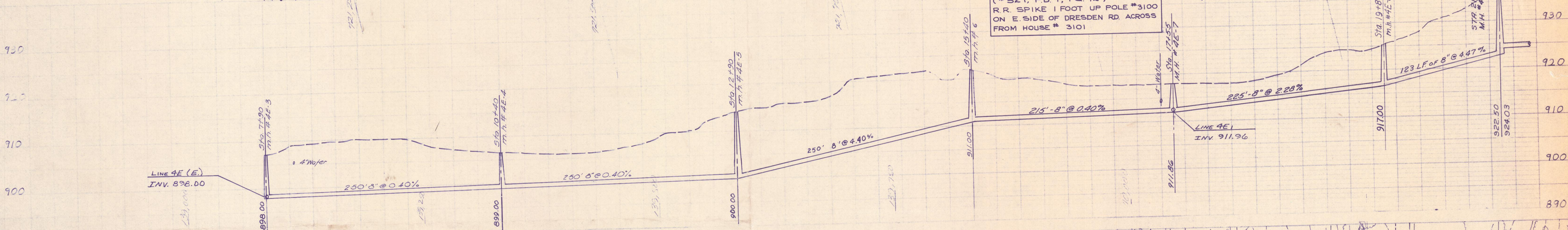
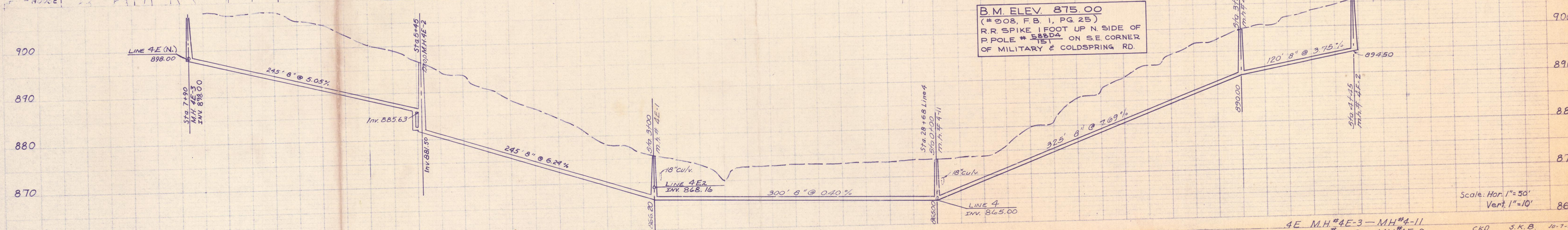


B.M. ELEV. 922.70
 (#527, F.B. 1, PG. 12)
 R.R. SPIKE 1 FOOT UP POLE #3100
 ON E SIDE OF DRESDEN RD. ACROSS
 FROM HOUSE # 3101



B.M. ELEV. 875.00
 (#908, F.B. 1, PG. 25)
 R.R. SPIKE 1 FOOT UP N. SIDE OF
 POLE # 588DA ON S.E. CORNER
 OF MILITARY & COLDSRING RD.



4E MH #4E-3 - MH #4-11
 4E MH #4E-3 - MH #4E-9
 4F MH #4-11 - MH #4F-2

Scale: Hor. 1"=50'
 Vert. 1"=10'

CKO S.K.B. 10-7-1975

CONTRACT II

Sheet 14 of 24