

727 Cambridge Road
Coshocton, Ohio 43812



LANDMARK SURVEYS

EARL R. DONAKER, P.S.

02-80-23-03-002
9625 SYMMES CREEK RD.

(614) 623-0993

1-800-842-3264

BRUNER LAND COMPANY 21.738 Acres

TRACT 5

Being 21.738 acres, more or less, part of parcel 02-80-23-03 in the northwest quarter of section 23, in the third quarter of township 3 north, range 6 west, United States Military Lands, in the township of Adams, in the county of Muskingum, in the State of Ohio, and more particularly described as follows:

Beginning at a 5/8" steel pin found at the northwest corner of section 23;

thence, with the section line, the following 4 courses:

1. thence, S.01°58'38"E. 355.73' to a 5/8" steel pin set;
2. thence, continuing S.01°58'38"E. 401.08' to a 5/8" steel pin set;
3. thence, continuing S.01°58'38"E. 415.47' to a 5/8" steel pin set;
4. thence, continuing S.01°58'38"E. 309.72' to a 5/8" steel pin set, said 5/8" steel pin set being the TRUE POINT OF BEGINNING;

thence, through the property of Bruner Land Company, 1071/126, the following 2 courses:

1. thence, N.85°19'52"E. 2634.10' to a 5/8" steel pin set;
2. thence, continuing N.85°19'52"E. 29.98' to a point on the north & south 1/4 section line;

thence, with the north & south 1/4 section line, S.01°55'41"E. 414.72' to a point in Symmes Creek Road, TR 168;

thence, with the property line of Robert E. Dixon, 1070/387, the following 2 courses:

1. thence, S.87°51'49"W. 30.00' to a 5/8" steel pin set;
2. thence, continuing S.87°51'49"W. 2630.80' to a 5/8" steel pin set on the section line;

thence, with the section line, N.01°58'38"W. 297.00' to the TRUE PLACE OF BEGINNING, containing 21.738 acres, more or less, including public road right-of-way and is subject to all easements, rights-of-way, or restrictions, whether recorded or implied.

Bearings are based on Deed Book 1071, page 126, and are for angular calculations only. (N.00°00'00"W (North)) All 5/8" steel pins set are 30" long.

Pertinent documents: tax maps: 56-01, 56-20, 02-80, 02-40, 02-70, 02-50; Deeds: 864/42, 590/43, 850/65, 850/63, 548/327, 1043/103, 557/534, 554/35, 954/328, 538/399, 548/258, 467/344, 1002/103, 1070/387, 1071/126; surveys by: Jerry Lee Gamble, Earl R. Donaker.

Prior Deed: 1071/126.

Description and plat by Landmark Surveys, Earl R. Donaker, Professional Surveyor, #7142, from a survey of the premises in the month of November, in the year of our Lord one thousand nine hundred and ninety-two.

OFFICE COPY
NOT RECORDABLE

DESCRIPTION APPROVED
FOR AUDITOR'S TRANSFER

BY J. L. Gamble 11/17/92

Remove not the old landmark. Proverbs 23:10

THIS PROPERTY IS SUBJECT TO
ALL EASEMENTS, RIGHTS-OF-WAY,
OR RESTRICTIONS, WHETHER
RECORDED OR IMPLIED.

727 Cambridge Road
Coshocton, Ohio 43812

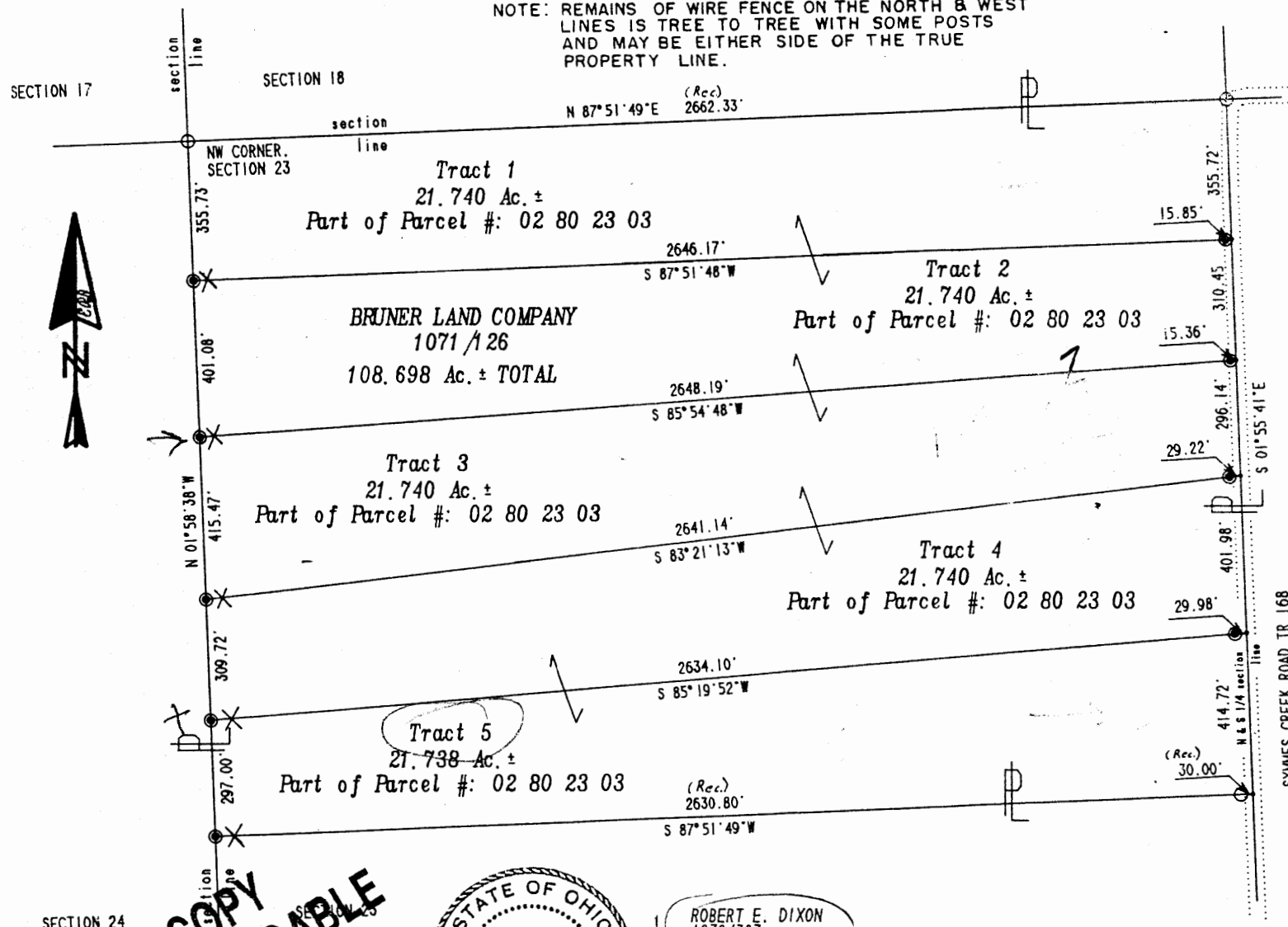
LANDMARK SURVEYS

EARL R. DONAKER, P.S.

tel: (614) 623-0993
1-800-842-3264

0 150 300 450 600
SCALE: 1" = 300'
ORIGINAL PLAT 11"X17"

NOTE: REMAINS OF WIRE FENCE ON THE NORTH & WEST
LINES IS TREE TO TREE WITH SOME POSTS
AND MAY BE EITHER SIDE OF THE TRUE
PROPERTY LINE.



Pertinent documents: Tax maps:
56-01, 56-20, 02-80, 02-40, 02-70, 02-50

Deeds: 864/42, 590/43, 850/65, 850/63,
548/327, 1043/103, 557/534, 554/35,
954/328, 538/399, 548/258, 467/344,
1002/103, 1070/387, 1071/126

Surveys by: Jerry Lee Gamble, Earl R. Donaker

Bearings are based on D.B. 864/42.
N.00°00'00"W. (NORTH) and are for angular
calculations only.

- - All 5/8" steel pins set are 30" long, plastic cap marked "ERD 7142"
- - 5/8" steel pin found
- - point
- ✕ - fiberglass rod set on line

NOTE:
All distances between monumentation
was measured.
Distances to points were calculated.
Record distances as marked. (Rec.)

BRUNER LAND COMPANY, 1071/126
ACRES: 108.698
SECTION: 23
THIRD QUARTER, T 3N, R 6W.
UNITED STATES MILITARY LANDS
TOWNSHIP: ADAMS
COUNTY: MUSKINGUM, OHIO
DATE: NOVEMBER, 1992

SECTION 24



ROBERT E. DIXON
1070/387

DESCRIPTION APPROVED
FOR AUDITOR'S TRANSFER

BY *JL Hamble*
11-17-92

"Remove not the old landmark." Proverbs 23:10

1. Earl R. Donaker, P.S. 7142, hereby
certify this map to represent a boundary
survey pursuant to Chapter 4733-37, Ohio
Administrative Code, and to be correct to
the best of my knowledge and belief.