



# LANDMARK SURVEYS

727 Cambridge Road  
Coshocton, Ohio 43812

EARL R. DONAKER, P.S.

(614) 623-0993  
1-800-842-3264

BRUNER LAND COMPANY 21.740 Acres

## TRACT 2

Being 21.740 acres, more or less, part of parcel 02-80-23-03 in the northwest quarter of section 23, in the third quarter of township 3 north, range 6 west, United States Military Lands, in the township of Adams, in the county of Muskingum, in the State of Ohio, and more particularly described as follows:

Beginning at a 5/8" steel pin found at the northwest corner of section 23;

thence, with the section line, S.01°58'38"E. 355.73' to a 5/8" steel pin set, said 5/8" steel pin set being the TRUE POINT OF BEGINNING;

thence, through the property of Bruner Land Company, 1071/126, the following 2 courses:

1. thence, N.87°51'48"E. 2646.17' to a 5/8" steel pin set;
2. thence, continuing N.87°51'48"E. 15.85' to a point on the north & south 1/4 section line;

thence, with the north & south 1/4 section line, S.01°55'41"E. 310.45' to a point in Symmes Creek Road, TR 168;

thence, through the property of Bruner Land Company, 1071/126, the following 2 courses:

1. thence, S.85°54'48"W. 15.36' to a 5/8" steel pin set;
2. thence, continuing S.85°54'48"W. 2648.19' to a 5/8" steel pin set on the section line;

thence, with the section line, N.01°58'38"W. 401.08' to the TRUE PLACE OF BEGINNING, containing 21.740 acres, more or less, including public road right-of-way and is subject to all easements, rights-of-way, or restrictions, whether recorded or implied.

Bearings are based on Deed Book 1071, page 126, and are for angular calculations only. ( N.00°00'00"W ( North ) ) All 5/8" steel pins set are 30" long.

Pertinent documents: tax maps: 56-01, 56-20, 02-80, 02-40, 02-70, 02-50; Deeds: 864/42, 590/43, 850/65, 850/63, 548/327, 1043/103, 557/534, 554/35, 954/328, 538/399, 548/258, 467/344, 1002/103, 1071/126; surveys by: Jerry Lee Gamble, Earl R. Donaker.

Prior Deed: 1071/126.

Description and plat by Landmark Surveys, Earl R. Donaker, Professional Surveyor, #7142, from a survey of the premises in the month of November, in the year of our Lord one thousand nine hundred and ninety-two.

OFFICE COPY  
NOT RECORDABLE

DESCRIPTION APPROVED  
FOR AUDITOR'S TRANSFER

BY J L Gamble  
11-17-92

THIS PROPERTY IS SUBJECT TO  
ALL EASEMENTS, RIGHTS-OF-WAY,  
OR RESTRICTIONS, WHETHER  
RECORDED OR IMPLIED.

727 Cambridge Road  
Coshocton, Ohio 43812

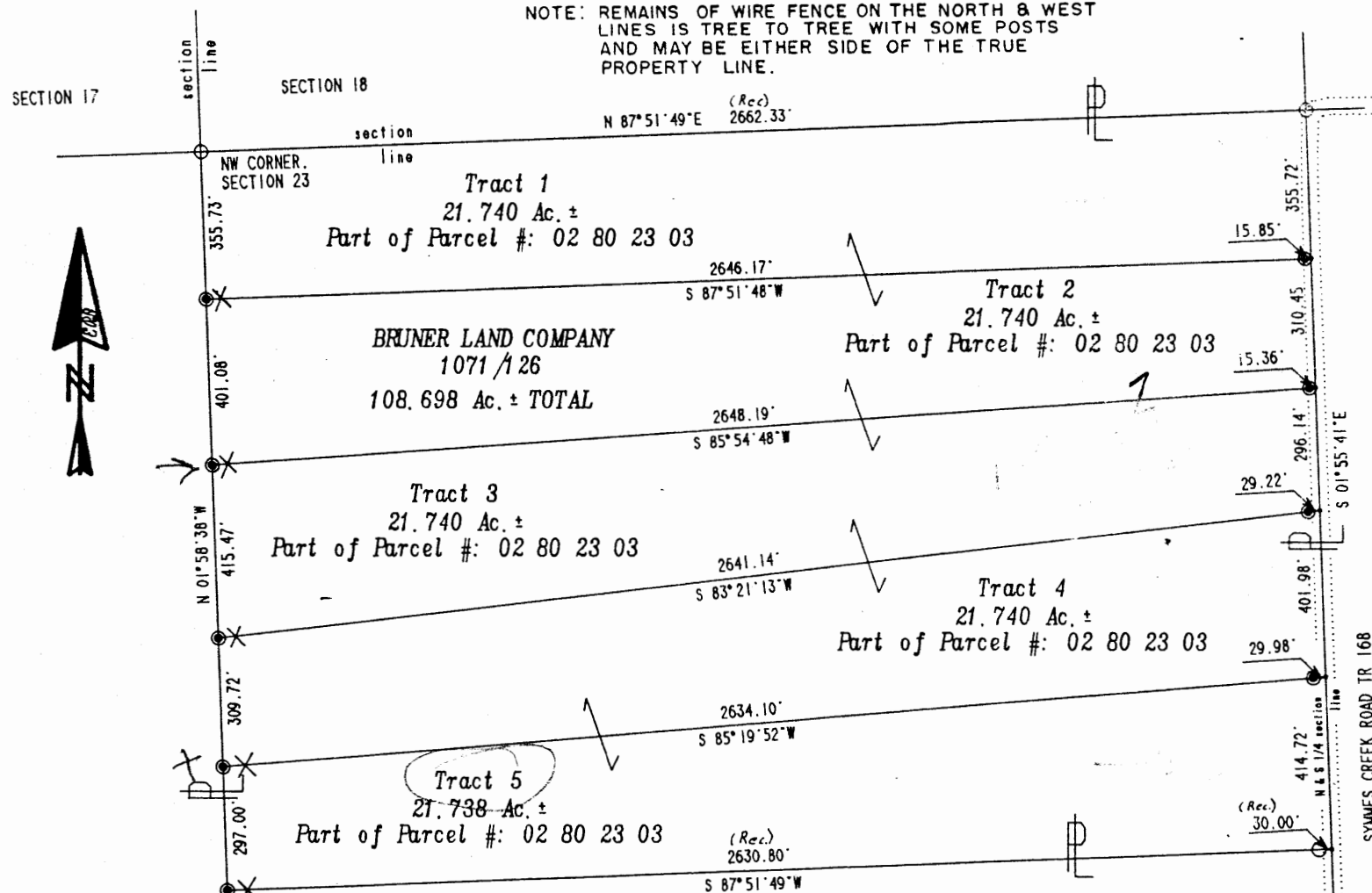
# LANDMARK SURVEYS

EARL R. DONAKER, P.S.

tel: (614) 623-0993  
1-800-842-3264

0 150 300 450 600  
SCALE: 1" = 300'  
ORIGINAL PLAT 11"X17"

NOTE: REMAINS OF WIRE FENCE ON THE NORTH & WEST  
LINES IS TREE TO TREE WITH SOME POSTS  
AND MAY BE EITHER SIDE OF THE TRUE  
PROPERTY LINE.



Pertinent documents: Tax maps:  
56-01, 56-20, 02-80, 02-40, 02-70, 02-50

Deeds: 864/42, 590/43, 850/65, 850/63,  
548/327, 1043/103, 557/534, 554/35,  
954/328, 538/399, 548/258, 467/344,  
1002/103, 1070/387, 1071/126

Surveys by: Jerry Lee Gamble, Earl R. Donaker

Bearings are based on D.B. 864/42,  
N.00°00'00"W. (NORTH) and are for angular  
calculations only.

- All 5/8" steel pins set are 30" long, plastic cap marked "ERD 7142"
- - 5/8" steel pin found
- - point
- ✕ - fiberglass rod set on line

NOTE:  
All distances between monumentation  
was measured.  
Distances to points were calculated.  
Record distances as marked. (Rec.)

SECTION 24

OFFICE COPY  
NOT RECORDABLE



ROBERT E. DIXON  
1070/387

DESCRIPTION APPROVED  
FOR AUDITOR'S TRANSFER

BY *JL Gamble*  
11-17-92

BRUNER LAND COMPANY, 1071/126
ACRES: 108.698
SECTION: 23
THIRD QUARTER, T 3N, R 6W,
UNITED STATES MILITARY LANDS
TOWNSHIP: ADAMS
COUNTY: MUSKINGUM, OHIO
DATE: NOVEMBER, 1992

"Remove not the old landmark." Proverbs 23:10

## LANDMARK SURVEYS

727 Cambridge Road  
Coshocton, Ohio 43812

EARL R. DONAKER, P.S.

(614) 623-0993  
1-800-842-3264

BRUNER LAND COMPANY 21.740 Acres

## TRACT 3

Being 21.740 acres, more or less, part of parcel 02-80-23-03 in the northwest quarter of section 23, in the third quarter of township 3 north, range 6 west, United States Military Lands, in the township of Adams, in the county of Muskingum, in the State of Ohio, and more particularly described as follows:

Beginning at a 5/8" steel pin found at the northwest corner of section 23;

thence, with the section line, the following 2 courses:

1. thence, S.01°58'38"E. 355.73' to a 5/8" steel pin set;
2. thence, continuing S.01°58'38"E. 401.08' to a 5/8" steel pin set, said 5/8" steel pin set being the TRUE POINT OF BEGINNING;

thence, through the property of, Bruner Land Company, 1071/126, the following 2 courses:

1. thence, N.85°54'48"E. 2648.19' to a 5/8" steel pin set;
2. thence, continuing N.85°54'48"E. 15.36' to a point on the north & south 1/4 section line;

thence, with the north & south 1/4 section line, S.01°55'41"E. 296.14' to a point in Symmes Creek Road, TR 168;

thence, through the property of Bruner Land Company, 1071/126, the following 2 courses:

1. thence, S.83°21'13"W. 29.22' to a 5/8" steel pin set;
2. thence, continuing S.83°21'13"W. 2641.14' to a 5/8" steel pin set on the section line;

thence, with the section line, N.01°58'38"W. 415.47' to the TRUE PLACE OF BEGINNING, containing 21.740 acres, more or less, including public road right-of-way and is subject to all easements, rights-of-way, or restrictions, whether recorded or implied.

Bearings are based on Deed Book 1071, page 126, and are for angular calculations only. ( N.00°00'00"W ( North ) ) All 5/8" steel pins set are 30" long.

Pertinent documents: tax maps: 56-01, 56-20, 02-80, 02-40, 02-70, 02-50; Deeds: 864/42, 590/43, 850/65, 850/63, 548/327, 1043/103, 557/534, 554/35, 954/328, 538/399, 548/258, 467/344, 1002/103, 1071/126; surveys by: Jerry Lee Gamble, Earl R. Donaker.

Prior Deed: 1071/126.

Description and plat by Landmark Surveys, Earl R. Donaker, Professional Surveyor, #7142, from a survey of the premises in the month of November, in the year of our Lord one thousand nine hundred and ninety-two.

OFFICE COPY  
NOT RECORDABLE

DESCRIPTION APPROVED  
FOR AUDITOR'S TRANSFER

by J. L. Gamble  
11-17-92

Remove not the old landmark. Proverbs 23:10

727 Cambridge Road  
Coshocton, Ohio 43812

## LANDMARK SURVEYS

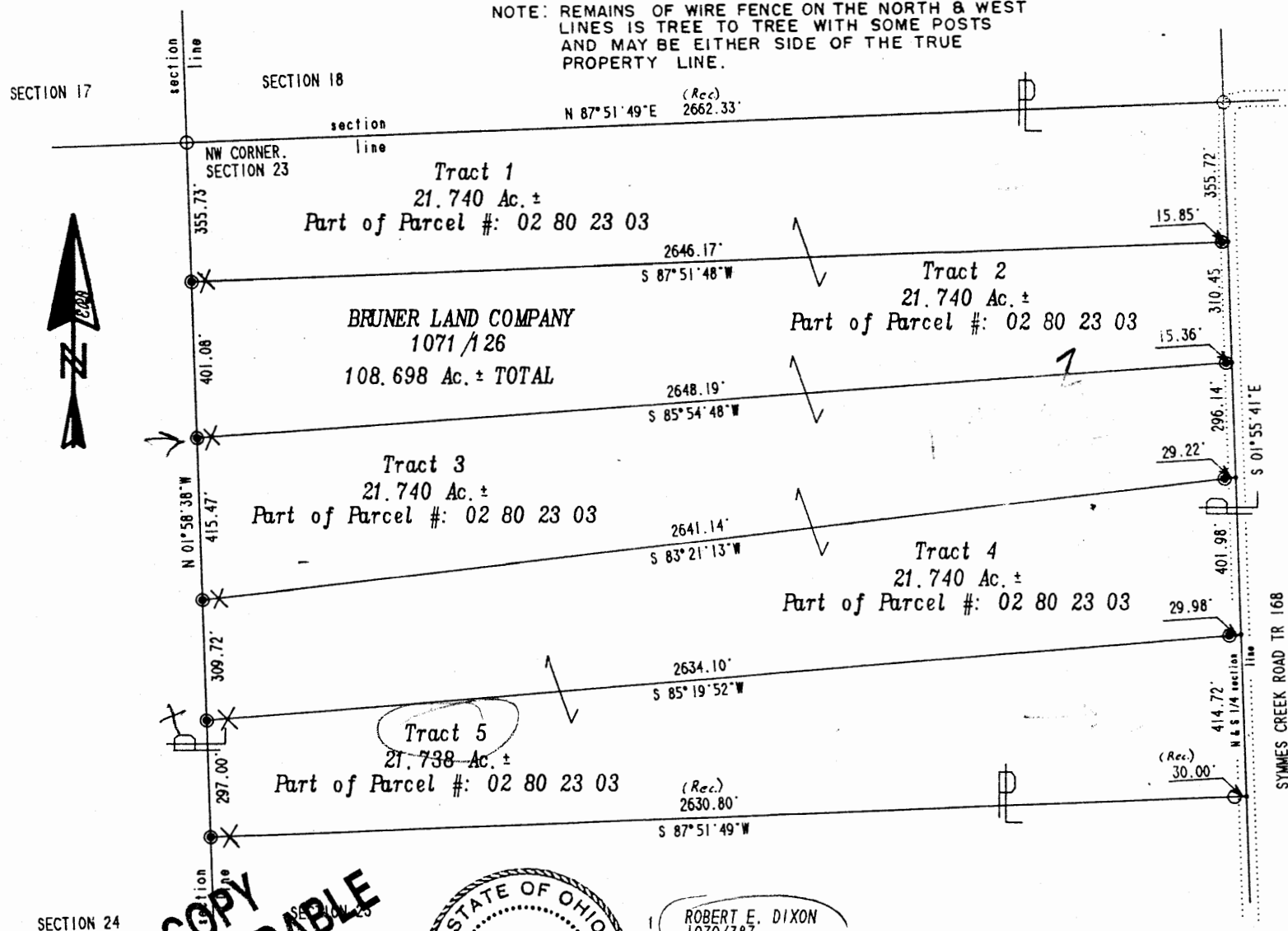
**EARL R. DONAKER, P. S.**

tel: (614) 623-0993  
1-800-842-3264



SCALE: 1" = 300'  
ORIGINAL PLAT 11"X17"

NOTE: REMAINS OF WIRE FENCE ON THE NORTH & WEST  
LINES IS TREE TO TREE WITH SOME POSTS  
AND MAY BE EITHER SIDE OF THE TRUE  
PROPERTY LINE.



Pertinent documents: Tax maps:  
56-01, 56-20, 02-80, 02-40, 02-70, 02-50

Deeds: 864/42. 590/43. 850/65. 850/63.  
548/327. 1043/103. 557/534. 554/35.  
954/328. 538/399. 548/258. 467/344.  
1002/103. 1070/387. 1071/126

Surveys by: Jerry Lee Gamble, Earl R. Donaker

Bearings are based on D.B. 864/42.  
N.00°00'00"W. (NORTH) and are for angular  
calculations only.

- - All 5/8" steel pins set are 30" long, plastic cap marked "ERD 7142"
- - 5/8" steel pin found
- - point
- + fiberglass rod set on line

NOTE:  
All distances between monumentation  
was measured.  
Distances to points were calculated.  
Record distances as marked. (Rec.)

SECTION 24



ROBERT E. DIXON  
1070/387

DESCRIPTION APPROVED  
FOR AUDITOR'S TRANSFER

BY JL Nambh  
11-17-92

"Remove not the old landmark." Proverbs 23:10

BRUNER LAND COMPANY. 1071/126
ACRES: 108.698
SECTION: 23
THIRD QUARTER. T 3N. R 6W.
UNITED STATES MILITARY LANDS
TOWNSHIP: ADAMS
COUNTY: MUSKINGUM. OHIO
DATE: NOVEMBER. 1992