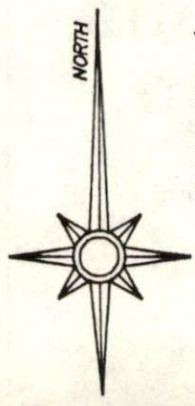
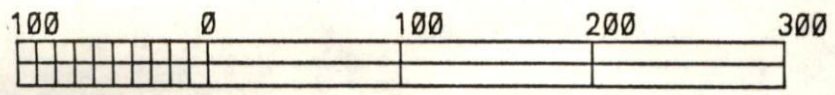


SURVEY PLAT FOR JOHN SCHILLING

JOB #180
PLAT #01



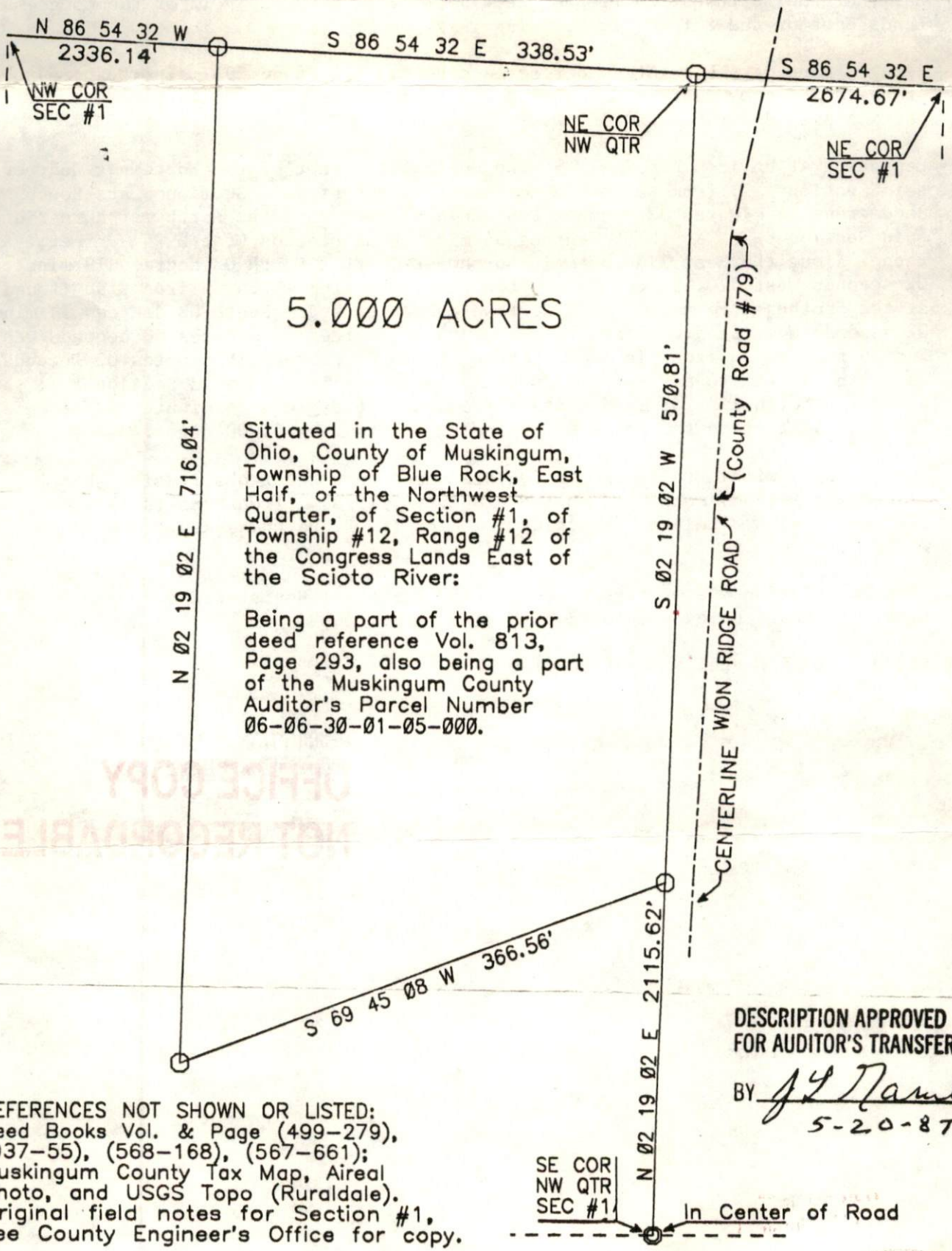
The bearings on this plat are based on:
a Solar Observation
(Local Hour Angle
Method) completed on the
property 5-15-87.



GRAPHIC SCALE - 1" = 100'

LEGEND

- ⊞ STONE (FOUND)
- ⊗ AXLE (FOUND)
- ⊙ IRON PIPE (FOUND)
- ⊙ IRON PIN (FOUND)
- ⊙ RAILROAD SPIKE (FOUND)
- ⊕ NAIL (FOUND)
- IRON PIN (SET) 5/8" REBAR 34" IN LENGTH WITH ALUMINUM IDENTIFICATION CAP (C.R. HARKNESS RS 6885).



Situated in the State of Ohio, County of Muskingum, Township of Blue Rock, East Half, of the Northwest Quarter, of Section #1, of Township #12, Range #12 of the Congress Lands East of the Scioto River:

Being a part of the prior deed reference Vol. 813, Page 293, also being a part of the Muskingum County Auditor's Parcel Number 06-06-30-01-05-000.

DESCRIPTION APPROVED
FOR AUDITOR'S TRANSFER
BY J. J. Nambel
5-20-87

REFERENCES NOT SHOWN OR LISTED:
Deed Books Vol. & Page (499-279),
(937-55), (568-168), (567-661);
Muskingum County Tax Map, Aerial
Photo, and USGS Topo (Ruraldale).
Original field notes for Section #1,
see County Engineer's Office for copy.

SE COR
NW QTR
SEC #1
In Center of Road

This survey plat was prepared by Charles R. Harkness
Registered Surveyor #6885 from an actual survey completed
on May 15, 1987.

OFFICE COPY
Charles R. Harkness
NOT RECORDABLE
CHARLES R. HARKNESS

SEAL
B/R
1-1