

B. RAYNER

AUDITORS PARCEL NUMBER 06-06-50-16-13-000 (ALL)

AUDITORS PARCEL NUMBER 06-06-50-21-11-000 (ALL)

AUDITORS PARCEL NUMBER 06-06-50-21-12-000 (ALL)

SITUATED IN SECTION 16 AND SECTION 21, TOWNSHIP 12, RANGE 12, OF THE CONGRESS LANDS EAST OF THE SCIOTO RIVER, BLUE ROCK TOWNSHIP, MUSKINGUM COUNTY, OHIO AND BEING ALL OF THE TRACT CONVEYED TO BESSIE RAYNER BY DEED RECORDED IN VOLUME 565, PAGE 309 OF THE MUSKINGUM COUNTY DEED RECORDS, AND BEING FURTHER DESCRIBED AS FOLLOWS:

COMMENCING AT AN EXISTING IRON PIN AT THE SOUTHEAST CORNER OF THE SOUTHWEST QUARTER OF SECTION 16, SAID IRON PIN BEING NORTH 02 DEGREES 54 MINUTES 22 SECONDS WEST 2647.82 FEET FROM AN EXISTING STONE AT THE CENTER OF SECTION 21;

THENCE SOUTH 86 DEGREES 48 MINUTES 59 SECONDS WEST, ALONG THE SOUTH LINE OF SECTION 16, 300.61 FEET TO AN EXISTING IRON PIN (5/8 INCH REBAR), AT THE SOUTHWEST CORNER OF A TRACT CONVEYED TO R. E. BAKER (DEED VOLUME 246, PAGE 309 AND VOLUME 305, PAGE 607), SAID IRON PIN BEING THE PLACE OF BEGINNING OF THE TRACT HEREIN INTENDED TO BE DESCRIBED;

THENCE CONTINUING WITH THE SAID SECTION LINE, SOUTH 86 DEGREES 48 MINUTES 59 SECONDS WEST 220.81 FEET TO AN EXISTING IRON PIN (5/8 INCH REBAR);

THENCE LEAVING THE SAID SECTION LINE AND WITH THE WEST LINE OF TRACT 5 OF A SURVEY OF TRACTS FOR BRUNER LAND COMPANY (SURVEY BY ROGER W. CLAUS DATED AUGUST 29, 1989), SOUTH 00 DEGREES 40 MINUTES 37 SECONDS WEST 1023.00 FEET TO AN EXISTING IRON PIN (5/8 INCH REBAR), PASSING AN EXISTING IRON PIN (5/8 INCH REBAR) AT 723.67 FEET;

THENCE CONTINUING WITH THE NORTH LINES OF TRACTS 1 THROUGH 4 OF THE SAID BRUNER LAND COMPANY SURVEY, SOUTH 57 DEGREES 36 MINUTES 59 SECONDS WEST 808.50 FEET TO AN EXISTING IRON PIN (5/8 INCH REBAR), PASSING AN EXISTING IRON PIN (5/8 INCH REBAR) AT 329.19 FEET;

THENCE WITH THE EAST LINE OF A TRACT CONVEYED TO B. J. ORCUTT (DEED VOLUME 843, PAGE 140), NORTH 03 DEGREES 19 MINUTES 06 SECONDS WEST 924.00 FEET TO AN EXISTING IRON PIN (5/8 INCH REBAR);

THENCE WITH THE NORTH LINE OF THE SAID ORCUTT TRACT, SOUTH 86 DEGREES 38 MINUTES 56 SECONDS WEST 1322.39 FEET TO AN EXISTING IRON PIN (5/8 INCH REBAR), ON THE WEST LINE OF SECTION 21;

THENCE WITH THE SAID WEST LINE OF SECTION 21, NORTH 02 DEGREES 45 MINUTES 22 SECONDS WEST 990.00 FEET TO AN EXISTING IRON PIN (5/8 INCH REBAR), PASSING THE NORTHWEST CORNER OF SECTION 21 AT 495.00 FEET;

THENCE WITH THE SOUTH LINE OF A TRACT CONVEYED TO LITCO INTERNATIONAL (59.056 ACRE TRACT-DEED VOLUME 1025, PAGE 442) NORTH 86 DEGREES 48 MINUTES 59 SECONDS EAST 1316.50 FEET TO AN EXISTING IRON PIN (5/8 INCH REBAR), PASSING AN EXISTING IRON PIN (5/8 INCH REBAR) AT 729.50 FEET;

THENCE WITH THE EAST LINE OF THE SAID LITCO TRACT, NORTH 03 DEGREES 05 MINUTES 47 SECONDS WEST 1155.00 FEET TO AN EXISTING IRON PIN (5/8 INCH REBAR), PASSING AN EXISTING IRON PIN (5/8 INCH REBAR) AT 538.60 FEET;

THENCE WITH THE SOUTH LINE OF THE SAID LITCO TRACT (110.572 ACRE), NORTH 86 DEGREES 48 MINUTES 59 SECONDS EAST 32.98 FEET TO A POINT IN THE CENTER OF TOWNSHIP ROAD 227 (SHAVER ROAD);

THENCE WITH THE SAID CENTER OF THE TOWNSHIP ROAD THE NEXT 25 COURSES AND DISTANCES:

- 1) SOUTH 14 DEGREES 32 MINUTES 23 SECONDS EAST 24.04 FEET TO A POINT;
- 2) SOUTH 22 DEGREES 21 MINUTES 35 SECONDS EAST 69.13 FEET TO A POINT;
- 3) SOUTH 23 DEGREES 01 MINUTES 05 SECONDS EAST 178.47 FEET TO A POINT;
- 4) SOUTH 23 DEGREES 31 MINUTES 44 SECONDS EAST 72.11 FEET TO A POINT;
- 5) SOUTH 35 DEGREES 22 MINUTES 19 SECONDS EAST 71.72 FEET TO A POINT;

Biedenbach Engineering

3975 East Pike
Zanesville, OH 43701

Telephone (740) 453-4850
Fax (740) 450-1000

- 6) SOUTH 44 DEGREES 44 MINUTES 47 SECONDS EAST 93.78 FEET TO A POINT;
- 7) SOUTH 41 DEGREES 11 MINUTES 22 SECONDS EAST 64.94 FEET TO A POINT;
- 8) SOUTH 33 DEGREES 43 MINUTES 45 SECONDS EAST 65.42 FEET TO A POINT;
- 9) SOUTH 32 DEGREES 21 MINUTES 01 SECONDS EAST 91.15 FEET TO A POINT;
- 10) SOUTH 28 DEGREES 53 MINUTES 52 SECONDS EAST 51.04 FEET TO A POINT;
- 11) SOUTH 25 DEGREES 36 MINUTES 40 SECONDS EAST 47.33 FEET TO A POINT;
- 12) SOUTH 17 DEGREES 47 MINUTES 50 SECONDS EAST 49.35 FEET TO A POINT;
- 13) SOUTH 14 DEGREES 09 MINUTES 18 SECONDS EAST 53.56 FEET TO A POINT;
- 14) SOUTH 19 DEGREES 59 MINUTES 03 SECONDS EAST 44.64 FEET TO A POINT;
- 15) SOUTH 31 DEGREES 06 MINUTES 04 SECONDS EAST 49.61 FEET TO A POINT;
- 16) SOUTH 41 DEGREES 19 MINUTES 37 SECONDS EAST 48.70 FEET TO A POINT;
- 17) SOUTH 47 DEGREES 48 MINUTES 41 SECONDS EAST 88.75 FEET TO A POINT;
- 18) SOUTH 52 DEGREES 57 MINUTES 15 SECONDS EAST 38.38 FEET TO A POINT;
- 19) SOUTH 59 DEGREES 35 MINUTES 42 SECONDS EAST 53.59 FEET TO A POINT;
- 20) SOUTH 72 DEGREES 36 MINUTES 27 SECONDS EAST 51.70 FEET TO A POINT;
- 21) SOUTH 80 DEGREES 51 MINUTES 03 SECONDS EAST 51.14 FEET TO A POINT;
- 22) SOUTH 81 DEGREES 17 MINUTES 22 SECONDS EAST 95.53 FEET TO A POINT;
- 23) SOUTH 73 DEGREES 51 MINUTES 27 SECONDS EAST 54.10 FEET TO A POINT;
- 24) SOUTH 69 DEGREES 23 MINUTES 58 SECONDS EAST 55.82 FEET TO A POINT;
- 25) SOUTH 68 DEGREES 29 MINUTES 27 SECONDS EAST 80.44 FEET TO A POINT;

THENCE LEAVING THE SAID ROAD AND WITH THE EAST LINE OF THE ABOVE SAID BAKER TRACT, SOUTH 02 DEGREES 54 MINUTES 22 SECONDS EAST 452.29 FEET TO THE PLACE OF BEGINNING, PASSING AN IRON PIN SET AT 35.00 FEET.

CONTAINING 70.353 MORE OR LESS ACRES, SUBJECT TO ALL APPLICABLE EASEMENTS.

THE BEARINGS ARE BASED ON THE PREVIOUS SURVEY OF THE NORTH LINE OF SECTION 16 AS PERFORMED BY R. M. ROBERTS, REGISTERED SURVEYOR #5803, DATED JULY 6, 1973.

I HEREBY CERTIFY TO THE BEST OF MY KNOWLEDGE AND BELIEF THE SURVEY AND DESCRIPTION TO BE CORRECT AS PREPARED BY ME, THIS 24th DAY OF JANUARY 2001, FROM AN ACTUAL FIELD SURVEY COMPLETED BY ME ON THE 24th DAY OF JANUARY 2001 AND FROM A PREVIOUS SURVEY COMPLETED BY W. J. BIEDENBACH AND ASSOCIATES ON THE 25th DAY OF JANUARY 1989.

MICHAEL D. NICHOLS
REGISTERED SURVEYOR 6923

DESCRIPTION APPROVED
FOR AUDITOR'S TRANSFER
BY *[Signature]*
1-29-2001

SURVEY FOR ROBERT RAYNER

AUDITORS PARCEL NUMBERS

06-06-50-16-13-000 (ALL) - 34.819 ± ACRES

06-06-50-21-11-000 (ALL) - 14.941 ± ACRES

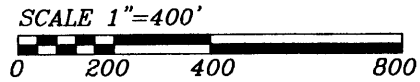
06-06-50-21-12-000 (ALL) - 20.593 ± ACRES

SITUATED IN SECTION 16 AND SECTION 21, TOWNSHIP 12, RANGE 12, OF THE CONGRESS LANDS EAST OF THE SCIOTO RIVER, BLUE ROCK TOWNSHIP, MUSKINGUM COUNTY, OHIO AND BEING ALL OF THE TRACT CONVEYED TO BESSIE RAYNER BY DEED RECORDED IN VOLUME 565, PAGE 309 OF THE MUSKINGUM COUNTY DEED RECORDS.

THE BEARINGS ARE BASED ON THE PREVIOUS SURVEY OF THE NORTH LINE OF SECTION 16 AS PERFORMED BY R. M. ROBERTS, REGISTERED SURVEYOR #5803, DATED JULY 6, 1973.

LINE DATA		
No.	BEARING	DISTANCE
1	S.14°32'23"E.	24.04'
2	S.22°21'35"E.	69.13'
3	S.23°01'05"E.	178.47'
4	S.23°31'44"E.	72.11'
5	S.35°22'19"E.	71.72'
6	S.44°44'47"E.	93.78'
7	S.41°11'22"E.	64.94'
8	S.33°43'45"E.	65.42'
9	S.32°21'01"E.	91.15'
10	S.28°53'52"E.	51.04'
11	S.25°36'40"E.	47.33'
12	S.17°47'50"E.	49.35'
13	S.14°09'18"E.	53.56'
14	S.19°59'03"E.	44.64'
15	S.31°06'04"E.	49.61'
16	S.41°19'37"E.	48.70'
17	S.47°48'41"E.	88.75'
18	S.52°57'15"E.	38.38'
19	S.59°35'42"E.	53.59'
20	S.72°36'27"E.	51.70'
21	S.80°51'03"E.	51.14'
22	S.81°17'22"E.	95.53'
23	S.73°51'27"E.	54.10'
24	S.69°23'58"E.	55.82'
25	S.68°29'27"E.	80.44'

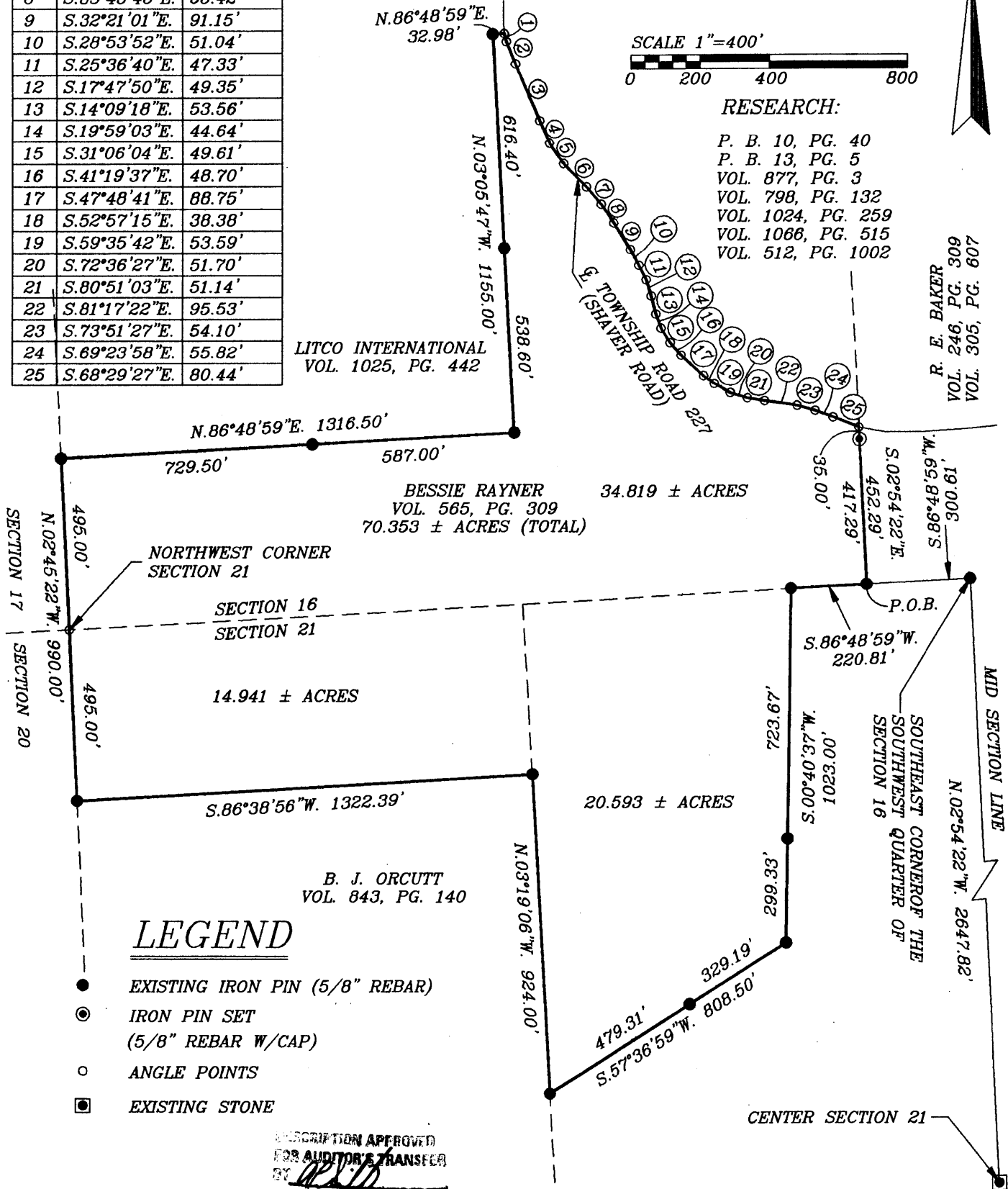
LITCO INTERNATIONAL
VOL. 1025, PG. 442



RESEARCH:

P. B. 10, PG. 40
P. B. 13, PG. 5
VOL. 877, PG. 3
VOL. 798, PG. 132
VOL. 1024, PG. 259
VOL. 1066, PG. 515
VOL. 512, PG. 1002

R. E. BAKER
VOL. 246, PG. 309
VOL. 305, PG. 607



LEGEND

- EXISTING IRON PIN (5/8" REBAR)
- ⊙ IRON PIN SET (5/8" REBAR W/CAP)
- ANGLE POINTS
- EXISTING STONE

DESCRIPTION APPROVED
FOR AUDITOR'S TRANSFER
BY [Signature]
1-29-2001

I HEREBY CERTIFY TO THE BEST OF MY KNOWLEDGE AND BELIEF THE ABOVE PLAT AND SURVEY TO BE CORRECT AS PREPARED BY ME, THIS 24th DAY OF JANUARY 2001, FROM AN ACTUAL FIELD SURVEY COMPLETED THE 24th DAY OF JANUARY 2001 AND FROM A PREVIOUS SURVEY COMPLETED THE 25th DAY OF JANUARY 1973 BY W.J. BIEDENBACH AND ASSOCIATES.

MICHAEL D. NICHOLS
REGISTERED SURVEYOR #6923

BIEDENBACH ENGINEERING
ZANESVILLE, OHIO
(740) 453-4850

DRAWN BY: AJS	DATE: 01-25-01
SCALE: 1"=400'	CHECKED BY: MDN
JOB NO: 4632	DRAWING NO: D:\4632\4632

OFFICE COPY
NOT RECORDABLE

ADDRESS N/A

SURVEY FOR ROBERT RAYNER

AUDITORS PARCEL NUMBERS

06-06-50-16-13-000 (ALL) - 34.819 ± ACRES -
 06-06-50-21-11-000 (ALL) - 14.941 ± ACRES -
 06-06-50-21-12-000 (ALL) - 20.593 ± ACRES

SITUATED IN SECTION 16 AND SECTION 21, TOWNSHIP 12, RANGE 12,
 OF THE CONGRESS LANDS EAST OF THE SCIOTO RIVER, BLUE ROCK
 TOWNSHIP, MUSKINGUM COUNTY, OHIO AND BEING ALL OF THE TRACT
 CONVEYED TO BESSIE RAYNER BY DEED RECORDED IN VOLUME 565,
 PAGE 309 OF THE MUSKINGUM COUNTY DEED RECORDS.

THE BEARINGS ARE BASED ON THE PREVIOUS SURVEY OF THE
 NORTH LINE OF SECTION 16 AS PERFORMED BY R. M. ROBERTS,
 REGISTERED SURVEYOR #5803, DATED JULY 6, 1973.

LINE DATA		
No.	BEARING	DISTANCE
1	S.14°32'23"E.	24.04'
2	S.22°21'35"E.	69.13'
3	S.23°01'05"E.	178.47'
4	S.23°31'44"E.	72.11'
5	S.35°22'19"E.	71.72'
6	S.44°44'47"E.	93.78'
7	S.41°11'22"E.	64.94'
8	S.33°43'45"E.	65.42'
9	S.32°21'01"E.	91.15'
10	S.28°53'52"E.	51.04'
11	S.25°36'40"E.	47.33'
12	S.17°47'50"E.	49.35'
13	S.14°09'18"E.	53.56'
14	S.19°59'03"E.	44.64'
15	S.31°06'04"E.	49.61'
16	S.41°19'37"E.	48.70'
17	S.47°48'41"E.	88.75'
18	S.52°57'15"E.	38.38'
19	S.59°35'42"E.	53.59'
20	S.72°36'27"E.	51.70'
21	S.80°51'03"E.	51.14'
22	S.81°17'22"E.	95.53'
23	S.73°51'27"E.	54.10'
24	S.69°23'58"E.	55.82'
25	S.68°29'27"E.	80.44'

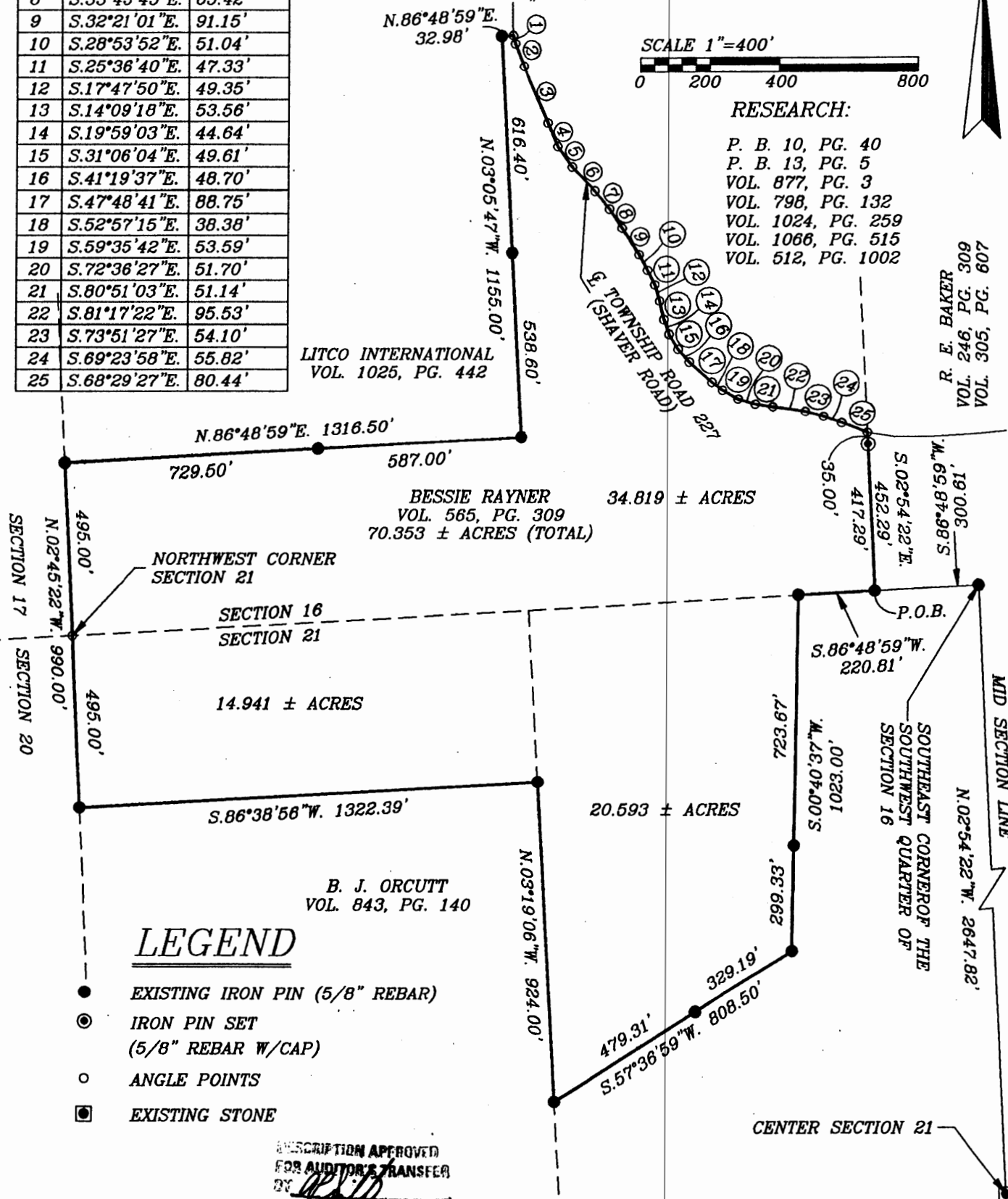
LITCO INTERNATIONAL
 VOL. 1025, PG. 442

SCALE 1"=400'
 0 200 400 800

RESEARCH:

P. B. 10, PG. 40
 P. B. 13, PG. 5
 VOL. 877, PG. 3
 VOL. 798, PG. 132
 VOL. 1024, PG. 259
 VOL. 1066, PG. 515
 VOL. 512, PG. 1002

R. E. BAKER
 VOL. 246, PG. 309
 VOL. 305, PG. 607



LEGEND

- EXISTING IRON PIN (5/8" REBAR)
- ⊙ IRON PIN SET (5/8" REBAR W/CAP)
- ANGLE POINTS
- EXISTING STONE

DESCRIPTION APPROVED
 FOR AUDITOR'S TRANSFER
 BY *[Signature]*
 (1-29-2001)

I HEREBY CERTIFY TO THE BEST OF MY KNOWLEDGE
 AND BELIEF THE ABOVE PLAT AND SURVEY TO BE CORRECT
 AS PREPARED BY ME, THIS 24th DAY OF JANUARY 2001,
 FROM AN ACTUAL FIELD SURVEY COMPLETED THE 24th DAY
 OF JANUARY 2001 AND FROM A PREVIOUS SURVEY
 COMPLETED THE 25th DAY OF JANUARY 1989 BY W.J.
 BIEDENBACH AND ASSOCIATES.

MICHAEL D. NICHOLS
 REGISTERED SURVEYOR #6923

BIEDENBACH ENGINEERING
 ZANESVILLE, OHIO
 (740) 453-4850

DRAWN BY: AJS	DATE: 01-25-01
SCALE: 1"=400'	CHECKED BY: MDN
JOB NO: 4632	DRAWING NO: D:\4632\4632