

Being a part of Fractional Section 32, Township 12, Range 12, Blue Rock Township, Muskingum County, Ohio and being further described as follows:

Commencing at a point at the intersection of the North Line of Section 32 and the centerline of State Route sixty (station 558+79), said point being West 4439.00 feet (by deed) from the Northeast Corner of Section 32; thence South 29 degrees 00 minutes 00 seconds East 1033.23 feet to a point in the center of State Route sixty (P.T. Station 548+45.77); thence with a curve to the left having a radius of 8593.94 feet (chord bearing South 32 degrees 40 minutes 38 seconds East 1102.35 feet) an arc distance of 1103.11 feet to a point in the center of State Route sixty, said point being the place of beginning of this tract; thence North 64 degrees 20 minutes 28 seconds East 255.72 feet to a point marked by an iron pin, passing a point marked by an iron pin at 21.18 feet; thence South 23 degrees 16 minutes 52 seconds East 65.00 feet to a point marked by an iron pin; thence South 64 degrees 20 minutes 28 seconds West 240.50 feet to a point in the center of State Route sixty, said point being in the center of a concrete culvert, passing a point marked by an iron pin at 220.09 feet; thence continuing South 64 degrees 20 minutes 28 seconds West 89.44 feet to a point on the low water mark of the Muskingum River, passing a point marked by an iron pin at 69.44 feet; thence North 36 degrees 19 minutes 52 seconds West 66.09 feet to a point on the low water mark of the Muskingum River; thence North 64 degrees 20 minutes 28 seconds East 89.15 feet to the place of beginning, passing a point marked by an iron pin at 20.00 feet.

Containing 0.503 more or less acres, subject to all legal road right-of-ways.

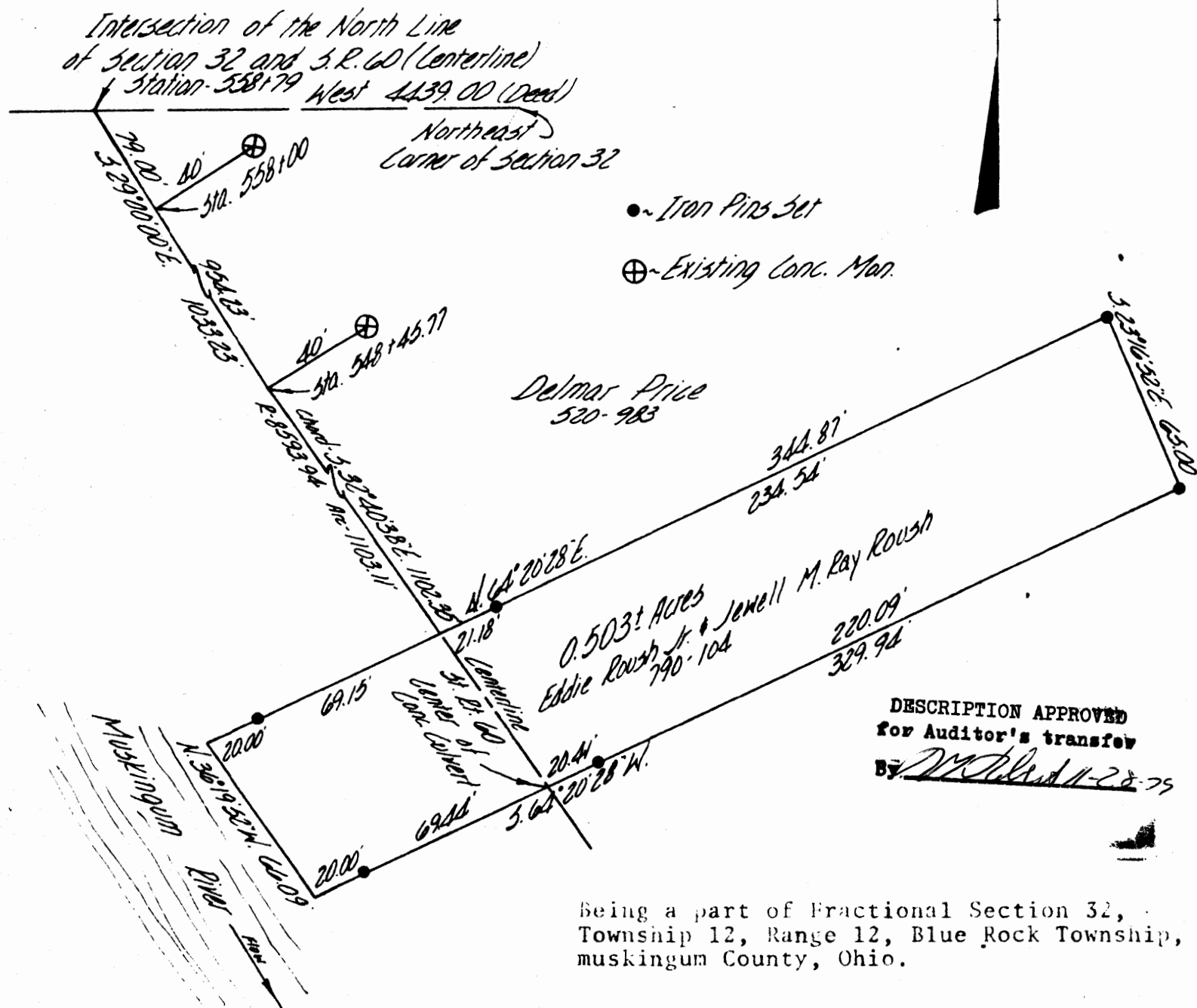
I hereby certify the above description to be correct as prepared by me, this 28th day of November 1979.

W.D. B. COPY
OFFICE COPY
NOT RECORDABLE
W. D. B. BUSH
REC. SER. #5713
E. Roush

DESCRIPTION APPROVED
for Auditor's transfer

By M. D. B. 11-28-79

665-11-79



OFFICE COPY
NOT RECORDABLE

I hereby certify the above plat and
survey to be correct as prepared by
this 28th day of November 1979.

W. J. BIEDENBACH
REG. SURVEYOR #5718

W. J. BIEDENBACH & ASSOC. Surveying & Mapping 3120 Lisa Ln. Zanesville, Ohio 43701 (614) 453-4850	
Drawn by: <u>MB</u>	Date: <u>11-27-79</u>
Scale: <u>1"=50'</u>	Checked by: <u>MB</u>
Job No: <u>645-H-79</u>	E. Pouch