

**CANNON LAND SURVEYING  
7945 TWP. RD. 114 NE  
NEW LEXINGTON, OHIO 43764**

Situated in the State of Ohio, County of Muskingum, Township of Brush Creek, T- 11, R- 13, being a part of Paula Peterman Vol. 2282 Pg. 418, being part of Section 14, and more particularly described as follows:

Beginning at an iron pin found at the Southwest Corner of Section 14; thence along the West Line of Section 14 North 02 Degrees 10 Minutes 10 Seconds East 837.18 feet to an iron pin found; thence South 86 Degrees 15 Minutes 55 Seconds East 2404.24 feet to a point in St. Rt. 555; thence North 19 Degrees 03 Minutes 56 Seconds West 532.41 feet to a point; thence along St. Rt. 555 North 19 Degrees 12 Minutes 40 Seconds West 401.35 feet to a point and the place of beginning; thence North 19 Degrees 12 Minutes 40 Seconds West 307.88 feet to a point; thence along St. Rt. 555 North 28 Degrees 57 Minutes 40 Seconds West 154.56 feet to a PK nail set; thence North 65 Degrees 56 Minutes 05 Seconds East 377.29 feet to a point in Brush Creek, passing an iron pin found at 328.98 feet; thence along the centerline of Brush Creek the next 8 courses to points: South 74 Degrees 25 Minutes 16 Seconds East 199.73 feet; thence South 52 Degrees 44 Minutes 56 Seconds East 59.06 feet; thence South 15 Degrees 08 Minutes 24 Seconds East 54.77 feet; thence South 29 Degrees 03 Minutes 45 Seconds West 64.52 feet; thence South 13 Degrees 41 Minutes 31 Seconds East 47.52 feet; thence South 71 Degrees 27 Minutes 33 Seconds East 216.01 feet; thence South 73 Degrees 18 Minutes 19 Seconds East 33.85 feet; thence South 52 Degrees 24 Minutes 07 Seconds East 33.65 feet; thence leaving said creek South 70 Degrees 28 Minutes 53 Seconds West 706.45 feet to the place of beginning, passing iron pins set at 61.86 feet and at 680.92 feet, containing 5.271 acre after the following 0.648 acre tract of Goss Realty Vol. 707 Pg. 117, more or less, subject to all legal highways and easements.

Excepting the following abandoned Railway of The Toledo & Ohio Central Railway ( Now Goss Realty Vol. 707 Pg. 117 )

Beginning at an iron pin found at the Southwest Corner of Section 14; thence along the West Line of Section 14 North 02 Degrees 10 Minutes 10 Seconds East 837.18 feet to an iron pin found; thence South 86 Degrees 15 Minutes 55 Seconds East 2404.24 feet to a point in St. Rt. 555; thence along St. Rt. 555 North 19 Degrees 03 Minutes 56 Seconds West 532.41 feet to a point; thence North 78 Degrees 54 Minutes 07 Seconds East 337.84 feet to a point; thence North 14 Degrees 28 Minutes 19 Seconds West 420.63 feet to a point; thence 31.96 feet on a curve to the right, having a 1877.78 foot radius, the chord bears North 14 Degrees 00 Minutes 01 Seconds West 31.96 feet to a point and the place of beginning; thence 263.54 feet on a curve to the right, having a 1877.78 foot radius, the chord bears North 09 Degrees 29 Minutes 29 Seconds West 263.32 feet to a point; thence North 05 Degrees 19 Minutes 47 Seconds West 161.92 feet to a point in the centerline of Brush Creek; thence along the centerline South 74 Degrees 25 Minutes 16 Seconds East 71.08 feet to a point; thence along said centerline South 52 Degrees 44 Minutes 56 Seconds East 4.89 feet to a point; thence leaving said creek South 05 Degrees 19 Minutes 47 Seconds East 133.07 feet to a point; thence 246.34 feet on a curve to the left, having a 1807.79 foot radius, the chord bears South 09 Degrees 22 Minutes 28 Seconds East 246.15 feet to a point; thence South 70 Degrees 28 Minutes 53 Seconds West 70.40 feet to the place of beginning, containing 0.648 acres, more or less, more or less, subject to all legal highways and easements.

See plat attached.

Part of parcel # 08-20-14-16-000

Subject to St. Rt. 555 R/W various width.

Iron pins set are 5/8 inch rebar 30 inches long, with plastic ID caps.

Bearings are based on the West Line of Section 14 as being North 02 Degrees 10 Minutes 10 Seconds East.

This description was written from a survey made by Kevin Cannon PS 7224, September 16, 2010.

OFFICE COPY  
NOT RECORDABLE  
KEVIN CANNON  
REG. NO.

9/16/10  
DATE

APPROVED  
MUSKINGUM COUNTY  
PLANNING COMMISSION DIRECTOR

5/23/11  
Date

Fee Paid



DESCRIPTION  
APPROVED  
By: [Signature] 5/23/11

# CANNON LAND SURVEYING

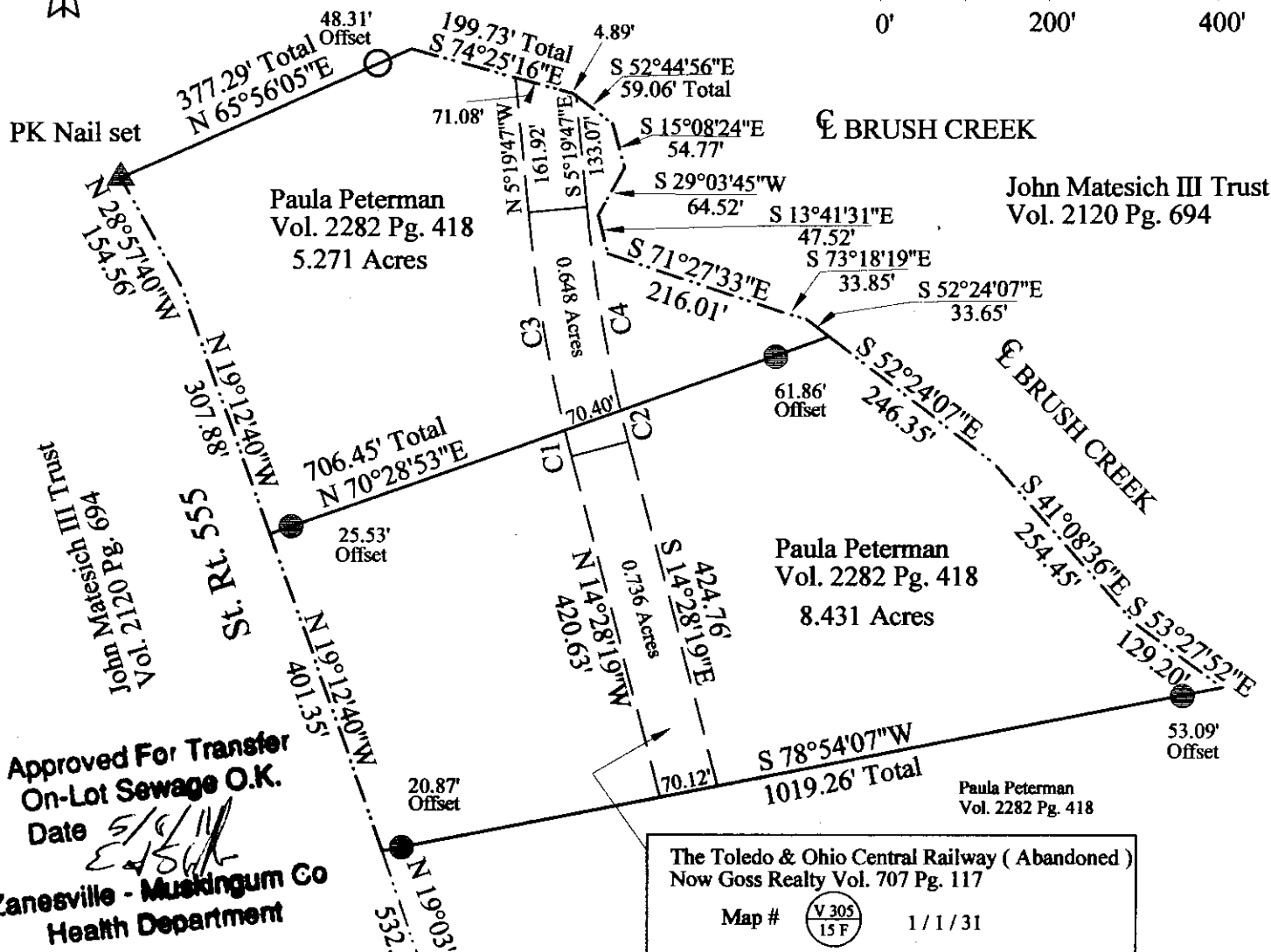
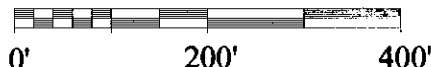
7945 TWP. RD. 114 NE  
New Lexington, Ohio 43764  
(740) 342-2835



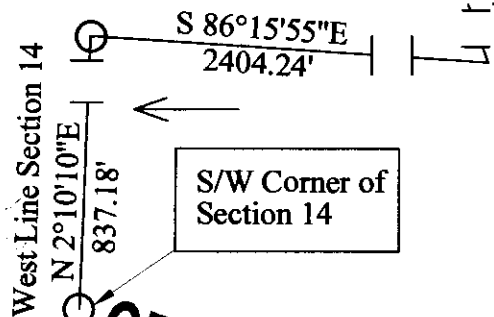
Bearings shown are to an assumed meridian and are used to denote angles only.  
Data references: USGS maps, tax maps, deed description and existing monumentation.  
This survey is subject to any facts that may be disclosed by a full and accurate title search.

John Matesich III Trust  
Vol. 2120 Pg. 694

Scale 1" = 200'



Approved For Transfer  
On-Lot Sewage O.K.  
Date 5/16/10  
Zanesville - Muskingum Co  
Health Department



Curve	Delta Angle	Radius	Arc	Chord	Chord Bearing
1	00°58'31"	1877.78	31.96	31.96	N 14°00'01"W
2	01°09'52"	1807.79	38.38	38.16	S 09°57'49"E
3	8°02'28"	1877.78	263.54	263.32	N 9°29'29" W
4	7°48'27"	1807.79	246.34	246.15	S 9°22'28"E



## LEGEND

- Iron Pin Set 5/8" Rebar With Plastic ID Cap, Stamped CLS 7224
- Iron Pin Found
- ▲ PK Nail Set
- △ Railroad Spike Found
- Stone Found
- ⊗ Post
- X-X- Fence
- Basis of Bearings

Kevin Cannon  
Reg. # 7224

Date

DESCRIPTION  
APPROVED

By: *[Signature]* 5/23/10

Survey for: Jim Peterman  
State: Ohio  
County: Muskingum  
Township: Brush Creek  
T - 11, R - 13, Lot: N/A  
Section: 14  
City or Village: N/A  
Subdivision: N/A  
Parcel #: Part of 08-20-14-16-000

APPROVED  
MUSKINGUM COUNTY  
PLANNING COMMISSION DIRECTOR

5/23/10  
Date

Fee Paid

OFFICE COPY  
NOT RECORDABLE