

Baseline Surveying, Inc.

Land Surveying and Construction Layout

3010 East Pike  
Zanesville, OH 43701

Email: bei@rroho.com

Telephone (740) 453-4850

- MINUTES 07 SECONDS), PASSING AN EXISTING CONCRETE MONUMENT AT AN ARC DISTANCE OF 62.57 FEET, A TOTAL ARC DISTANCE OF 108.14 FEET TO AN IRON PIN SET;
2. NORTH 12 DEGREES 07 MINUTES 30 SECONDS WEST, PASSING AN EXISTING IRON PIN (5/8 INCH REBAR WITH "DINAN" CAP) AT 293.00 FEET, A TOTAL DISTANCE OF 722.69 FEET TO THE PLACE OF BEGINNING.

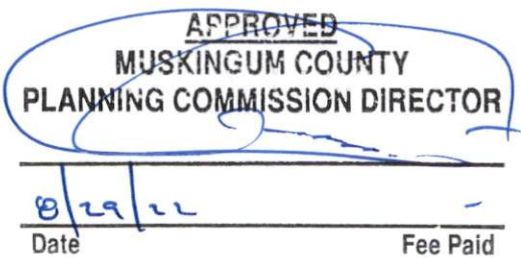
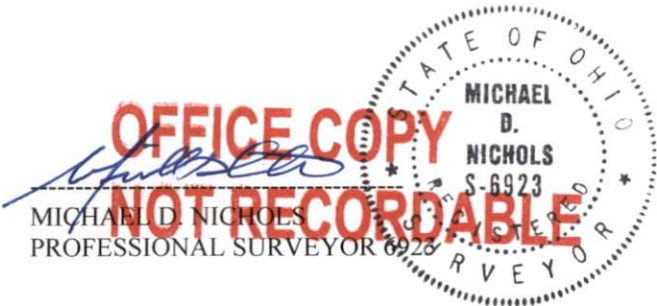
CONTAINING 1.150 ACRES. SUBJECT TO ALL LEGAL ROAD RIGHT OF WAYS OF STATE ROUTE 555 (CENTER ROAD), WENTWORTH DRIVE (COUNTY ROAD 555A AND COUNTY ROAD 555) AND ALL OTHER APPLICABLE EASEMENTS.

NOT TO BE USED AS A SEPARATE BUILDING SITE OR TRANSFERRED AS AN INDEPENDENT PARCEL IN THE FUTURE WITHOUT PLANNING COMMISSION APPROVAL IN ACCORDANCE WITH APPLICABLE SUBDIVISION REGULATIONS.

BEARINGS ARE BASED ON OHIO STATE PLANE COORDINATE SYSTEM 1983 (2011), OHIO SOUTH ZONE, GRID, DERIVED FROM A GPS OBSERVATION.

ALL IRON PINS SET ARE 5/8 INCH X 30 INCH REBAR WITH PLASTIC IDENTIFICATION CAPS (BASELINE PS6923/PS8536).

I, MICHAEL D. NICHOLS, PS 6923, HEREBY CERTIFY TO THE BEST OF MY KNOWLEDGE AND BELIEF THE SURVEY AND DESCRIPTION TO BE CORRECT AS PREPARED BY ME, THIS 15TH DAY OF AUGUST 2022, FROM A FIELD SURVEY COMPLETED BY ME ON THE 12TH DAY OF AUGUST 2022.



DESCRIPTION

APPROVED

By: DM Lyke