

Phone and Fax: 740-453-8448

## L. Peter Dinan & Associates

27 South Sixth Street

P.O. Box 55, Zanesville, Ohio 43702-0055

SURVEYING & MAPPING

John C. Matesich Jr., Trustee  
All of Parcel #08-20-14-31-000  
103.50 Acres  
Includes 0.58 Acres of old railroad

Situated in the State of Ohio, County of Muskingum, Township of Brush Creek.

Being a part of the south half of Section 14, Township 11, Range 13 bounded and described as follows:

Beginning at an iron pin found at the northwest corner of the southeast quarter of Section 14; thence south 84 degrees 01 minutes 02 seconds east 2519.77 feet to a point in a strip mine pond; thence south 5 degrees 41 minutes 50 seconds west 1921.65 feet to an iron pin found; thence north 83 degrees 23 minutes 12 seconds west 1560.34 feet to a point in Brush Creek; thence following said Brush Creek the following fourteen (14) courses and distances, north 34 degree 04 minutes 34 seconds west 395.52 feet to a point; thence north 8 degrees 45 minutes 15 seconds east 109.97 feet to a point; thence north 16 degrees 05 minutes 41 seconds west 106.39 feet to a point; thence north 13 degrees 39 minutes 28 seconds west 83.69 feet to a point; thence north 21 degrees 43 minutes 27 seconds west 102.34 feet to a point; thence north 33 degrees 32 minutes 27 seconds west 160.61 feet to a point; thence north 45 degrees 30 minutes 38 seconds west 170.36 feet to a point; thence north 41 degrees 38 minutes 45 seconds west 122.20 feet to a point; thence north 46 degrees 41 minutes 07 seconds west 158.75 feet to a point; thence north 55 degrees 34 minutes 37 seconds west 163.49 feet to a point; thence north 57 degrees 35 minutes 53 seconds west 267.81 feet to a point; thence north 21 degrees 33 minutes 55 seconds east 69.24 feet to a point; thence north 33 degrees 46 minutes 58 seconds west 67.41 feet to a point; thence north 69 degrees 34 minutes 11 seconds west 209.38 feet to a point; thence leaving said creek south 68 degrees 23 minutes 45 seconds west 365.88 feet to a point in the center of old State Route #555; thence along the center of old State Route #555 north 26 degrees 30 minutes west 100.48 feet to a point; thence continuing along the center of old State Route #555 north 7 degrees 18 minutes 15 seconds east 144.81 feet to a point; thence leaving said centerline south 83 degrees 15 minutes 50 seconds east 149.29 feet to a point in Brush Creek; thence down Brush Creek the following six (6) courses and distances, north 36 degrees 45 minutes 05 seconds west 121.87 feet to a point; thence north 3 degrees 13 minutes 55 seconds east 67.79 feet to a point; thence north 52 degrees 41 minutes 49 seconds east 135.51 feet to a point; thence north 86 degrees 00 minutes 43 seconds east 136.23 feet to a point; thence south 88 degrees 07 minutes 44 seconds east 97.46 feet to a point; thence north 82 degrees 07 minutes 02 seconds east 453.51 feet to the place of beginning, containing one hundred and three and fifty hundredths (103.50) acres more or less.

Subject to the easements of State Route #555

This description written from a survey made by  
Dinan, Registered Surveyor #5451, February 6,

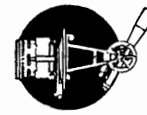
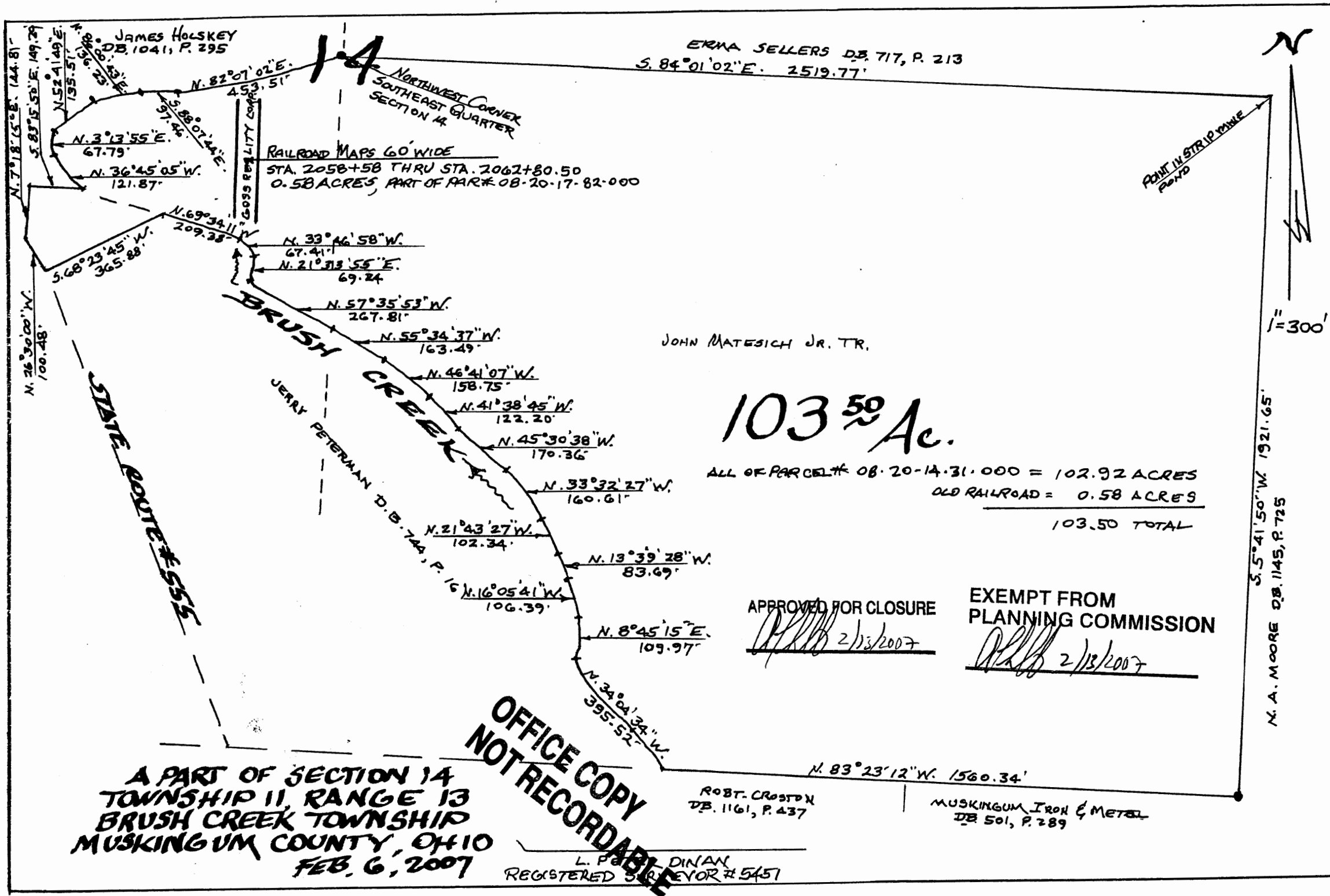
APPROVED FOR CLOSURE

*[Signature]* 2/13/2007

EXEMPT FROM  
PLANNING COMMISSION

*[Signature]* 2/13/2007

OFFICE COPY  
NOT RECORDABLE



L. PETER DINAN & ASSOCIATES  
27 SOUTH SIXTH STREET  
ZANESVILLE, OHIO