

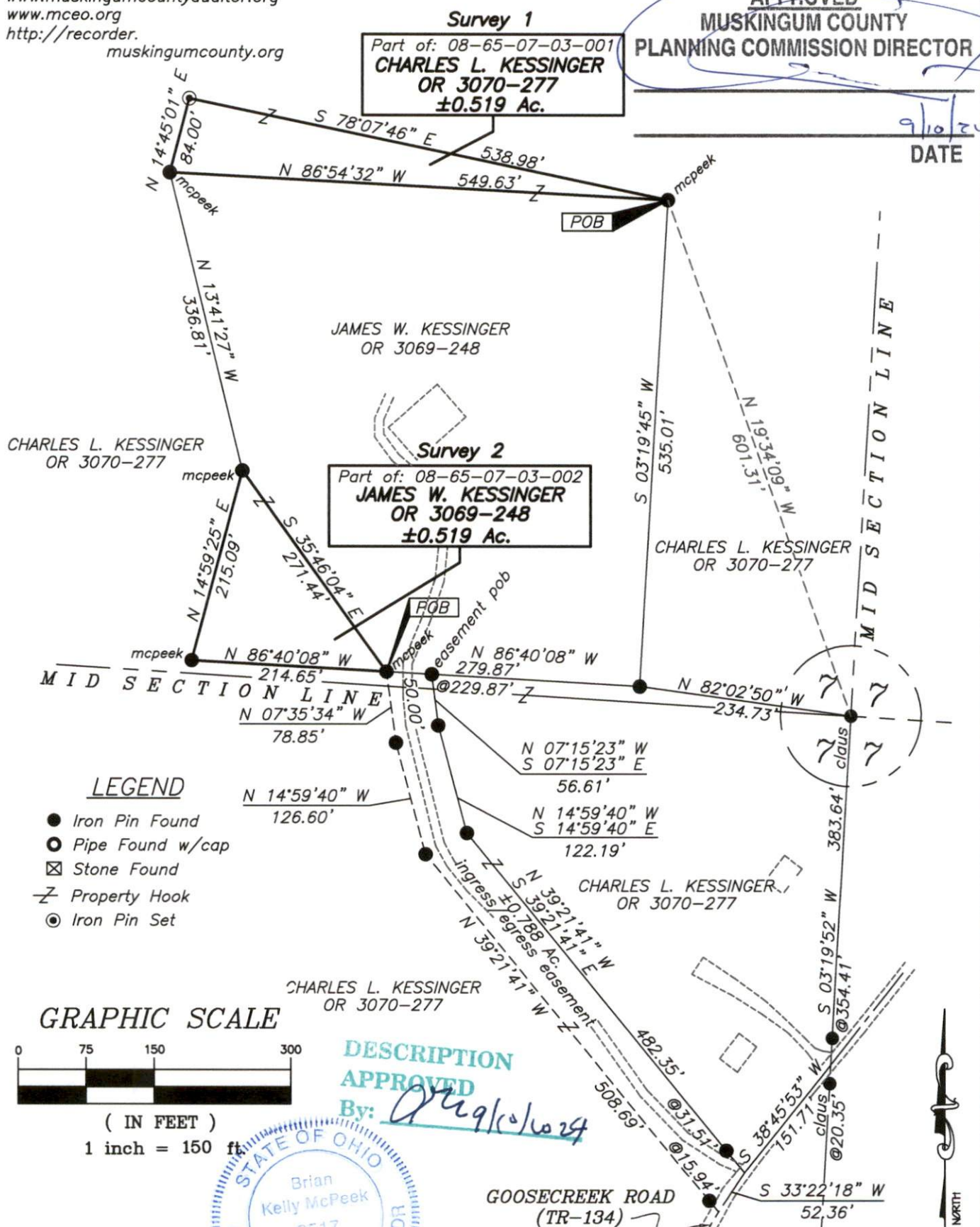
*The State of Ohio, County of Muskingum
Township of Brush Creek, and being a part of the
West Half of Sec. 7, T10, R13.*

APPROVED
MUSKINGUM COUNTY
PLANNING COMMISSION DIRECTOR

Bearings are based on State Plane Grid Coordinates, NAD83, Ohio South, per GPS Observation.

Not to be used as a separate building site or transferred as an independent parcel in the future without planning commission approval in accordance with applicable subdivision regulations.

* As Noted on Plat
www.muskingumcountyauditor.org
www.mceo.org
http://recorder.
muskingumcounty.org



OFFICE COPY
NOT RECORDABLE

Brian Kelly McPeck
Reg. Surveyor No. 8517

This plat was prepared by McPeck Land Surveying, LLC in accordance with Chapter 4733-37 of the Administrative Code, and is intended to be used for the legal transfer of the property described and does not intend to describe all or any easements of record, nor encroachments unless otherwise intended.



MCPEEK LAND SURVEYING

www.mcpeeklandsurveying.com
email: brian@mcpeeklandsurveying.com
1705 East Pike, * Zanesville, Oh 43701 * 740.704.6073