

Tract 2

Commencing at the Northwest corner of the Northeast Quarter of Section 5; Thence, S.01°30'00"W. a record distance of 825.00 feet along the West line Said Northeast Quarter to a point on the Northwest corner of the lands of D. Ross; Thence, S.88°46'00"E. a record distance of 694.91 feet along the North line of said Ross lands to a point in the center of S.R. 555; Thence, S.88°46'00"E. a distance of 1,211.53 feet along the South line of Ohio Power lands to a point, BEING THE POINT OF BEGINNING, passing a found iron pin at 29.71 and a set rebar at 755.45';

Thence, **S.88°46'00"E.** a distance of **683.35** feet along the South line of the lands of Ohio Power (576/058) to a found iron pin on the East line of Section 5;

Thence, **S.01°12'19"W.** a distance of **1,178.59** feet along the East line of said section to a found concrete monument on the North East corner of the lands of Ohio Power (279/200);

Thence, **N.88°47'12"W.** a distance of **1,388.60** feet along said Ohio Power lands to a point on the Southeast corner of the lands of Ohio Power (282/287);

Thence, on a curve to the Right an arc distance of 423.00 feet, with a Radius of 717.87 feet, whose chord bears **N.02°51'06"W.** a distance of **416.91** feet along said Ohio Power lands to a point;

Thence, on a curve to the Right an arc distance of 1,113.01 feet, with a Radius of 1,025.23 feet, whose chord bears **N.45°07'48"E.** a distance of **1,059.15** feet along said Ohio Power lands to the point of beginning.

The above described parcel contains 34.42 acres, more or less and is subject to all legal easements and right of ways.

The combined total acreage for tracts 1 and 2 total 42.81 acres, more or less and is subject to all legal easements and right of ways. All set rebars are 5/8" x 30" rebars with plastic I.D. caps. North is based upon an assumed meridian.

Description was prepared from an actual field survey by Bowman Surveying, Stephen M. Bowman, P.S.#7135. May 21, 2007.

APPROVED FOR CLOSURE

[Signature] 5/29/2007

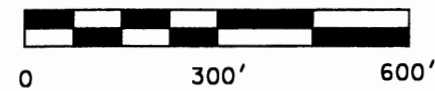
EXEMPT FROM
PLANNING COMMISSION

[Signature] 5/29/2007

**OFFICE COPY
NOT RECORDABLE**

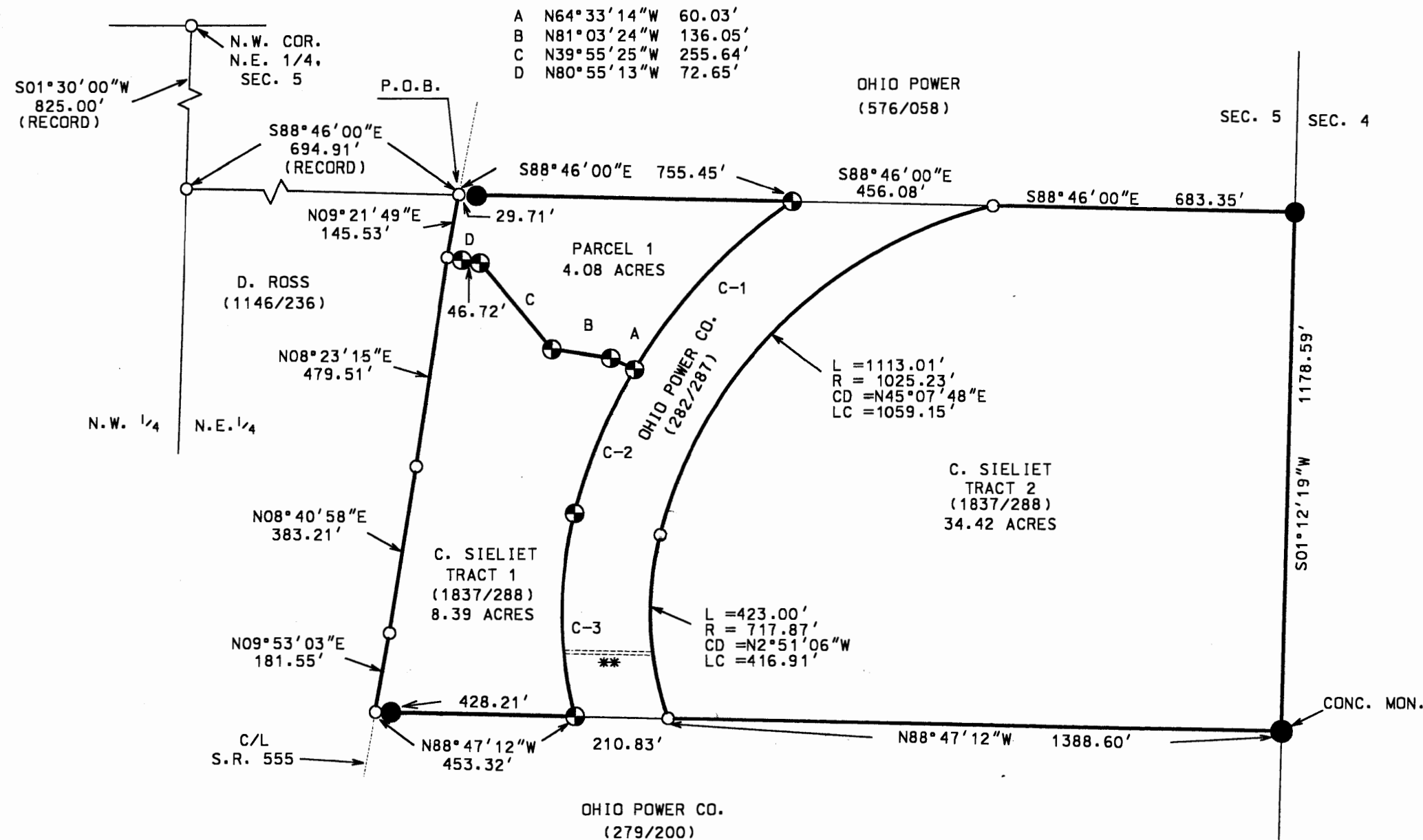
NORTH IS BASED UPON
AN ASSUMED MERIDIAN

SCALE 1" = 300'



SURVEY PLAT FOR CAROL SIELIET
SITUATED IN THE NORTHEAST QUARER OF SECTION 5, T-10, R-13, BRUSH CREEK
TOWNSHIP, MUSKINGUM COUNTY, OHIO.

AUDITORS PARCEL
08-70-05-44-000



PERTINENT DOCUMENTS
DEEDS AS SHOWN.

LEGEND

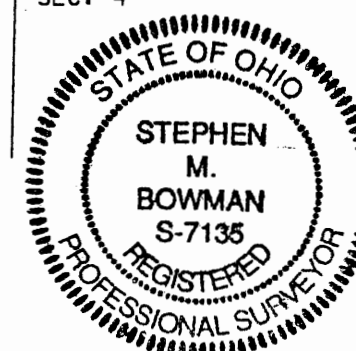
- IRON PIN FOUND
- ⊕ 5/8" X 30" REBAR SET W/ I.D. CAP
- POINT
- ⊞ STONE FOUND
- CENTERLINE

I CERTIFY THIS DRAWING WAS PREPARED
FROM AN ACTUAL FIELD SURVEY I CONDUCTED

**OFFICE COPY
NOT RECORDABLE**

C-1	C-2	C-3
L = 525.03'	L = 354.47'	L = 465.40'
R = 1225.23'	R = 1225.23'	R = 917.87'
CD = S42°52'54"W	CD = S22°19'03"W	CD = S0°29'48"E
LC = 521.02'	LC = 353.24'	LC = 460.43'

**
8' WIDE PRIVATE
ROAD EASEMENT
(282/356)



BOWMAN SURVEYING
38 N. 4TH STREET, RM. 103
ZANESVILLE, OHIO 43701
PHONE/FAX 740-454-0496
JOB: M-07096 DATE: 05/21/07