

ALAN DONAKER SURVEYING

Alan Donaker, P.S.

19849 TR 383

Walhonding, OH 43843

Fax: (740) 327-1083

Phone: (740) 327-7001

Being 25.587 acres, more or less, in Section 3, in the Second Quarter of Township 3 North, Range 8 West, United States Military Lands, in Township of Cass, in the County of Muskingum, in the State of Ohio, conveyed to Kenneth W. Jr. Moore, DR 719-37 (part, 1st and 2nd parcels) and Kenneth Moore, Jr., DR 1032-567 (part), Parcel No. 10-04-03-02-000 (part 2.246 acres), Parcel No. 10-04-03-03-000 (part, 16.317 acres) and Parcel No. 10-04-03-04-000 (part, 7.024 acres) and more particularly described as follows:

Commencing at a ½" rebar found at the Northwest corner of the South ½ of Section 3, said rebar being the TRUE POINT OF BEGINNING:

thence, with the property line of Charles H. and Jill Baumgardner Fry, DR 858-340, the following 2 courses:

1. thence, N. 04° 06' 52" W. a distance of 700.04' to a ⅝" rebar set;
2. thence, N. 04° 06' 52" W. a distance of 30.00' to a point in the centerline of Cass Irish Ridge Road;

thence, with the centerline of Cass Irish Ridge Road, the following 19 courses:

1. thence, S. 53° 58' 49" E. a distance of 201.01' to a point;
2. thence, S. 56° 26' 15" E. a distance of 76.42' to a point;
3. thence, S. 58° 33' 39" E. a distance of 33.60' to a point;
4. thence, S. 58° 33' 39" E. a distance of 33.61' to a point;
5. thence, S. 58° 33' 39" E. a distance of 34.67' to a point;
6. thence, with a curve to the left, the curve data for which is: D = 56° 52' 11", R = 342.27', L = 339.73', Ch. B. S. 86° 59' 44" E., Ch. L. 325.95' to a point;
7. thence, N. 64° 34' 10" E. a distance of 195.60' to a point;
8. thence, with a curve to the right, the curve data for which is: D = 18° 36' 31", R = 565.09', L = 183.53', Ch. B. N. 73° 52' 26" E., Ch. L. 182.72' to a point;
9. thence, N. 83° 10' 41" E. a distance of 358.89' to a point;
10. thence, N. 86° 05' 38" E. a distance of 58.19' to a point;
11. thence, S. 89° 02' 26" E. a distance of 36.94' to a point;
12. thence, S. 81° 05' 41" E. a distance of 29.92' to a point;
13. thence, with a curve to the right, the curve data for which is: D = 90° 40' 02", R = 88.17', L = 139.52', Ch. B. S. 35° 45' 40" E., Ch. L. 125.41' to a point;
14. thence, S. 09° 34' 22" W. a distance of 46.24' to a point;
15. thence, S. 14° 04' 55" W. a distance of 192.98' to a point;
16. thence, with a curve to the left, the curve data for which is: D = 39° 15' 20", R = 255.17', L = 174.82', Ch. B. S. 05° 32' 45" E., Ch. L. 171.43' to a point;
17. thence, S. 25° 10' 25" E. a distance of 35.30' to a point;
18. thence, S. 46° 01' 21" E. a distance of 10.88' to a point;
19. thence, with a curve to the left, the curve data for which is: D = 12° 25' 39", R = 145.88', L = 31.64', Ch. B. S. 52° 14' 10" E., Ch. L. 31.58' to a point;

thence, through the property of Kenneth Moore Jr., DR 1032-567, the following 2 courses:

1. thence, S. 04° 35' 06" E. a distance of 39.96' to a ⅝" rebar set;
2. thence, S. 04° 35' 06" E. a distance of 603.19' to a ⅝" rebar set;

thence, with the North line of the Limited Access line of State Road 16 (Musk-16-7.16), the following 3 courses:

1. thence, S. 71° 46' 29" W. a distance of 19.48' to a 5/8" rebar set;
2. thence, N. 84° 04' 44" W. a distance of 350.85' to a 5/8" rebar set;
3. thence, S. 73° 23' 44" W. a distance of 145.80' to a point (3/4" pipe found S. 73° 23' 44" W. a distance of 0.53');

thence, with the property line of Jack J. and Kendra J. Hindel, DR 1137-423, the following 3 courses:

1. thence, N. 04° 34' 56" W. a distance of 579.92' to a 5/8" rebar found;
2. thence, N. 04° 34' 56" W. a distance of 30.00' to a 5/8" rebar set;
3. thence, S. 86° 16' 50" W. a distance of 375.00' to a 5/8" rebar found;

thence, with the property line of Kenneth Moore Jr., DR 1032-567, S. 86° 16' 50" W. a distance of 625.00' to the TRUE POINT OF BEGINNING, containing 25.587 acres, more or less, including public road right-of-way and is subject to all easements, rights-of-way, or restrictions, whether recorded or implied.

Bearings are based on DR 1137-423 and are for angular calculations only.

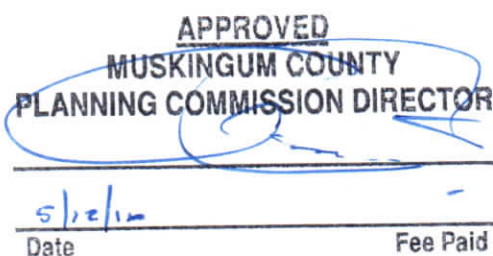
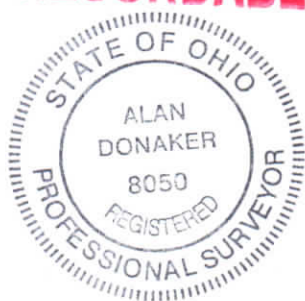
All 5/8" rebars set are 30" long with plastic cap marked "AMD 8050".

Pertinent Documents: Tax Map and all Deeds and Plats shown, Mus-16-7.16

Surveys by: Earl R. Donaker, W.J. Biedenbach, Malcolm A. Grove, Alan Donaker

Description and plat by Alan Donaker, Professional Surveyor, #8050, from a survey of the premises on May 21, in the year of our Lord Two Thousand Thirteen.

Alan Donaker 5/21/13
**OFFICE COPY
NOT RECORDABLE**



**DESCRIPTION
APPROVED**
By: *[Signature]* 5/18/2016

ALAN DONAKER SURVEYING

Alan Donaker, P.S.

19849 TR 383

Walhonding, OH 43843

Fax: (740) 327-1083

Phone: (740) 327-7001



60' Non-Exclusive Easement

Granting and Reserving a 60' Non-Exclusive Easement for ingress and egress and regress, 30.00' both sides of the following described centerline said easement is to be maintained by the Grantee, their heirs and assigns;

Being in Section 3, in the Second Quarter of Township 3 North, Range 8 West, United States Military Lands, in Township of Cass, in the County of Muskingum, in the State of Ohio, conveyed to Kenneth Moore, Jr., DR 1032-567 and more particularly described as follows:

Commencing at a ½" rebar found at the Northwest corner of the South ½ of Section 3;

thence, with the property line of Charles H. and Jill Baumgardner Fry, DR 858-340, the following 2 courses:

1. thence, N. 04° 06' 52" W. a distance of 700.04' to a ⅝" rebar set;
2. thence, N. 04° 06' 52" W. a distance of 30.00' to a point in the centerline of Cass Irish Ridge Road;

thence, with the centerline of Cass Irish Ridge Road, the following 3 courses:

1. thence, S. 53° 58' 49" E. a distance of 201.01' to a point;
2. thence, S. 56° 26' 15" E. a distance of 76.42' to a point;
3. thence, S. 58° 33' 39" E. a distance of 33.60' to a point;

thence, with the centerline of an existing 60' easement, DR 1137-423, and through the property of Kenneth W. Moore, Jr., DR 719-37, the following 3 courses:

1. thence, S. 04° 39' 50" W. a distance of 43.65' to a point;
2. thence, S. 31° 13' 19" E. a distance of 136.23' to a point;
3. thence, S. 42° 59' 25" E. a distance of 177.61' to a point;

thence, through the property of Kenneth W. Moore, Jr., DR 719-37 and Kenneth Moore, Jr., DR 1032-567, S. 32° 29' 18" E. a distance of 292.52' to a ⅝" rebar set;

thence, through the property of Kenneth Moore, Jr., DR 1032-567, S. 49° 50' 35" E. a distance of 11.47' to a point, said point being the TRUE POINT OF BEGINNING:

thence, through the property of Kenneth Moore Jr., DR 1032-567, S. 49° 50' 35" E. a distance of 97.99' to a ⅝" rebar set on the property line of Jack L. and Kendra J. Hindel and the TRUE POINT OF ENDING.

Bearings are based on DR 1137-423 and are for angular calculations only.

All 5/8" rebars set are 30" long with plastic cap marked "AMD 8050".

Pertinent Documents: Tax Map and all Deeds and Plats shown, Mus-16-7.16

Surveys by: Earl R. Donaker, W.J. Biedenbach, Malcolm A. Grove, Alan Donaker

Description and plat by Alan Donaker, Professional Surveyor, #8050, from a survey of the premises on May 21, in the year of our Lord Two Thousand Thirteen.

This property is subject to all easements, rights-of-way or restrictions, whether recorded or implied.

ALAN DONAKER SURVEYING
19849 TR 383
Walhonding, OH 43843
Telephone: (740) 327-7001
Fax: (740) 327-1083

Pertinent Documents: Tax Map
All Deeds and Plats Shown
Mus-16-7.16

Surveys by: Earl R. Donaker,
W. J. Biedenbach, Malcolm A.
Grove, Alan Donaker

Bearings are based on
OR 1137-423 and are for
angular calculations only

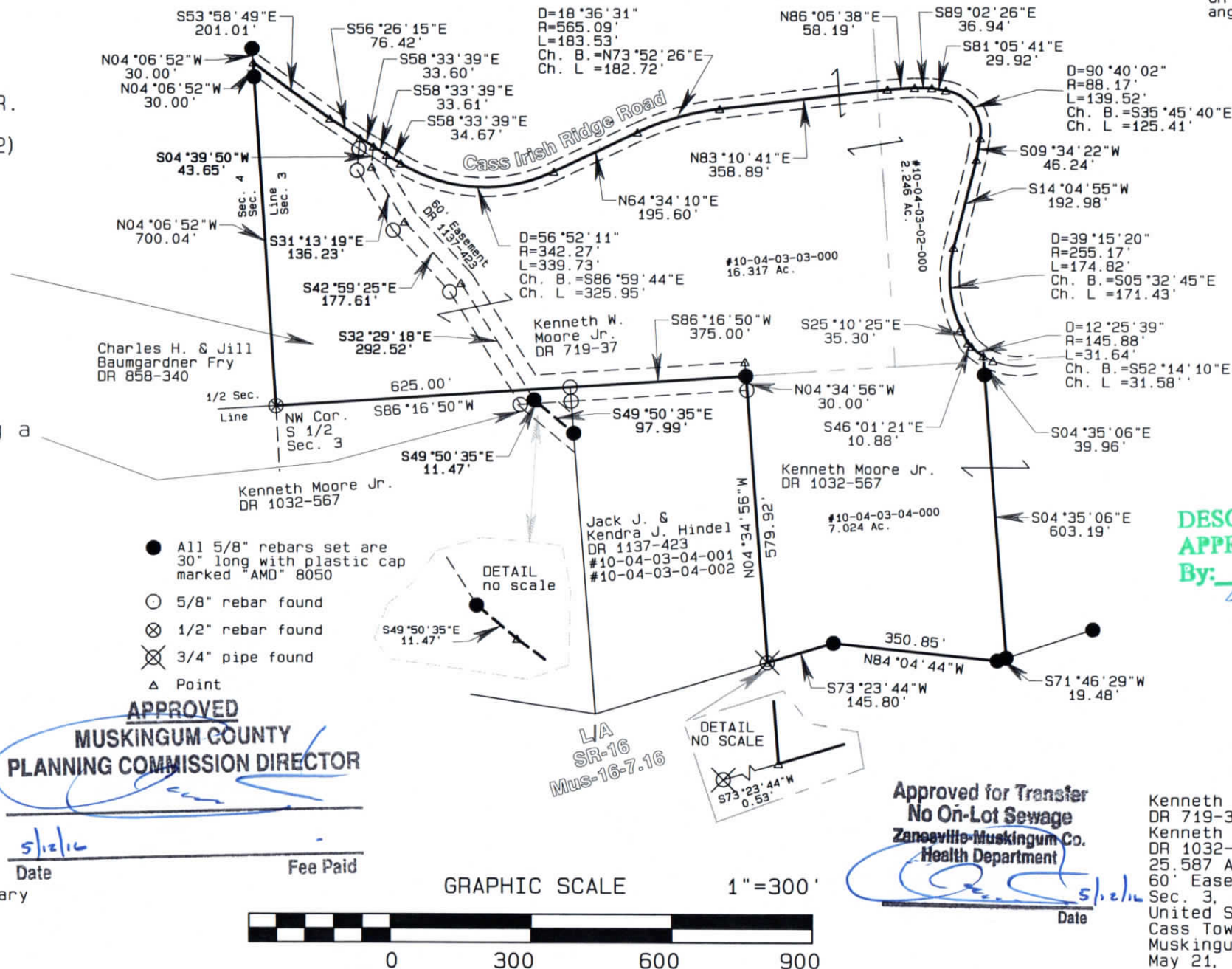
Kenneth W. Moore, JR.
DR 719-37
(part, parcels 1 & 2)
Kenneth Moore, Jr.
DR 1032-567 (part)
#10-04-03-02-000
(part, 2.246 Ac.)
#10-04-03-03-000
(part, 16.317 Ac.)
#10-04-03-04-000
(part, 7.024 Ac.)

25.587 Ac.+/- TOTAL

Granting & Reserving a
60' NON-EXCLUSIVE
EASEMENT



**OFFICE COPY
NOT RECORDABLE**



**DESCRIPTION
APPROVED**
By: *[Signature]* 5/10/16

**APPROVED
MUSKINGUM COUNTY
PLANNING COMMISSION DIRECTOR**

**Approved for Transfer
No On-Lot Sewage
Zanesville-Muskingum Co.
Health Department**

Kenneth W. Moore, JR.
DR 719-37
Kenneth Moore, Jr.
DR 1032-567
25.587 Ac.+/- &
60' Easement
Sec. 3, Second Qtr., T3N, R8W
United States Military Lands
Muskingum County, Ohio
May 21, 2013

