



Linn Engineering, Inc.

Civil Engineering Consultants

740-452-7434 • 1-800-991-7434

534 Market Street • P.O. Box 2086 • Zanesville, Ohio 43702-2086

**THE LONGABERGER COMPANY
OFFICIAL RECORD 2423, PAGE 911
+/- 5.981 ACRES**

Situated in the State of Ohio, County of Muskingum, Township of Cass, bounded and described as follows:

Being a part of Section 6, Township 3, Range 8, Cass Township, United States Military Lands, being part of lands now owned by The Longaberger Company as the same is described in Muskingum County Official Record 2423, Page 911, and being more particularly described as follows:

Beginning for reference at an iron pin found at the center of Section 6, Township 3, Range 8, United States Military Lands;

thence North 00 degrees 31 minutes 25 seconds East 154.07 feet to the principal of beginning;

thence through the lands of said Longaberger the following fourteen courses:

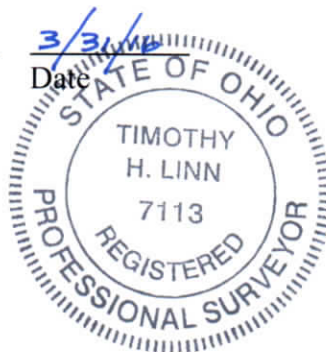
- 1) North 26 degrees 00 minutes 45 seconds East 113.91 feet to an iron pin set;
- 2) North 26 degrees 00 minutes 45 seconds East 53.00 feet the water's edge of pond;
- 3) North 80 degrees 32 minutes 03 seconds East 27.66 feet the water's edge of pond;
- 4) North 40 degrees 58 minutes 06 seconds East 59.60 feet to the water's edge of pond;
- 5) North 51 degrees 15 minutes 13 seconds East 18.04 feet to the water's edge of pond;
- 6) North 72 degrees 21 minutes 04 seconds East 72.82 feet to the water's edge of pond;
- 7) South 84 degrees 07 minutes 49 seconds East 112.11 feet to the water's edge of pond;
- 8) North 88 degrees 50 minutes 33 seconds East 81.31 feet to the water's edge of pond;
- 9) North 69 degrees 21 minutes 32 seconds East 41.37 feet the water's edge of pond;
- 10) South 63 degrees 13 minutes 33 seconds East 205.40 feet to an iron pin set on the west line of Loop Road (a private road), passing an iron pin set at 8.56 feet;
- 11) South 26 degrees 48 minutes 22 seconds West 568.71 feet along said west line to a railroad spike set;
- 12) North 64 degrees 07 minutes 49 seconds West 371.10 feet, passing an iron pin set at 299.31 feet;
- 13) thence with a curve to the left having a radius of 315.54 feet, an arc length of 134.80 feet, a chord bearing of North 76 degrees 22 minutes 08 seconds West, and a chord length of 133.78 feet to an iron pin set;
- 14) North 26 degrees 00 minutes 45 seconds East 188.04 feet to the principal place of beginning, containing 5.981 acres, more or less, subject to all legal road right of ways and applicable easements, written or implied.

Iron pins set are 5/8 inch diameter by 30 inch long rebar with plastic identification caps.

Bearings are based on Ohio State Plane Coordinate System, South Zone, NAD 83 as per GPS observations made July 6, 2015.

This description is written based on a survey completed March 29, 2016 by Timothy H. Linn, Reg. No. 7113.

~~OFFICE COPY~~
~~NOT RECORDABLE~~
Timothy H. Linn, PS
Reg. No. 7113



Parcel No.
Part of: 10-04-06-01-000 (5.981 ac.)

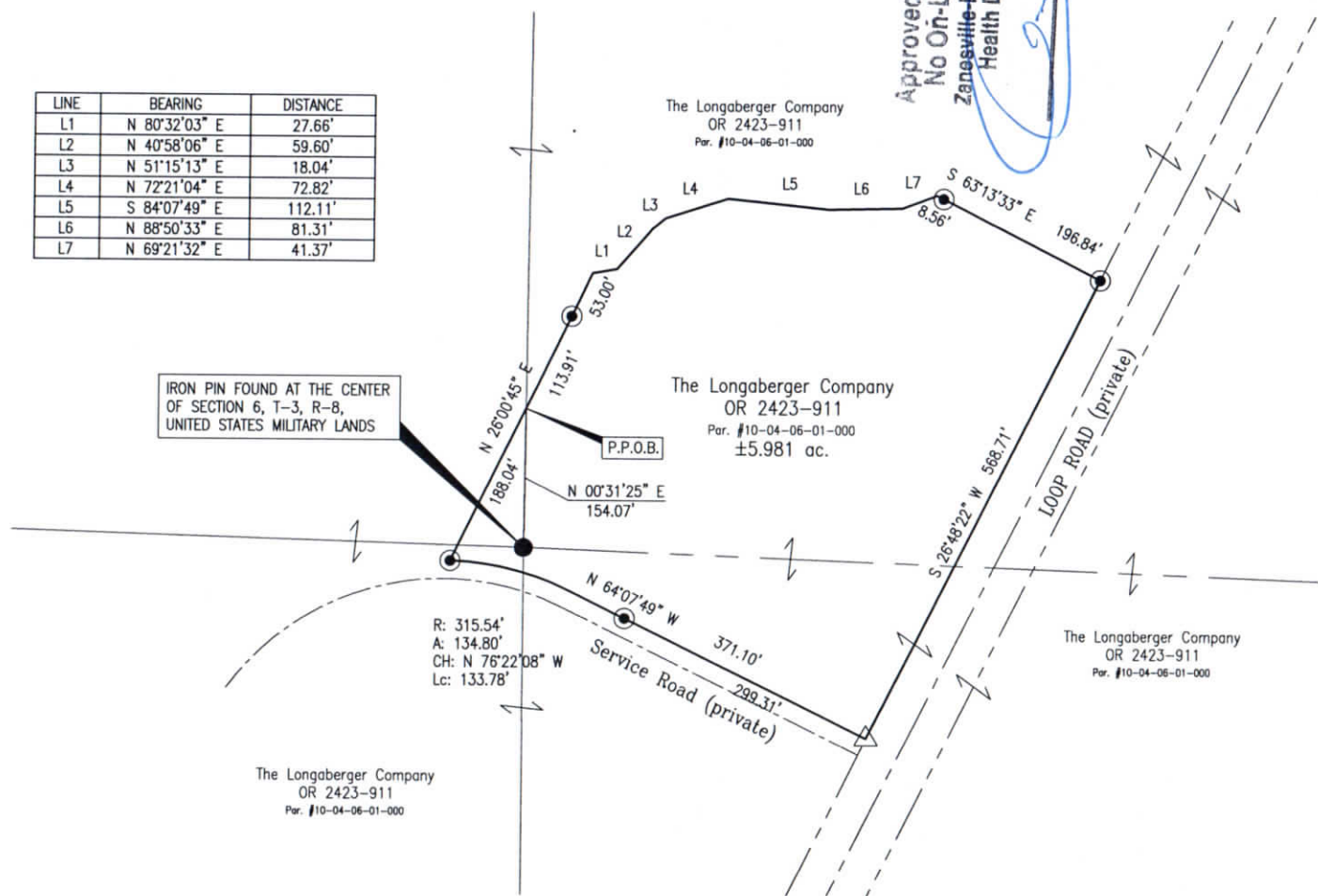
APPROVED
MUSKINGUM COUNTY
PLANNING COMMISSION DIRECTOR

4/14/16
Date

Fee Paid

DESCRIPTION
APPROVED
By: [Signature] 4/11/2016

LINE	BEARING	DISTANCE
L1	N 80°32'03" E	27.66'
L2	N 40°58'06" E	59.60'
L3	N 51°15'13" E	18.04'
L4	N 72°21'04" E	72.82'
L5	S 84°07'49" E	112.11'
L6	N 88°50'33" E	81.31'
L7	N 69°21'32" E	41.37'



SITUATED IN

SECTION 6, T-3, R-8, UNITED STATES MILITARY LANDS, CASS TOWNSHIP, MUSKINGUM COUNTY, OHIO.

BASIS OF BEARING

BEARINGS ARE BASED ON OHIO STATE PLANE COORDINATE SYSTEM, SOUTH ZONE, NAD83, GRID NORTH, AS PER OBSERVATIONS MADE ON 7/6/15.

PARCEL NO.

Part of: 10-04-06-01-000 (±5.981 ac.)

REFERENCES

OR 2423-911

LEGEND

- IRON PIN SET, 5/8" REBAR
- IRON PIN FOUND
- △ RAILROAD SPIKE SET
- Z — PROPERTY HOOK
- P.P.O.B. PRINCIPAL PLACE OF BEGINNING

DESCRIPTION
APPROVED
By: [Signature] 4/9/16



OFFICE COPY NOT RECORDABLE
Timothy H. Linn, P.S.
Reg. Surveyor No. 7113
Date: 3/31/16

Project No.: LONG-595 Handle Bldg 2016

Linn Engineering, Inc. 740-452-7434
Civil Engineering Consultants
P.O. Box 2086 Zanesville, Ohio 43702-2086

Fee Paid
Date: 4/14/16