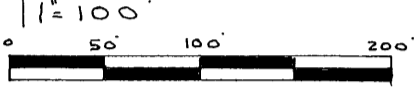


10-24-41-39-007
10126 FRAZERSBURG RD



BASE OF BEARINGS IS
TRUE NORTH BY AN
OBSERVATION OF THE SUN

- 3/4" IRON PIPE FOUND
- ⊕ 5/8" IP SET BY PREVIOUS SURVEY #5792
- 3/8" X 30" REBAR SET CAPPED GRAVES #5792



REFERENCE LIST

- VOL. 1655, Pg. 609
- VOL. 1597, Pg. 532
- VOL. 1160, Pg. 743
- VOL. 1628, Pg. 547

SURVEY OF LOTS ON NORTH
BY R.M. GRAVES #5792 12-18-97

SURVEY OF SOUTH PROP. LINE
BY R.M. GRAVES #5792 7-11-87

JEFFERSON TWP TAX MAP
#32-30

USGS DRESDEN QUAD.

Lot Split
Approved

By *RMB*

LOT 12
4TH. QTR.

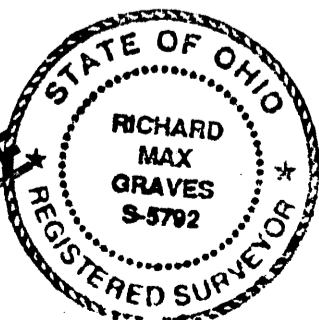
RANDY & KATRINA
CUNNINGHAM
10-34-41-39-000
VOL. 1655, Pg. 609

MAP SHOWING SURVEY OF A
3.289 ACRE PARCEL FOR RANDY &
KATRINA CUNNINGHAM, PART OF
VOL. 1655, Pg. 609 IN LOT 12, QTR.
TWP. 4, TWP. 3, RANGE 8 OF THE
UNITED STATES MILITARY LANDS
CASS TWP. MUSKINGUM CO., OHIO

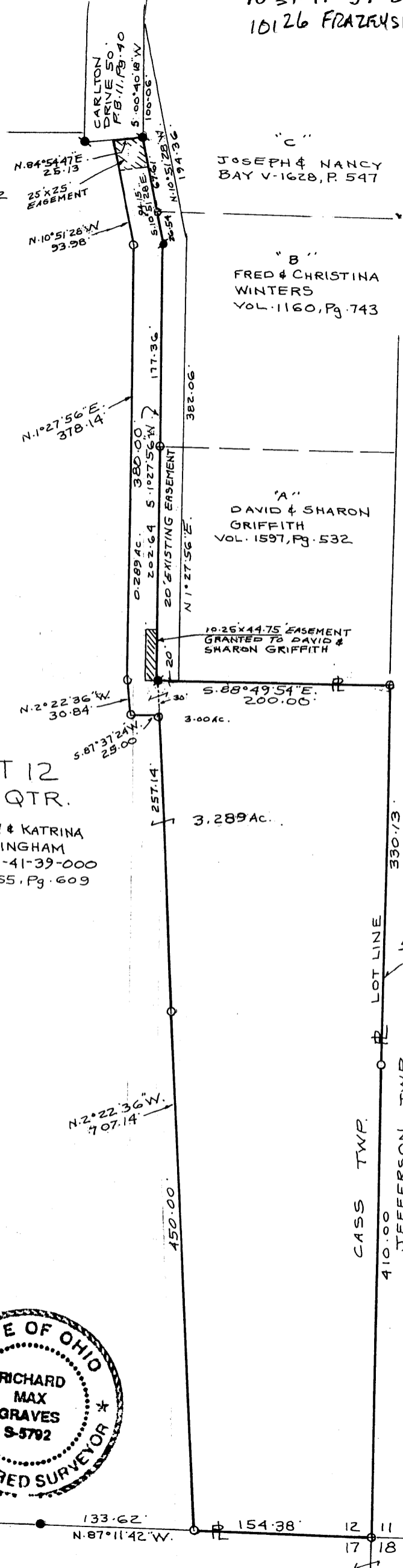
DESCRIPTION APPROVED
FOR AUDITOR'S TRANSFER
BY *RMB*

9-9-2007

RICHARD MAX GRAVES
REGISTERED SURVEYOR #5792
2925 KENLO WOODS
NASHPORT, OHIO 43130
AUG 2007
Richard Max Graves



**OFFICE COPY
NOT RECORDABLE**



"C"
JOSEPH & NANCY
BAY V-1628, P. 547

"B"
FRED & CHRISTINA
WINTERS
VOL. 1160, Pg. 743

"A"
DAVID & SHARON
GRIFFITH
VOL. 1597, Pg. 532

DONALD &
JUDY
MARTIN
VOL. 1150, P. 908
7.437 Ac.

KENNETH
MARTIN ETAL
1149, Pg. 232

N. 2° 22' 36" W.
407.14'

N. 2° 22' 36" W.
30.84'

N. 1° 27' 56" E.
378.14'

N. 84° 54' 47" E.
26.13'

N. 10° 51' 26" W.
93.98'

CARLTON
DRIVE 50'
PB. 11.18.40

S. 10° 51' 26" W.
100.06'

S. 10° 51' 26" W.
194.36'

S. 10° 27' 56" W.
177.36'

S. 10° 27' 56" W.
380.00'

S. 10° 27' 56" W.
202.64'

S. 88° 49' 54" E.
200.00'

S. 87° 37' 24" W.
29.00'

S. 87° 37' 24" W.
257.14'

S. 87° 37' 24" W.
257.14'

S. 87° 37' 24" W.
257.14'

S. 87° 37' 24" W.
257.14'

S. 87° 37' 24" W.
257.14'

S. 87° 37' 24" W.
257.14'

S. 87° 37' 24" W.
257.14'

S. 87° 37' 24" W.
257.14'

382.06'

380.00'

200.00'

29.00'

257.14'

257.14'

257.14'

257.14'

257.14'

257.14'

LOT LINE

CASS TWP.

410.00'

JEFFERSON TWP.

330.73'

N. 87° 11' 42" W.
133.62'

N. 87° 11' 42" W.
154.38'

N. 87° 11' 42" W.
121.17'

N. 87° 11' 42" W.
118.18'

S. 10° 10' 35" W.
740.13'