

227 MAIN ST

LEGEND

- ⊙ Bolt Found
- Iron Pin Found
- ⊗ Axle Found
- ① Lot Number

— Breakline

SITUATED IN

The Village of Roseville, County of Muskingum, State of Ohio, being a part of Lot 1, Beem's Addition to Roseville.

BASIS OF BEARINGS

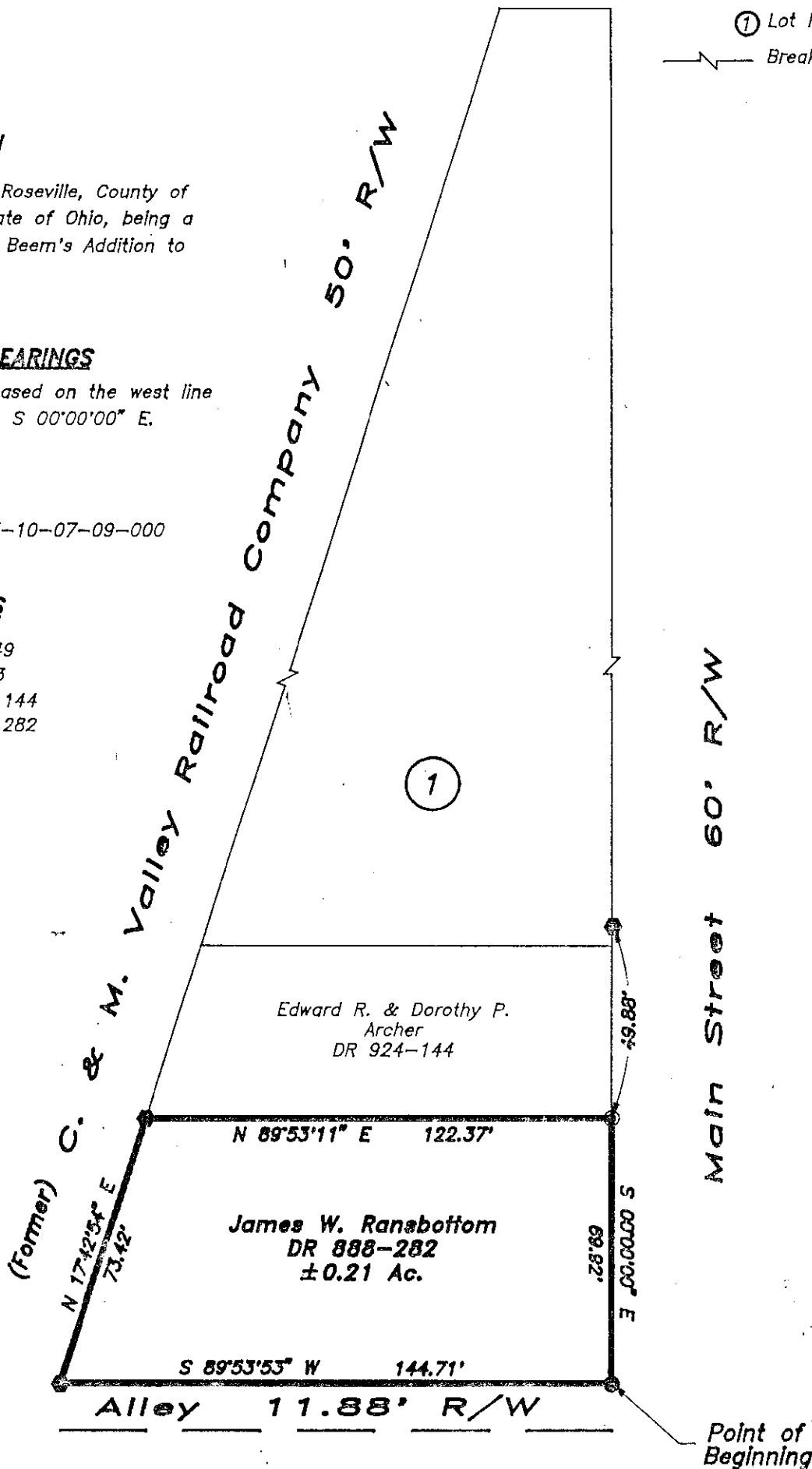
Bearings are based on the west line of Main Street, S 00°00'00" E.

PARCEL NO.

All of: 14-13-10-07-09-000

REFERENCES

P.B. 1, Pg. 249
 Replat Pg. 273
 D.R. 924, Pg. 144
 D.R. 888, Pg. 282



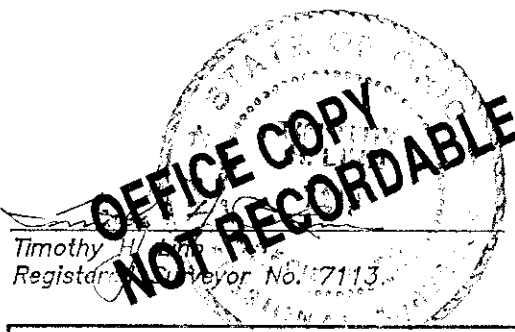
DESCRIPTION APPROVED
 FOR AUDITORS TRANSFER

BY A. L. Smith
 12-22-93

GRAPHIC SCALE



(IN FEET)
 1 inch = 40 ft.



Linn Engineering, Inc.
 Civil Engineering Consultants

614-452-7434

P.O. Box 6017 Zanesville, Ohio 43702-0017