

Cambridge Road
Coshocton, Ohio 43812



LANDMARK SURVEY
EARL R. DONAKA, JR.

MARGARET M. GOINS

(614) 623-0993

1-800-842-3264

118.362 Acres

Being 118.362 acres, more or less, all of parcel 13-40-11-08, in the southwest quarter of section 11, in the first quarter, of township 14 north, range 14 west, Congress Lands, in the township of Clay, in the county of Muskingum, in the State of Ohio, and more particularly described as follows:

Beginning at a 5/8" steel pin set at the southeast corner of the southwest quarter of section 11, said 5/8" steel pin set being the TRUE POINT OF BEGINNING;

thence, with the section line, N.83°49'36"W. 2087.44' to a point;

thence, with the property line of Kimberly S. Goins, 1037/16, the following 6 courses:

1. thence, N.24°20'00"E. 5.35' to a 5/8" rebar found;
2. thence, continuing N.24°20'00"E. 187.25' to a 5/8" rebar found;
3. thence, N.64°50'18"W. 53.68' to a 5/8" rebar found;
4. thence, S.84°26'10"W. 249.65' to a 5/8" rebar found;
5. thence, N.72°20'17"W. 130.75' to a 5/8" rebar found;
6. thence, continuing N.72°20'17"W. 35.14' to a point in East Athens Road, CR 87;

thence, with the property line of Ronald E. & Mildred K. Hall, 950/57, and with East Athens Road, CR 87, N.48°06'41"W. 77.03' to a point on the section line, said point being N.06°19'00"E. 227.70' from the southwest corner of section 11;

thence, with the section line the following 2 courses:

1. thence, N.06°19'00"E. 52.30' to a 5/8" steel pin set;
2. thence, continuing N.06°19'00"E. 781.89' to a 5/8" steel pin set;

thence, with the property line of Harry M. Runkle, et. al., 553/943, the following 3 courses:

1. thence, S.55°13'01"E. 1408.96' to a 5/8" steel pin set;
2. thence, N.36°05'00"E. 624.40' to a 5/8" steel pin set;
3. thence, N.63°00'00"W. 1655.30' to a 5/8" steel pin set;

thence, with the section line the following 3 courses:

1. thence, N.06°19'00"E. 320.69' to a stone found;
2. thence, continuing N.06°19'00"E. 535.83' to a 5/8" steel pin set;
3. thence, continuing N.06°19'00"E. 31.00' to a point in Rider Road, TR 132, said point being S.06°19'00"W. 226.38' from the northwest corner of the southwest quarter of section 11;

thence, with the property line of Oxford Oil Company, 942/228, and with Rider Road, TR 132, N.77°24'00"E. 706.63' to a point on the east & west quarterline;

continued

727 Cambridge Road
Coshocton, Ohio 43812

LANDMARK SURVEYS

EARL R. DONAKER, P.S.

(614) 623-0993
1-800-842-3264

continued

thence, with the east & west quarterline the following 3 courses:

1. thence, S.83°54'55"E. 58.37' to a P.K. nail set in the edge of the pavement;
2. thence, continuing S.83°54'55"E. 100.00' to a 5/8" steel pin set;
3. thence, continuing S.83°54'55"E. 1268.54' to a 5/8" steel pin set;

thence, with the property line of Mary A. Evans, 623/124, the following 2 courses:

1. thence, S.07°15'55"W. 1320.00' to a stone found;
2. thence, S.83°28'47"E. 496.68' to a stone found;

thence, with the north & south quarterline, S.07°16'28"W. 1311.59' to the TRUE POINT OF BEGINNING, containing 118.362 acres, more or less, including public road right-of-way and is subject to all easements, rights-of-way, or restrictions, whether recorded or implied.

Bearings are based on Deed Book 553, page 943, N.06°19'00"E. and are for angular calculations only. All 5/8" steel pins set are 30" long.

Pertinent documents: tax maps: 13-40, 13-60; deeds: 1043/537, 942/228, 756/276, 623/124, 643/153, 1037/15, 950/57, 737/52, 553/943, 352/470, 612/263, 534/302; surveys by: R.L. Daniels.

Prior deed: 1043/537.

Description and plat by Landmark Surveys, Earl R. Donaker, Professional Surveyor, #7142, from a survey of the premises in the month of July, in the year of our Lord one thousand nine hundred and ninety-two.

OFFICE COPY
NOT RECORDABLE

DESCRIPTION APPROVED
FOR AUDITOR'S TRANSFER

BY J. L. Hamble
7-09-92

THIS PROPERTY IS SUBJECT TO
ALL EASEMENTS, RIGHTS-OF-WAY,
OR RESTRICTIONS, WHETHER
RECORDED OR IMPLIED.

727 Cambridge Road
Coshocton, Ohio 43812

LANDMARK SURVEYS

EARL R. DONAKER, P. S.

tel: (614) 623-0993
1-800-842-3264



SCALE: 1"=400'
ORIGINAL PLAT 11X17

PERTINENT DOCUMENTS

TAX MAPS: 13-40, 13-60

DEEDS: 1043/537, 942/228, 756/276
623/124, 643/153, 1037/15,
950/57, 737/52, 553/943,
352/470, 612/263, 534/302

SURVEYS BY: R.L. DANIELS

BEARINGS ARE BASED ON DEED
BOOK 553, PAGE 943 AND
ARE FOR ANGULAR
CALCULATIONS ONLY

○ = ALL 5/8" STEEL PINS SET
ARE 30" LONG WITH PLASTIC
CAPS MARKED "E.R.D. 7142"

● = 5/8" REBAR FOUND

□ = STONE FOUND

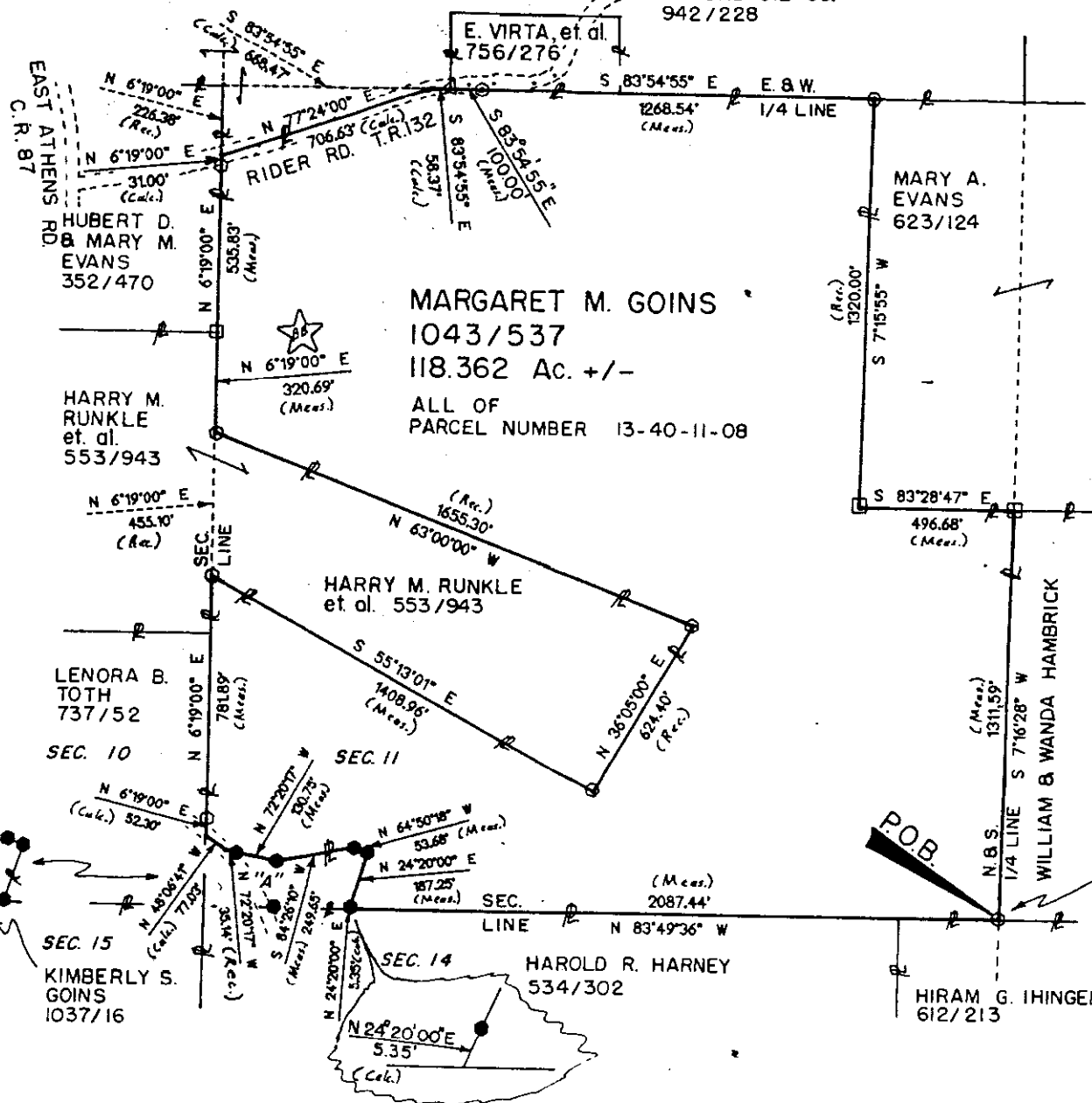
△ = P.K. NAIL SET

DESCRIPTION APPROVED
FOR AUDITOR'S TRANSFER

BY J. L. Hamble
7-09-92

S.E. COR
S.W. 1/4
SEC. 11

MARGARET M. GOINS 1043/537
118.362 AC. +/-, PAR 13-40-11-08
S.W. 1/4, SEC. 11
1 ST. QUARTER, T 14 N, R 14 W.
CONGRESS LANDS
TOWNSHIP: CLAY
COUNTY: MUSKINGUM, OHIO
DATE: JULY 1992



OFFICE COPY

NOT RECORDED
I, EARL R. DONAKER, P.S., hereby
certify that this is a true and correct
survey pursuant to Chapter 4733-37, Ohio
Administrative Code and to be correct to
the best of my knowledge and belief.

Remove not the old landmark. Proverbs 23:10