

Part of Sara K. Swingle, Trust 16.188 Ac.
All of Parcel No. 13-50-01-04-000
Part of Parcel No. 13-50-01-19-000
Part of Parcel No. 13-50-01-20-000

Situated in the State of Ohio, County of Muskingum, Township of Clay:

Being a Part of the Northeast, the Southeast and the Southwest Quarters of Section One (1), Township Fourteen (14), Range Fourteen 14 of the Congress Lands East of the Scioto River and Part of the property Recorded in the Sara K. Swingle Trust and Recorded in deed Book 1133, Page 373 of the Muskingum County Deed Records bounded and described as follows:

Beginning at a stone found at the center of said Section 1; thence N 4° 23' 00" E (the base of bearings for this description is State Plane Grid from a Solar Observation) along the east line of property owned by Wilma Fisher (Vol. 1121, Pg. 231) 278.15 feet to a point in the center of a small stream, said point bears S 45° 37' 04" W 11.21 feet from an iron pin set; thence along the center of said stream and the southline of said Wilma Fisher property the following seven courses and distances:

1 - S 58° 04' 57" E 97.82 feet to a point

2 - S 78° 28' 09" E 89.84 feet to a point

3 - S 54° 57' 45" E 90.52 feet to a point

4 - S 64° 43' 26" E 69.61 feet to a point

5 - S 78° 33' 13" E 108.70 feet to a point, said point bears S 43° 58' 34" W 26.04 feet from an iron pin set

6 - S 77° 03' 05" E 217.83 feet to a point

7 - S 66° 58' 29" E 255.54 feet to a point on the south line of the northeast quarter of said section 1; thence S 87° 07' 29" E along said half section line 134.91 feet to a point in the center of Cannelville Road and passing through an iron pin set at 76.41 feet; thence following the center of said road and through the land of said Sara K. Seingle Trust the following 19 courses and distances;

1 - S 55° 39' 54" W 53.24 feet to a point

2 - S 46° 26' 27" W 429.23 feet to a point

3 - S 50° 07' 25" W 50.77 feet to a point



4 - S 56° 30' 07" W 50.83 feet to a point

5 - S 63° 12' 45" W 51.88 feet to a point, said point bears N 62° 03' 19" W 29.52 feet from an iron pin set

6 - S 71° 00' 55" W 52.15 feet to a point

7 - S 77° 46' 30" W 110.22 feet to a point

8 - S 77° 04' 03" W 73.73 feet to a point

9 - S 67° 18' 31" W 115.02 feet to a point

10 - S 68° 41' 45" W 70.21 feet to a point

11 - S 76° 14' 10" W 54.16 feet to a point which bears N 23° 04' 46" W 21.34 feet from an iron pin set

12 - S 86° 03' 27" W 49.91 feet to a point

13 - N 86° 57' 43" W 48.91 feet to a point

14 - N 84° 45' 15" W 76.17 feet to a point and passing from the southeast quarter of section 1 into the southwest quarter at 17.33 feet

15 - N 83° 06' 31" W 50.94 feet to a point

16 - N 81° 19' 58" W 51.00 feet to a point

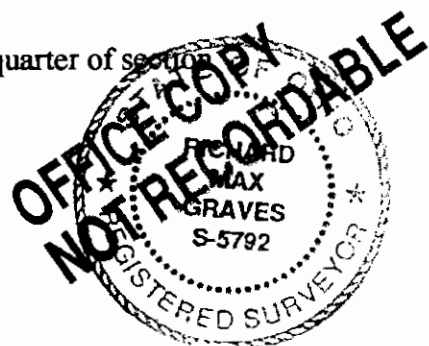
17 - N 79° 31' 25" W 53.50 feet to a point

18 - N 77° 55' 37" W 56.69 feet to a point

19 - N 75° 52' 02" W 53.58 feet to an iron pin found; thence N 3° 08' 49" E along the east line of property owned by Homer and Donna Green (Vol. 1053, Pg. 92) 563.18 feet to an iron pin found on the north line of said southwest quarter of section 1 and passing through an iron pin set at 28.67 feet; thence S 87° 05' 04" E along the north line of said southwest quarter and the south line; of the aforementioned Wilma Fisher (Vol. 1121, Pg. 231) a distance of 322.57 feet to the place of beginning containing Sixteen and One-hundred-eighty-eight-thousandths (16.188) acres

All of Auditors Parcel No. 13-50-01-04-000 in the northeast quarter of section one 2.649 Ac.

Part of Auditors Parcel No. 13-50-01-20-000 in the southeast quarter of section one 9.196 Ac.



Part of Auditors Parcel No. 13-50-01-19-000 in the southwest quarter of section one 4.343 Ac.

Subject to all legal right-of-ways and easements on record.

All iron pins set are 5/8" x 60" rebar capped. Graves No. 5792.

This description was written August 14, 2003 from a Field Survey made by Richard Max Graves, Registered Surveyor, No. 5792.

DESCRIPTION APPROVED
FOR ADDITIONAL TRANSFER
BY MSB

8-19-2003

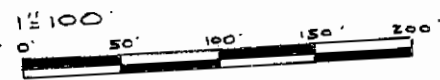
BASE OF BEARINGS IS STATE PLANE
GRID FROM A SOLAR OBSERVATION

□ STONE FOUND

○ 5/8" X 30" REBAR SET CAPPED GRAVES #5792

⊗ I.P. FOUND WITH ALUMINUM ID CAP
C.R. HARKNESS #6885

● I.P. FOUND R.L. DANIELS #5410



WILMA FISHER
VOL. 1121, Pg. 231
48.48 AC.

ALL PARCEL 13-50-01-04-000
2.649 AC.

REFERENCE LIST
VOL. 1133, Pg. 373

C.R. HARKNESS SURVEY
#6885
R.L. DANIELS SURVEY
#5410

CLAY TWP. TAX MAP
#13-01

ARIEL 1"=400'

USGS CROOKSVILLE QUAD.

STONE
CENTER OF
SECTION 1

PART OF PARCEL NO. 13-50-01-20-000
9.196 AC.

SARA K. SWINGLE, Trust
VOL. 1133, Pg. 373
16.188 AC.

DESCRIPTION APPROVED
FOR AUDITOR'S TRANSFER
BY *[Signature]*
8-19-2003

PART OF PARCEL NO.
13-50-01-19-000
4.343 AC.

HOMER &
DONNA
GREEN
VOL. 1053, Pg. 92

N.3°08'49"E
205.00'

N.75°52'02"W
53.58'

N.77°55'37"N
56.69'

N.79°31'25"W
53.50'

N.81°19'58"W
51.00'

N.83°06'31"W
50.94'

N.84°45'15"W
76.17'

N.86°57'43"W
48.91'

N.88°03'27"W
49.91'

N.89°04'46"W
54.16'

N.90°14'10"W
54.16'

N.91°18'31"W
56.41'

N.92°18'31"W
56.41'

N.93°18'31"W
56.41'

N.94°18'31"W
56.41'

N.95°18'31"W
56.41'

N.96°18'31"W
56.41'

SARA K. SWINGLE,
VOL. 1133, Pg. 373

CANNELVILLE
ROAD

N.77°46'30"
110.22'

N.77°04'03"W
73.73'

N.76°18'31"W
115.02'

N.75°14'10"W
54.16'

N.74°14'10"W
54.16'

N.73°14'10"W
54.16'

N.72°14'10"W
54.16'

N.71°14'10"W
54.16'

N.70°14'10"W
54.16'

N.69°14'10"W
54.16'

N.68°14'10"W
54.16'

N.67°14'10"W
54.16'

N.66°14'10"W
54.16'

N.65°14'10"W
54.16'

N.64°14'10"W
54.16'

N.63°14'10"W
54.16'

N.62°14'10"W
54.16'

N.61°14'10"W
54.16'

N.60°14'10"W
54.16'

N.59°14'10"W
54.16'

N.58°14'10"W
54.16'

N.57°14'10"W
54.16'

N.56°14'10"W
54.16'

N.55°14'10"W
54.16'

N.54°14'10"W
54.16'

N.53°14'10"W
54.16'

N.52°14'10"W
54.16'

N.51°14'10"W
54.16'

N.50°14'10"W
54.16'

N.49°14'10"W
54.16'

N.48°14'10"W
54.16'

N.47°14'10"W
54.16'

N.46°14'10"W
54.16'

N.45°14'10"W
54.16'

N.44°14'10"W
54.16'

N.43°14'10"W
54.16'

N.42°14'10"W
54.16'

N.41°14'10"W
54.16'

N.40°14'10"W
54.16'

N.39°14'10"W
54.16'

N.38°14'10"W
54.16'

N.37°14'10"W
54.16'

N.36°14'10"W
54.16'

N.35°14'10"W
54.16'

N.34°14'10"W
54.16'

N.33°14'10"W
54.16'

N.32°14'10"W
54.16'

N.31°14'10"W
54.16'

N.30°14'10"W
54.16'

N.29°14'10"W
54.16'

N.28°14'10"W
54.16'

N.27°14'10"W
54.16'

N.26°14'10"W
54.16'

N.25°14'10"W
54.16'

N.24°14'10"W
54.16'

N.23°14'10"W
54.16'

N.22°14'10"W
54.16'

N.21°14'10"W
54.16'

N.20°14'10"W
54.16'

N.19°14'10"W
54.16'

N.18°14'10"W
54.16'

N.17°14'10"W
54.16'

N.16°14'10"W
54.16'

N.15°14'10"W
54.16'

N.14°14'10"W
54.16'

N.13°14'10"W
54.16'

N.12°14'10"W
54.16'

N.11°14'10"W
54.16'

N.10°14'10"W
54.16'

N.9°14'10"W
54.16'

N.8°14'10"W
54.16'

N.7°14'10"W
54.16'

N.6°14'10"W
54.16'

N.5°14'10"W
54.16'

N.4°14'10"W
54.16'

N.3°14'10"W
54.16'

N.2°14'10"W
54.16'

N.1°14'10"W
54.16'

N.0°14'10"W
54.16'

N.359°14'10"W
54.16'

N.358°14'10"W
54.16'

N.357°14'10"W
54.16'

N.356°14'10"W
54.16'

N.355°14'10"W
54.16'

N.354°14'10"W
54.16'

N.353°14'10"W
54.16'

N.352°14'10"W
54.16'

N.351°14'10"W
54.16'

N.350°14'10"W
54.16'

N.349°14'10"W
54.16'

N.348°14'10"W
54.16'

N.347°14'10"W
54.16'

N.346°14'10"W
54.16'

N.345°14'10"W
54.16'

N.344°14'10"W
54.16'

N.343°14'10"W
54.16'

N.342°14'10"W
54.16'

N.341°14'10"W
54.16'

N.340°14'10"W
54.16'

N.339°14'10"W
54.16'

N.338°14'10"W
54.16'

N.337°14'10"W
54.16'

N.336°14'10"W
54.16'

N.335°14'10"W
54.16'

N.334°14'10"W
54.16'

N.333°14'10"W
54.16'

N.332°14'10"W
54.16'

N.331°14'10"W
54.16'

N.330°14'10"W
54.16'

N.329°14'10"W
54.16'

N.328°14'10"W
54.16'

N.327°14'10"W
54.16'

N.326°14'10"W
54.16'

N.325°14'10"W
54.16'

N.324°14'10"W
54.16'

N.323°14'10"W
54.16'

N.322°14'10"W
54.16'

N.321°14'10"W
54.16'

N.320°14'10"W
54.16'

N.319°14'10"W
54.16'

N.318°14'10"W
54.16'

N.317°14'10"W
54.16'

N.316°14'10"W
54.16'

N.315°14'10"W
54.16'

N.314°14'10"W
54.16'

N.313°14'10"W
54.16'

N.312°14'10"W
54.16'

N.311°14'10"W
54.16'

N.310°14'10"W
54.16'

N.309°14'10"W
54.16'

N.308°14'10"W
54.16'

N.307°14'10"W
54.16'

N.306°14'10"W
54.16'

N.305°14'10"W
54.16'

N.304°14'10"W
54.16'

N.303°14'10"W
54.16'

N.302°14'10"W
54.16'

N.301°14'10"W
54.16'

N.300°14'10"W
54.16'

N.299°14'10"W
54.16'

N.298°14'10"W
54.16'

N.297°14'10"W
54.16'

N.296°14'10"W
54.16'

N.295°14'10"W
54.16'

N.294°14'10"W
54.16'

N.293°14'10"W
54.16'

N.292°14'10"W
54.16'

N.291°14'10"W
54.16'

N.290°14'10"W
54.16'

N.289°14'10"W
54.16'

N.288°14'10"W
54.16'

N.287°14'10"W
54.16'

N.286°14'10"W
54.16'

N.285°14'10"W
54.16'

N.284°14'10"W
54.16'

N.283°14'10"W
54.16'

N.282°14'10"W
54.16'

N.281°14'10"W
54.16'

N.280°14'10"W
54.16'

N.279°14'10"W
54.16'

N.278°14'10"W
54.16'

N.277°14'10"W
54.16'

N.276°14'10"W
54.16'

N.275°14'10"W
54.16'

N.274°14'10"W
54.16'

N.273°14'10"W
54.16'

N.272°14'10"W
54.16'

N.271°14'10"W
54.16'

N.270°14'10"W
54.16'

N.269°14'10"W
54.16'

N.268°14'10"W
54.16'

N.267°14'10"W
54.16'

N.266°14'10"W
54.16'

N.265°14'10"W
54.16'

N.264°14'10"W
54.16'

N.263°14'10"W
54.16'

N.262°14'10"W
54.16'

N.261°14'10"W
54.16'

N.260°14'10"W
54.16'

N.259°14'10"W
54.16'

N.258°14'10"W
54.16'

N.257°14'10"W
54.16'

N.256°14'10"W
54.16'

N.255°14'10"W
54.16'

N.254°14'10"W
54.16'

N.253°14'10"W
54.16'

N.252°14'10"W
54.16'

N.251°14'10"W
54.16'